



# Chapman Lake

## Trust Land Transfer to Department of Fish and Wildlife

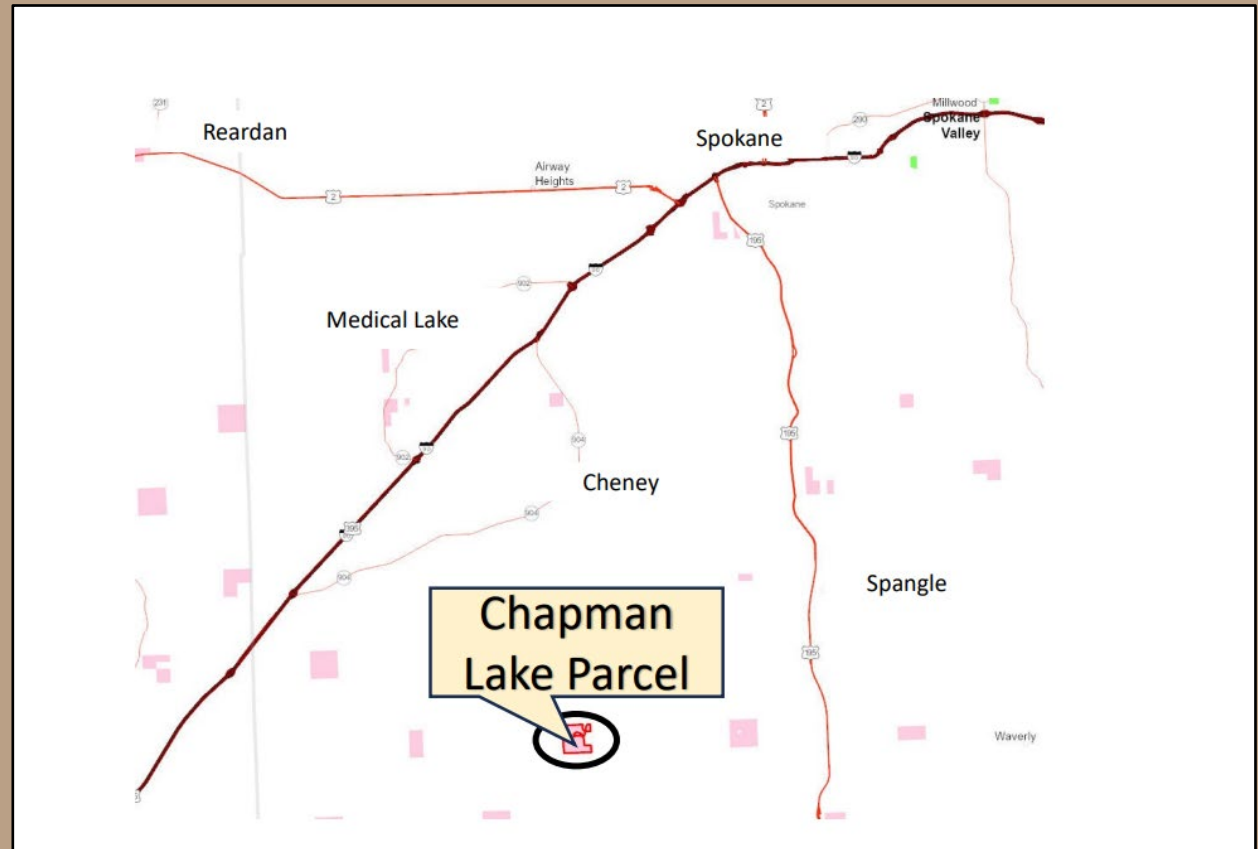
**Location: Spokane County**



# Chapman Lake

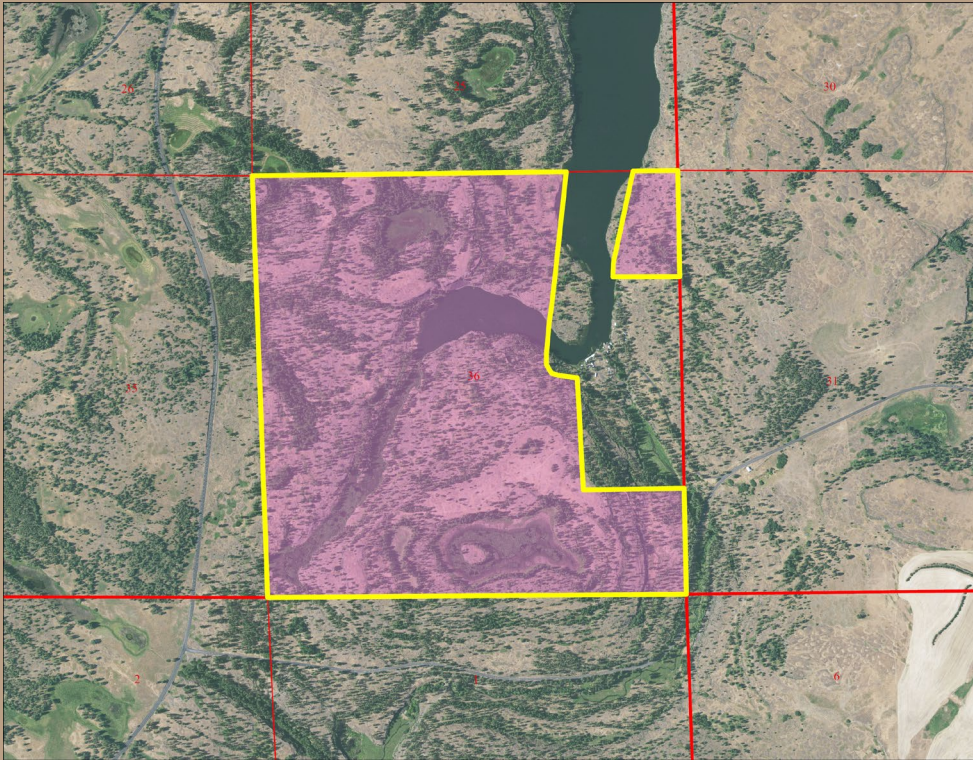
## Vicinity Map

- Approx. 12 miles southwest of Spokane
- 530.35 acres
- South of Turnbull National Wildlife Refuge



# Chapman Lake

## Parcel Information

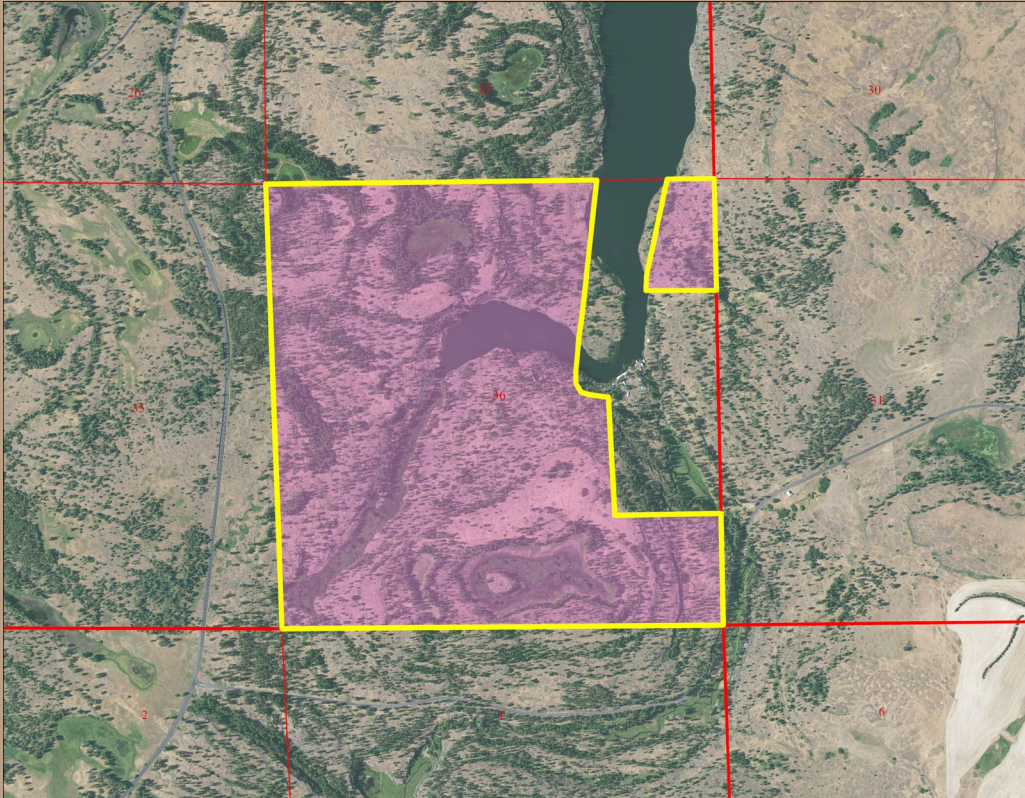


- 530.35 acres
- Zoned RCV, Rural Conservation; 1DU/20 acres
- No building improvements
- Common School Trust



# Chapman Lake

## Overview



- High ecological value
- Economically underperforming
- Public benefit for recreation and access to Chapman lake.
- Lease has been \$506/year for grazing

# Chapman Lake

## Valuation

Appraisal	Acreage	Appraised Value
Fee Interest	530.35	\$1,450,000



# Chapman Lake

## Benefits

- Divests of a property with little opportunity for increased trust revenue production.
- Transfers the property to WDFW, which is an agency suited to manage, monitor, and protect the present ecological values.
- Proceeds will be used to purchase replacement land better suited for revenue production for the Common School Trust.

# Chapman Lake

## Resolution

Questions ?

Resolution No. 1623





