

Teanaway Community Forest Summer Recreation



Summer Recreation Concept Mapping

- 10-15 year vision
- Community Forest
- Dual use with winter recreation
- Balance goals of Teanaway Community Forest
- Map, list and describe concepts
- **Be Creative**



Teaway Community Forest Evergreen MTBA Survey Results

Total Responses: 244

- Date Created: Friday, May 12, 2017
- Date Closed: Tuesday, June 6, 2017



Sponsor and lead field trips
for the
Kittitas Environmental
Education Network

Hunting



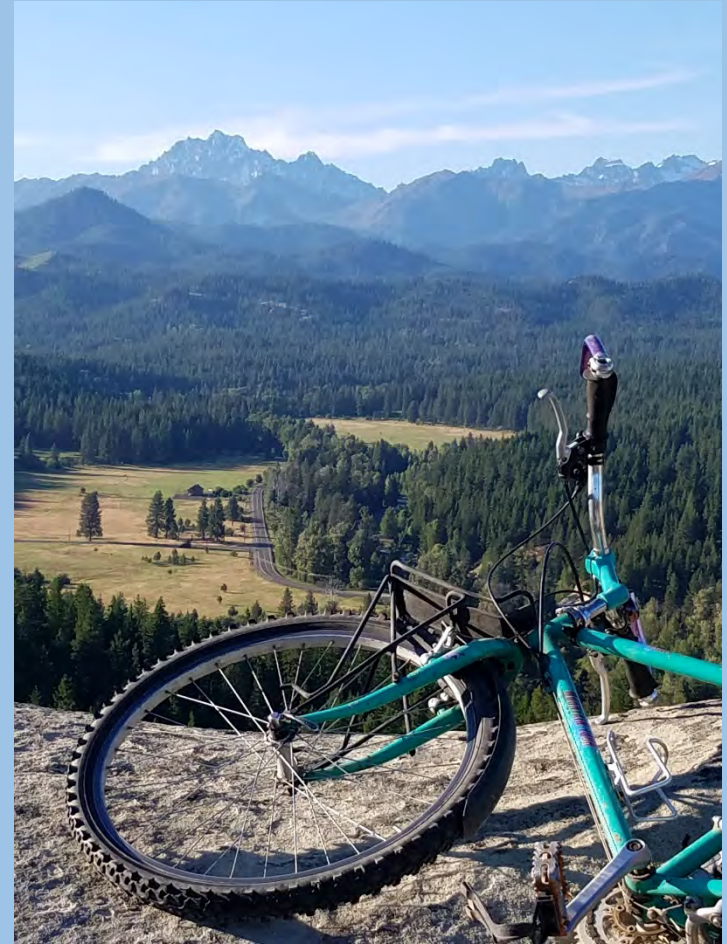
Birding

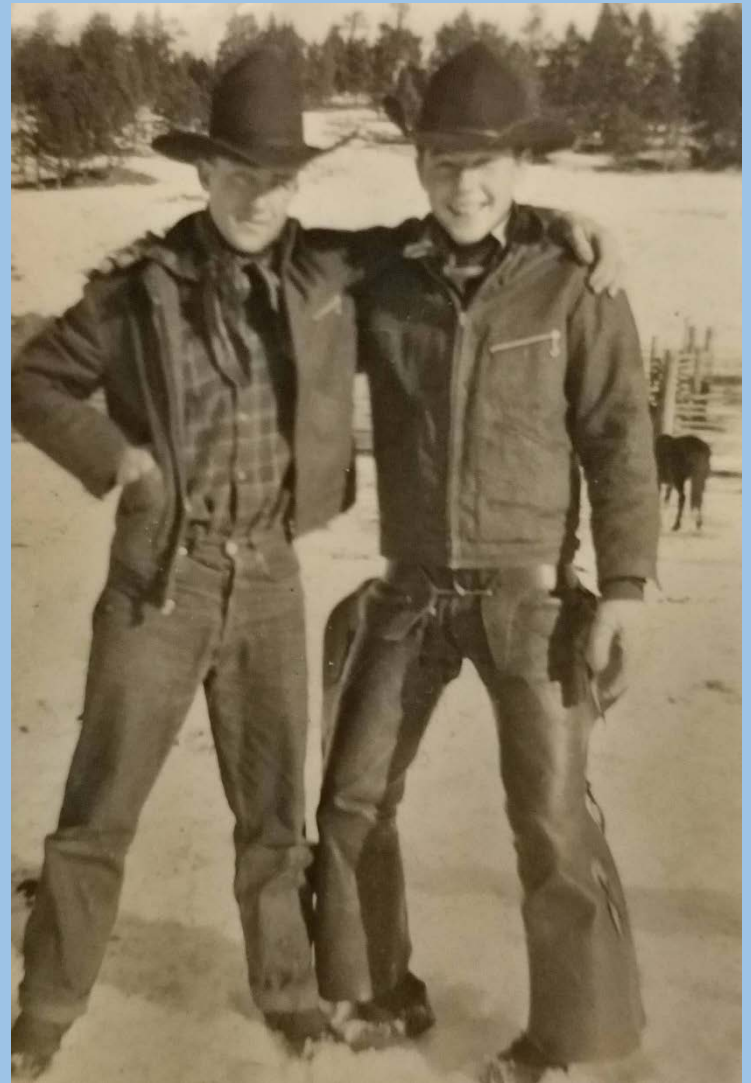




Recreation Planning Concerns:

- 59% FOREST FIRE
- 31% ORV,
- 27% Disbursed Camping
- 13% TRESSPASS
- 9% Large Groups
- 4% Open Range, Wolves, Crime, H2O Rights







BACKCOUNTRY WILDERNESS AREA TRAILHEAD

Welcome to the Backcountry Wilderness Area and the Douglas County Regional East/West Trail

This trail leads to your starting point, on foot, bike, or horse - for destinations near and far.

This section of the Douglas County East-West Trail leads you to **Crane Ridge Park**. In the future this trail will connect with the East-West Trailhead at **Crane Ridge** and to the **Bull's Head** Trail Park.

Once on the trail you will find the **Wildcat Mountain Trail System** where you can explore 31 miles of the Backcountry Wilderness Area. The Backcountry is an unspoiled wild area rich with native plants and animals. Native grasslands and shrubs make up the majority of the ecosystem which contains elk, deer, porcupine, bobcat and many other species of wildlife.

The Wildcat Mountain Trail System has unique regulations in order to protect the abundant wild land resources reserved for the property. Dogs will not be permitted on the trails and they will be seasonal closures. For more information please go to www.backcountry.org

HIGHLANDS RANCH COMMUNITY ASSOCIATION | **DOUGLAS COUNTY**

TRAILMAPS BY COMPUTER TERRAIN MAPPING

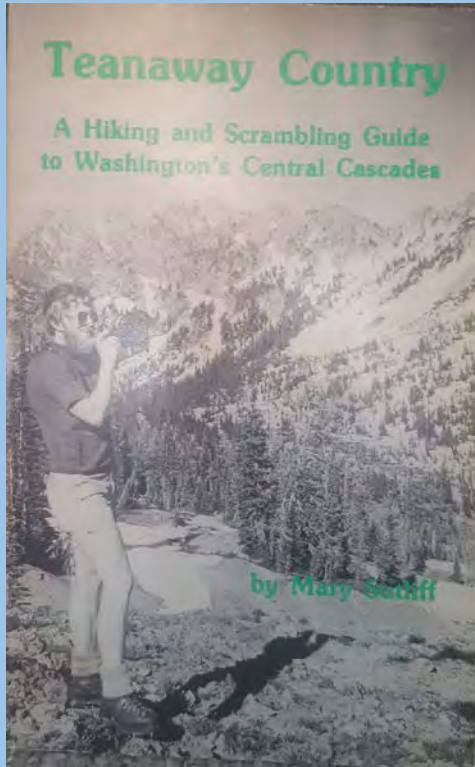


HIGHLANDS RANCH COMMUNITY ASSOCIATION/ COLORADO LOGO, COLOR PALETTE, INTERPRETIVE AND TRAIL SIGNAGE PROGRAM



ll Taylor's camp on Lick Creek. 1927. (Photograph courtesy of the Ellensburg Public Library.)

History of Hiking in Teanaway



- Long history of people hiking in the Teanaway Basin
- *Teanaway Country* was published in 1980 by *Signpost Books*
- Trails highlighted in the book include:
 - Yellow Hill
 - Middle Fork Teanaway
 - West Fork Teanaway
- “Those living in western Washington have easy access to the Cascades, but often mountains on the western slopes are damp and wet and people then yearn for sun and dryness. I found myself frequently traveling over Snoqualmie Pass to the mountains east of the Cascade crest.”
- “While the hiker is seldom more than a day’s hike from the road, the sense of being in wilderness is strong.”

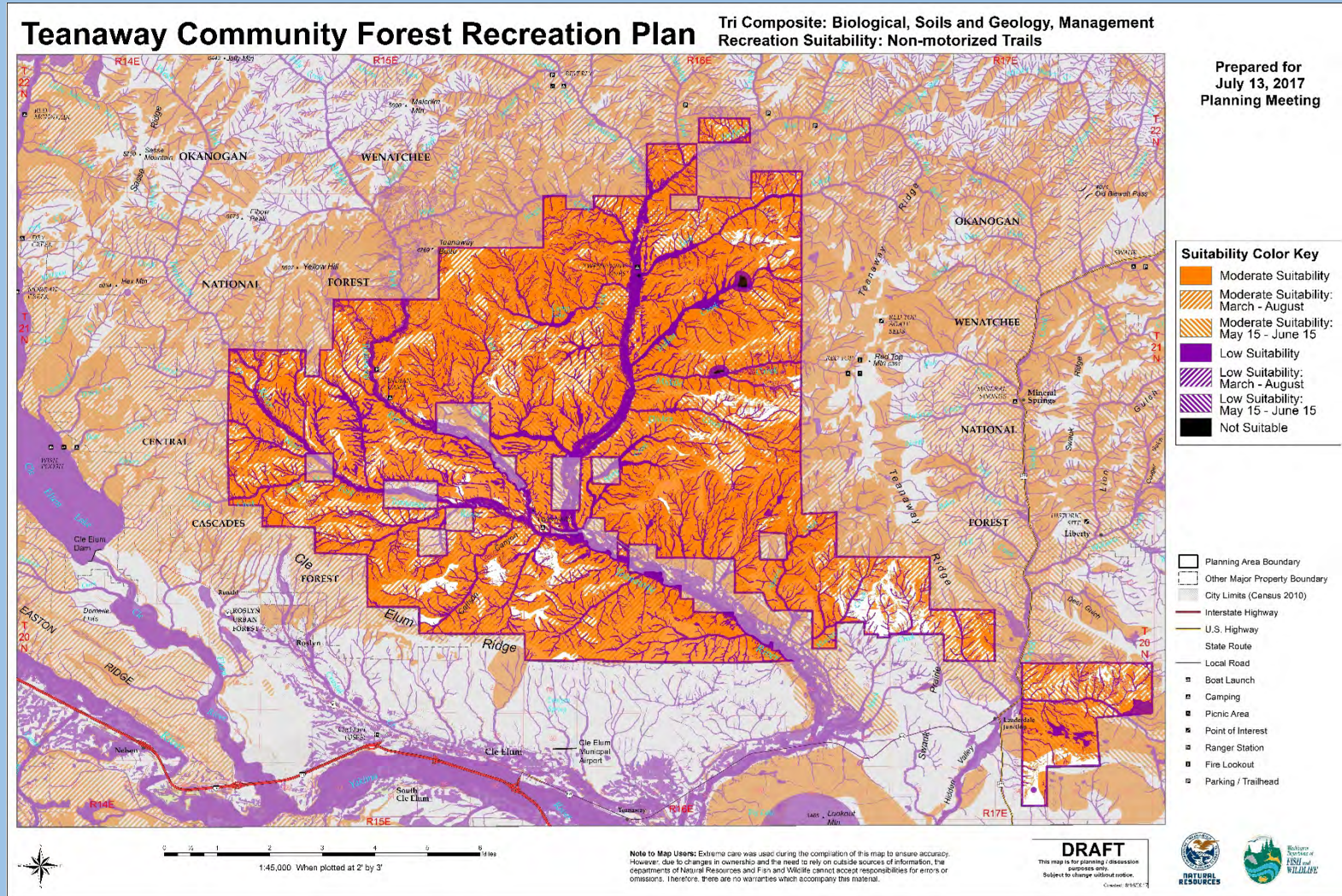
TEANAWAY COMMUNITY FOREST RECREATION PLAN

Tri-Composite Criteria

Biological	Soils and Geology	Management
Wetlands & Wetlands Buffers 120'	Soils Risk for Recreation (Erosion)	Communication and Management Sites
Riparian: streams, open water, buffers Fish 120', Non-fish 50', Unknown 25'	Areas with High Potential for Landslides/Unstable Slopes	Rock Sources (existing and future)
Salmonids and Fish Habitat Informational Only **	Slope Percentage	Utility Easements
Deer & Elk Winter Range	100 - Year Flood Plains	Land Adjacent to Other Properties
Deer & Elk Calving/fawning range May 15 - June 15 Buffer 300 meters	Poorly Drained Soils	Wells and Water Sources
Sensitive, Threatened & Endangered Species (plants & animals)**	Areas with High Potential for Avalanche (Cabin Creek)	Riparian Restoration Areas
High Quality or Rare Plant Communities	Areas that have Moved in Previous Landslides	Cultural and Archeological Resources
Northern Spotted Owl / Northern Goshawk (March - August)		
Large Carnivores - Gray Wolf ** March 15 - June 15		** Items Not Shown on Map

TEANAWAY COMMUNITY FOREST RECREATION PLAN

Non motorized Trails



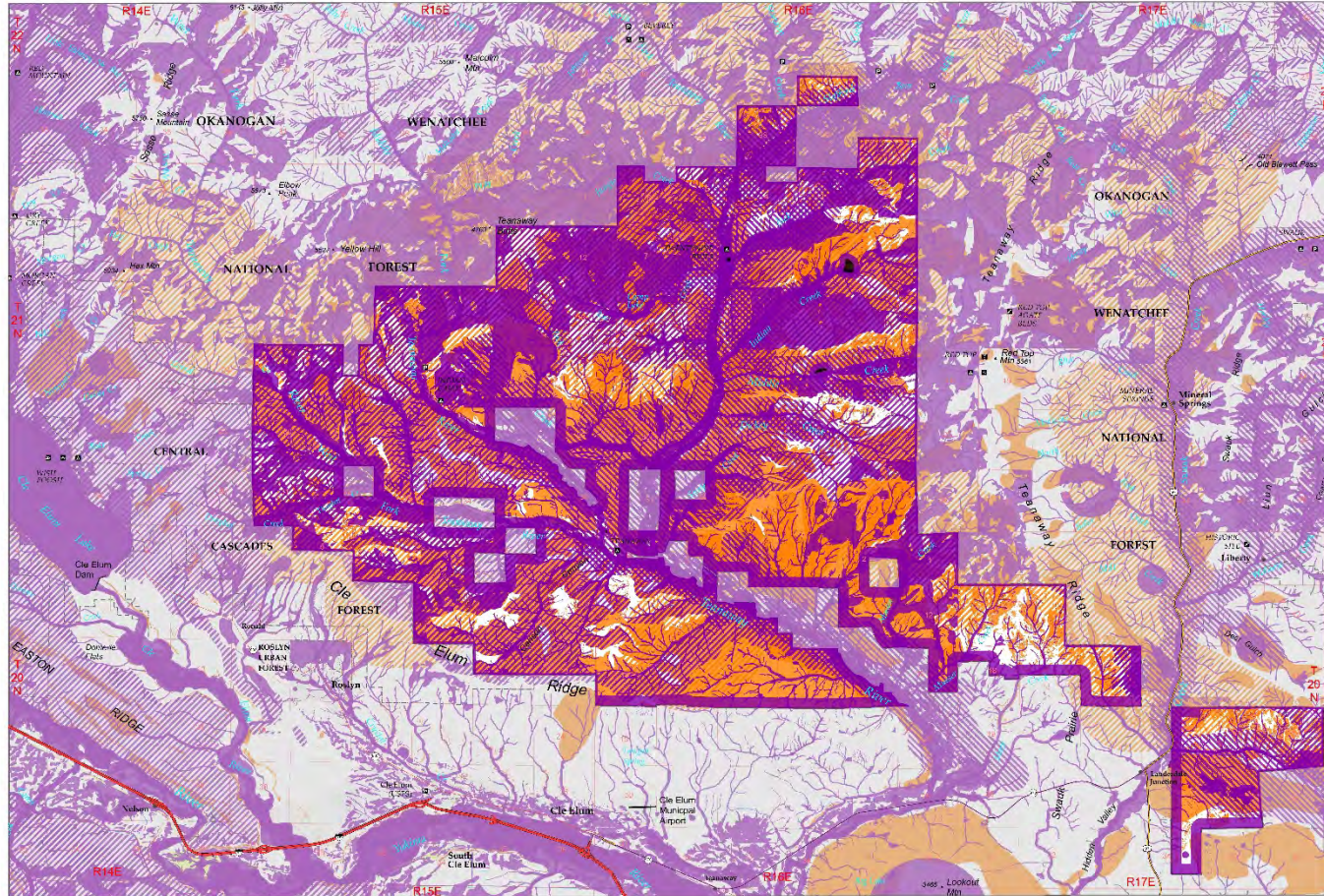
TEANAWAY COMMUNITY FOREST RECREATION PLAN

Motorized Trails

Teanaway Community Forest Recreation Plan

Tri Composite: Biological, Soils and Geology, Management
Recreation Suitability: Motorized Trails

Prepared for
July 13, 2017
Planning Meeting



Suitability Color Key

- Moderate Suitability
- Moderate Suitability: March - August
- Moderate Suitability: May 15 - June 15
- Low Suitability
- Low Suitability: March - August
- Low Suitability: May 15 - June 15
- Not Suitable

- Planning Area Boundary
- Other Major Property Boundary
- City Limits (Census 2010)
- Interstate Highway
- U.S. Highway
- State Route
- Local Road
- Boat Launch
- Camping
- Picnic Area
- Point of Interest
- Ranger Station
- Fire Lookout
- Parking / Trailhead



0 1 2 3 4 5 6 Miles
1:45,000 When plotted at 2' by 3'

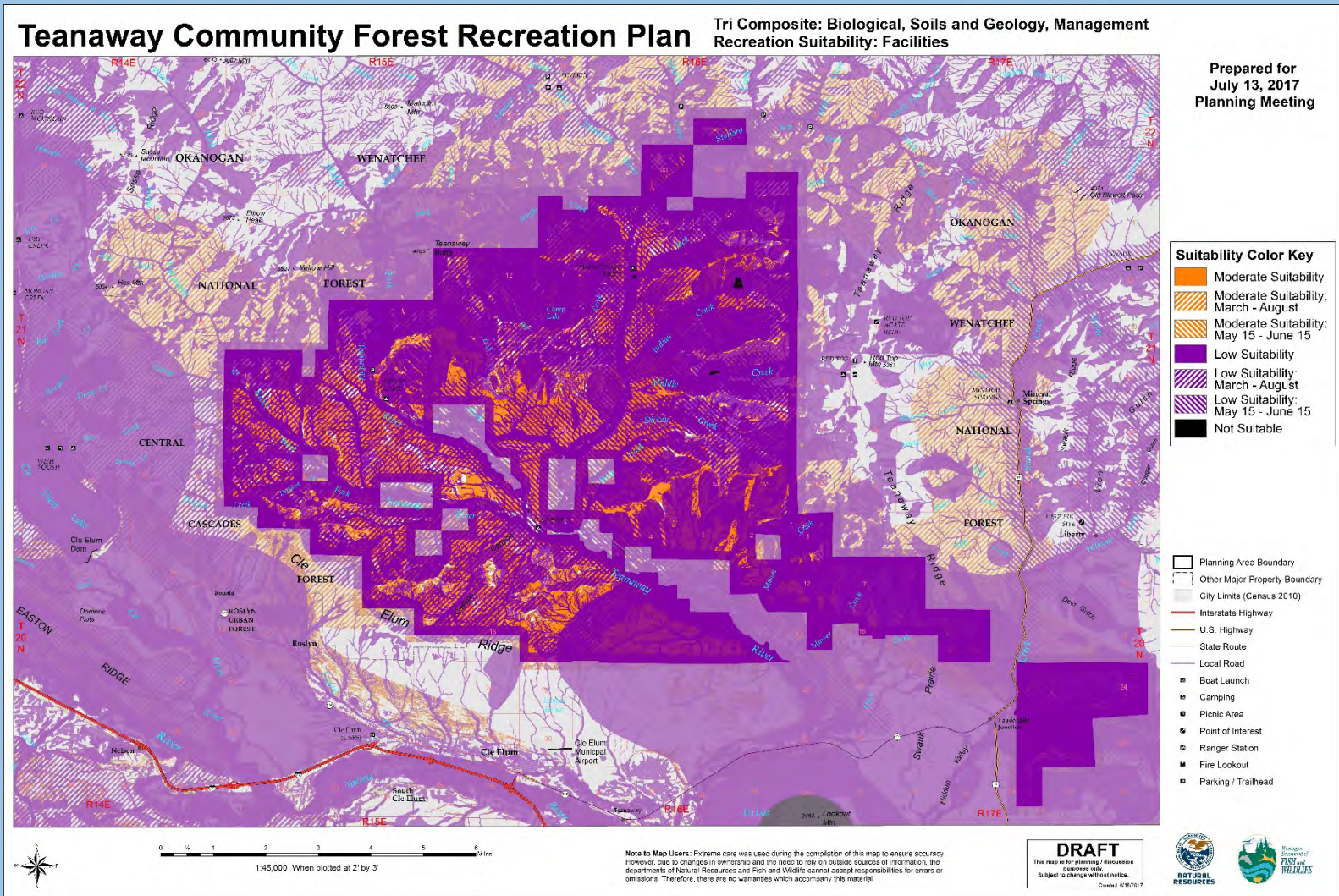
Note to Map Users: Extreme care was used during the completion of this map to ensure accuracy. However, due to changes in ownership and the need to rely on outside sources of information, the departments of Natural Resources and Fish and Wildlife cannot accept responsibility for errors or omissions. Therefore, there are no warranties which accompany this material.

DRAFT
This map is for planning discussion purposes only. Subject to change without notice.
© 2017 WSR



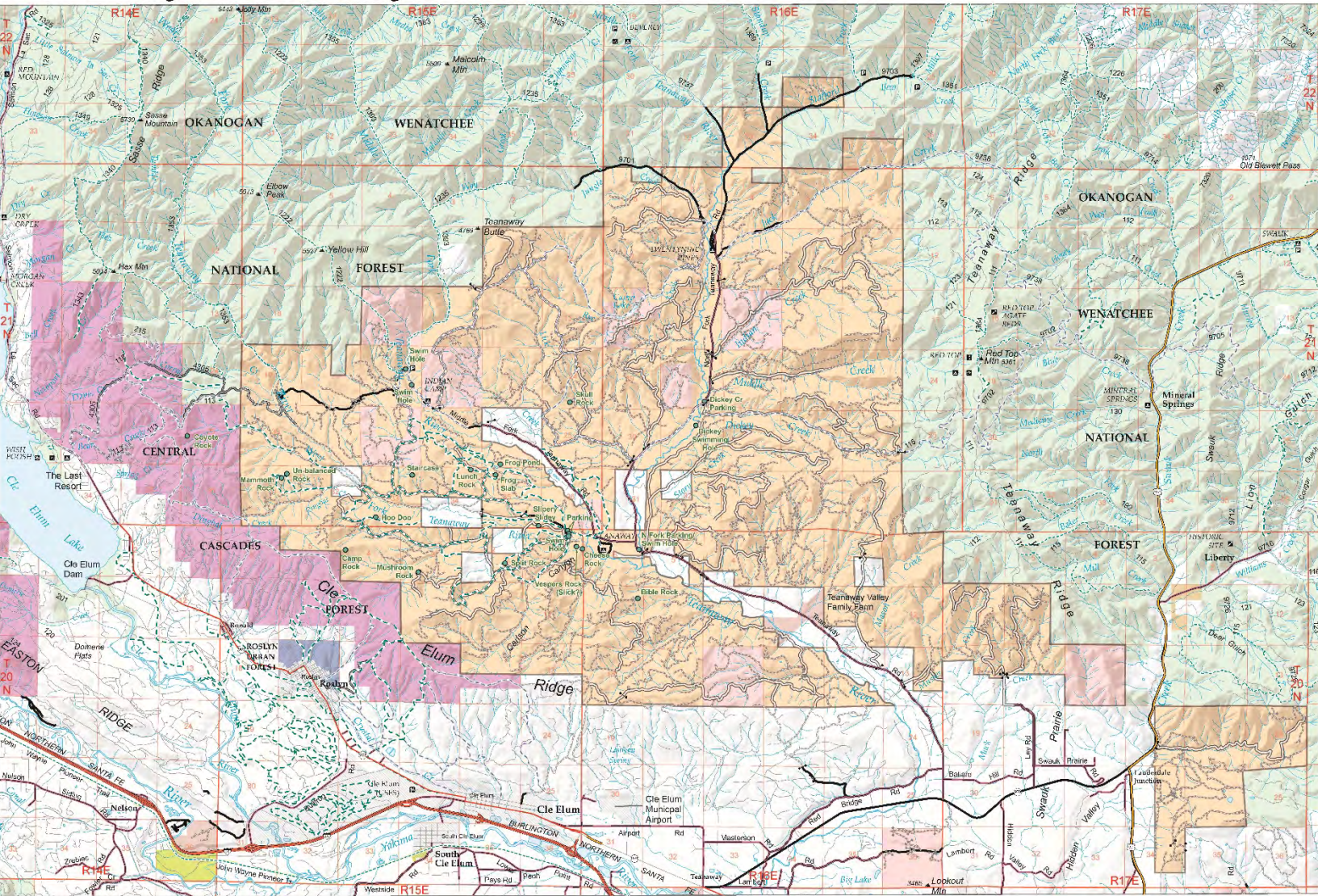
TEANAWAY COMMUNITY FOREST RECREATION PLAN

Facilities



Teanaway Community Forest Recreation Plan: Summer Recreation Planning

Prepared for
November 9, 2017
Planning Meeting



- Teanaway Trails
- Trail, Winter
- Trail, outside TCF
- Known recreation site
- Gate
- Other Physical Barrier

Road Access

- Open
- Unknown
- No Motorized Access
- Abandoned
- County Road
- Other

DNR-Managed Lands

- Teanaway Community Forest
- Other DNR Managed Land

Non-DNR State Lands

- WA State Parks
- WA Dept of Fish and Wildlife

Federal Lands

- US Forest Service
- US Bureau of Land Management

Other Lands

- City or County Lands
- The Nature Conservancy Lands
- Roslyn Urban Forest
- Planning Area Boundary
- City Limits (Census 2010)

Recreation Symbols

- Boat Launch
- Camping
- Picnic Area
- Point of Interest
- Ranger Station
- Fire Lookout
- Parking / Trailhead



Extreme care was used during the compilation of this map to insure accuracy. However, due to changes in ownership and the need to rely on outside information, the Department of Natural Resources cannot accept responsibility for errors or omissions. Therefore, there are no warranties which accompany this material.

DRAFT
This map is for planning / discussion purposes only.
Subject to change without notice.
Cleared: 11/02/17



Teanaway Community Forest Recreation Survey

July 24 – August 24, 2017

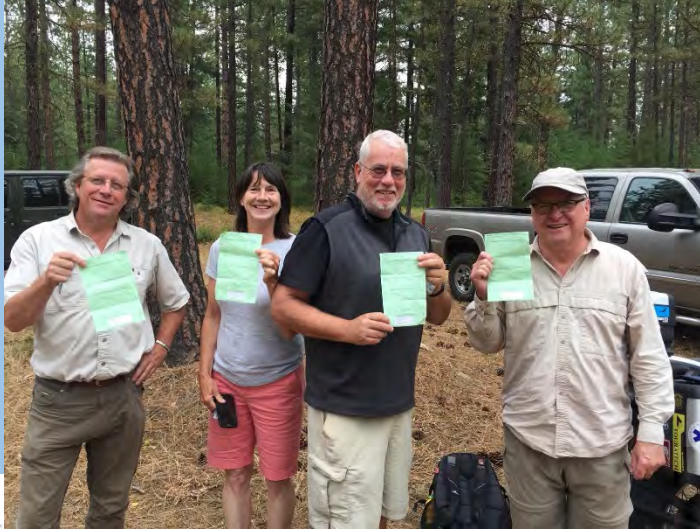
2682 Total Responses

Powered by  SurveyMonkey



Field Trips

- Winter recreation
- Unique rock formations
- What does the purple stuff look like?
- USFS multi-use trails
- Camping areas and river access
- User interaction and enforcement



Motorcycle Use Discussion

#1 ALLOW MOTORCYCLES IN THE TCF?

YES ●●●●●

NO ●●●●●

CONDITIONAL ●●●●●

#2 ALLOW MOTORCYCLES ON EXISTING U.S.F.S. MULTI-USE TRAILS?

a. West Fork

YES ●●●●●●●●●●

NO ●●●●●

CONDITIONAL ●●●●●●●●●●

b. Yellow Hill

YES ●●●●●●●●●●●●●●●●

NO ●●●●●

CONDITIONAL ●●●●●

c. Middle Fork ~~NO FISH MOTORY~~

YES ●●●●●●●●●●

NO ●●●●●●●●●●

CONDITIONAL ●●●●●

#3 ADD ADDITIONAL MOTORCYCLE TRAIL CONNECTIONS AS AN OPTION? (this could be used to mitigate for possible changes somewhere else)

YES ●●●●●

NO ●●●●●

CONDITIONAL ●●●●●●●●●●

#4 DEVELOP A P.M.O. CROSS-COUNTY MOTORCYCLE AREA SEPARATED FROM OTHER NON-MOTORIZED USERS?

YES ●●●●●

NO ●●●●●●●●●●

CONDITIONAL ●●●●●

#5 ALLOW MOTORCYCLE USE ON P.M.O. (P.M.O. CROSS-COUNTY MOTORCYCLE AREA) NON-MOTORIZED TRAILS AS A SHARED USE?

YES ●●●●●

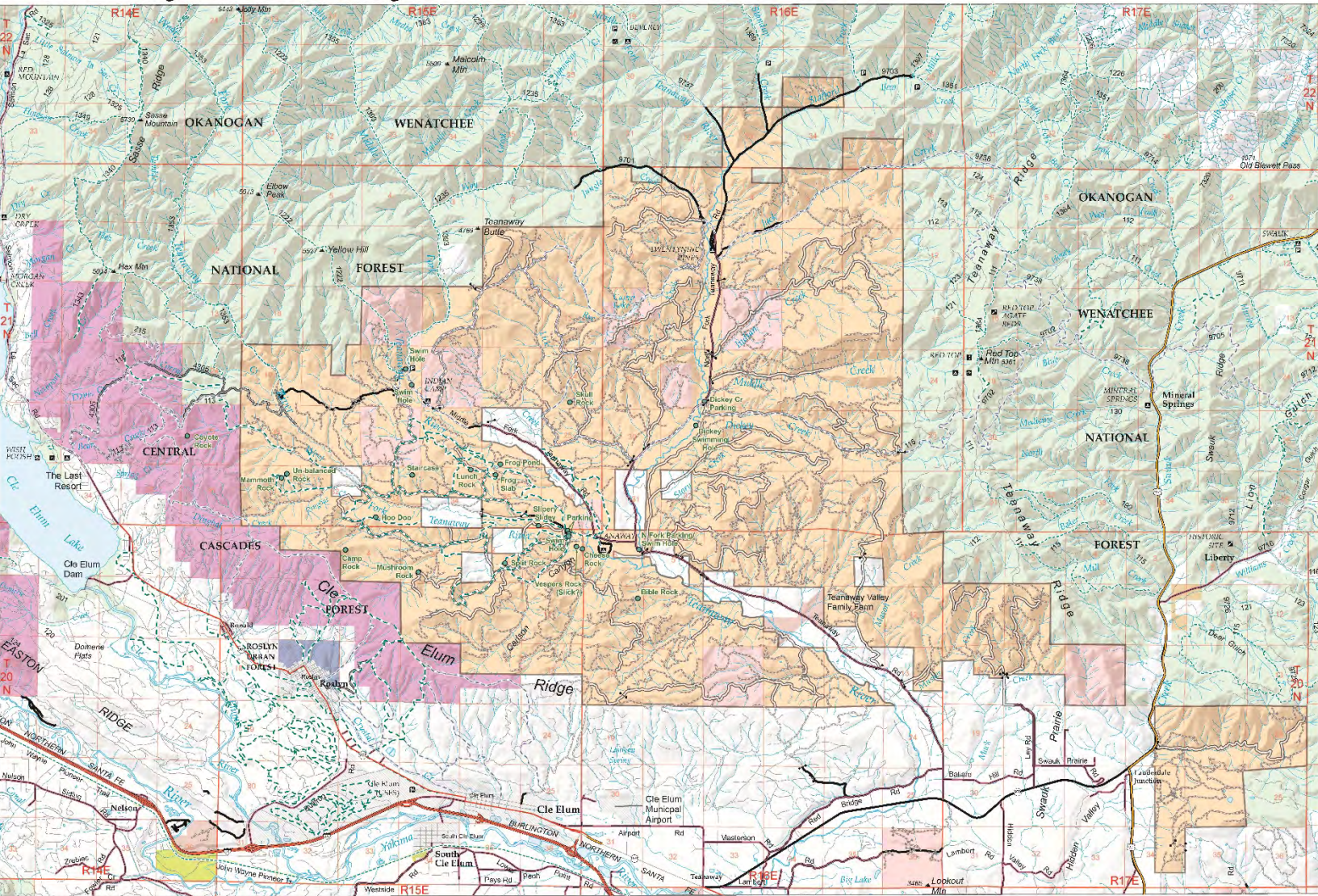
NO ●●●●●●●●●●●●●●●●

CONDITIONAL ●●●●●

Conditional use
- Connect to use
- Connect to use
- Connect to use

Teanaway Community Forest Recreation Plan: Summer Recreation Planning

Prepared for
November 9, 2017
Planning Meeting



- Teanaway Trails
- Trail, Winter
- Trail, outside TCF
- Known recreation site
- Gate
- Other Physical Barrier

Road Access

- Open
- Unknown
- No Motorized Access
- Abandoned
- County Road
- Other

DNR-Managed Lands

- Teanaway Community Forest
- Other DNR Managed Land

Non-DNR State Lands

- WA State Parks
- WA Dept of Fish and Wildlife

Federal Lands

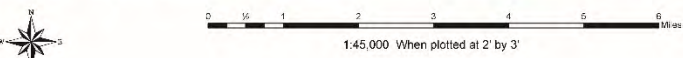
- US Forest Service
- US Bureau of Land Management

Other Lands

- City or County Lands
- The Nature Conservancy Lands
- Roslyn Urban Forest
- Planning Area Boundary
- City Limits (Census 2010)
- Interstate Highway
- U.S. Highway
- State Route

Recreation Symbols

- Boat Launch
- Camping
- Picnic Area
- Point of Interest
- Ranger Station
- Fire Lookout
- Parking / Trailhead



Extreme care was used during the compilation of this map to insure accuracy. However, due to changes in ownership and the need to rely on outside information, the Department of Natural Resources cannot accept responsibility for errors or omissions. Therefore, there are no warranties which accompany this material.

DRAFT
This map is for planning / discussion purposes only.
Subject to change without notice.
Cleared: 11/02/17



Summer Recreation Concept Mapping

- 10-15 year vision
- Community Forest
- Dual use with winter recreation
- Balance goals of Teanaway Community Forest
- Map, list and describe concepts
- **Be Creative**