



Public Auction Sale of Timber

August 2021

Book 1026



IMPORTANT NOTICES

Natural Resources (DNR)

Governmental Regulatory Actions or Orders

The purchaser assumes the risk of liabilities related to regulatory actions or orders by any government agency that may affect the operability of these timber sales. Such regulatory actions or orders include, but are not limited to, actions taken pursuant to the State Forest Practices Act, Chapter 76.09 RCW, and the Federal Endangered Species Act, 16 U.S.C. §§ 1531-1544. Please see timber sale contract clauses G-066 and G-220 for further information.

Threatened and Endangered Species

DNR cannot verify the presence or absence of any threatened or endangered species that may affect the operability of the timber sale. Purchasers must rely on their own assessments.

Export Restricted

All timber purchased under these state DNR contracts shall not be exported outside of the United States until the timber has been processed. Purchasers shall not violate any of the prohibitions in WAC 240-15-015 (relating to the prohibitions on export and substitution), WAC 240-15-025 (relating to reporting requirements), and WAC 240-15-030 (relating to enforcement). If purchasers knowingly violate WAC 240-15-015, purchasers shall be barred from bidding on or purchasing export restricted timber as provided.

Cover photos

Timber Sales in this book are from state trust lands, managed to help build K-12 public schools, state universities, colleges, prisons, mental hospitals, the state Capitol; and to support local services in many counties.

Top right: Landscape view of DNR-managed trust lands in western Washington. Photo courtesy of DNR staff.

Second down right: Timber harvest operations on DNR-managed trust land. Photo courtesy of DNR staff.

Third down right: Log truck loaded with timber harvested from DNR-managed trust land. Photo courtesy of DNR staff.

Bottom right: Marcus Whitman Elementary School in Richland Washington. Photo courtesy of Richland School District.

Bottom middle: Storytime at the Shelton Timberland Library. Photo courtesy of Timberland Regional Library.

Bottom left: Douglas-fir seedlings growing at the Webster Nursery. Many of these seedlings will be planted following timber harvest on DNR-managed trust lands. Photo courtesy of DNR staff.

Table of Contents

Certification Opportunities for DNR Timber Purchasers	Page 3
Bidder/Purchaser Auction and Bidding Information	Page 5
Summary of All Sales Being Offered in August	Page 9
Switched Signal Sorts	Page 11
Hatchet	Page 17
Carry A Tune	Page 21
Q Harvard	Page 25
Q Firecracker	Page 37
Cecil VDT	Page 45
Sealed Bid Form and Instructions	Page 51
Statewide Bid Bond and Instructions	Page 53
Timber Sale per Sale Bid Bond and Instructions	Page 57
Log Sort Sealed Bid Form and Instructions	Page 61



Certification Opportunities for DNR Timber Purchasers

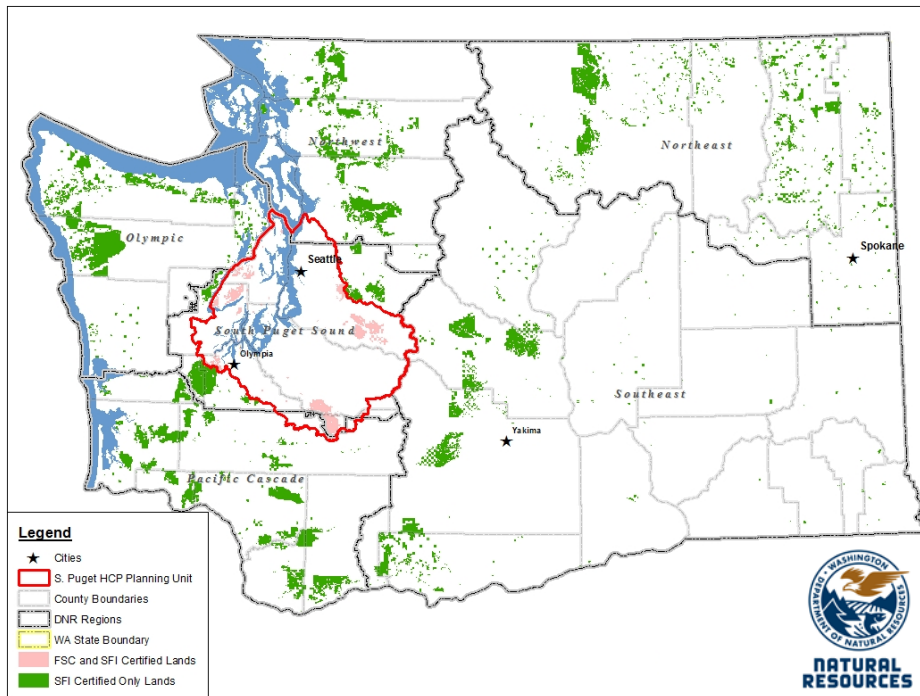
Certified forests are grown to an approved set of standards which demonstrate environmentally responsible, socially beneficial, and economically viable management practices that promote responsible forestry. This unique commitment to responsible forestry recognizes that forest landowners play a critical role in ensuring the long-term health and sustainability of our forests.

Forest Stewardship Council® (FSC®) is an independent, non-profit organization that promotes responsible management of the world's working forests through the development of forest management standards, a voluntary certification system, and trademarks that provide recognition and value to products bearing the FSC label in the marketplace. FSC standards ensure forestry is practiced in an environmentally responsible, socially beneficial, and economically viable way.

Sustainable Forestry Initiative Inc. is an independent, non-profit organization internationally endorsed and accepted around the world. The Sustainable Forestry Initiative® (SFI) program is based on the premise that responsible environmental behavior and sound business decisions can coexist. Its three-chamber Board of Directors governs all aspects of the SFI® program, with equal representation from the environmental, economic, and social sectors.

Currently, all Department of Natural Resources (DNR)-managed forestlands and conservation areas in Washington State are certified under the SFI program Standard. Forestlands within DNR's South Puget Habitat Conservation Plan Planning Unit, located within parts of King, Pierce, Thurston, Lewis, Kitsap, and Mason counties, are dually certified under both the FSC-US Forest Management Standard and the SFI program Standard.

Certification under each standard involves an inspection audit of the landowner's forest management activities by an independent, accredited third-party to verify that it meets specified forest management principles. If the forest unit complies with the specific standard, the landowner receives a certificate of conformance ensuring that responsible forestry is being practiced. Both standards encourage integration of perpetual growing and harvesting of trees with strong measures to protect wildlife, plants, soil, water, and air quality. Both standards provide a seal of approval that forests certified under these principles are well-managed. The global marketplace recognizes and endorses multiple forest certification standards. Each standard has individual market niches. By being dually certified, DNR can maximize its customer base and provide choices to the consumer.



DNR's FSC certificate number is: BV-FM/COC-080501

DNR's SFI certificate number is: PwC-SFIFM-513

DNR-managed forestlands within the South Puget Habitat Conservation Plan Planning Unit (located within parts of King, Pierce, Thurston, Lewis, Kitsap, and Mason counties) are certified as being in compliance with the Forest Stewardship US Forest Management Standard.

To learn more about chain of custody and demonstrating that your timber is derived from a responsibly managed forest and/or to learn more about becoming a participant in the FSC Program, visit <https://us.fsc.org/>.

To learn more about DNR timber sales certified under the FSC Standard, visit www.dnr.wa.gov.

FSC A.C. owns all right, title, and interest in and to the Forest Stewardship Council trademarks.

All DNR-managed forested state trust lands across the state have been certified as being in compliance with the Sustainable Forestry Initiative Forest Management Standard.

To learn more about chain of custody and demonstrating that your timber is derived from a responsibly managed forest and/or to learn more about becoming a participant in the SFI program, visit www.sfiprogram.org.

To learn more about DNR timber sales certified under the SFI program Standard, visit www.dnr.wa.gov.

SFI Marks are registered marks owned by Sustainable Forestry Initiative Inc.

To learn more about certification on DNR-managed forested state trust lands, visit <https://www.dnr.wa.gov/programs-and-services/product-sales-and-leasing/timber-sales/forest-certification> or contact:

Product Sales & Leasing Division, Product Sales Section:

Koshare Eagle, Assistant Division Manager, 360-902-1561, koshare.eagle@dnr.wa.gov
 Steve Teitzel, Operations, 360-902-1741, steve.teitzel@dnr.wa.gov

Forest Resources Division, HCP and Scientific Consultation Section:

Allen Estep, Assistant Division Manager, 360-902-2898, allen.estep@dnr.wa.gov
 Douglas Kennedy, Forest Certification Program Lead, 360-902-1283, douglas.kennedy@dnr.wa.gov

Washington State Department of Natural Resources (DNR)

Bidder's/Purchaser's Inspection of Sale Area and Forest Products

Acreage estimates and volume estimates contained within each timber notice of sale and each timber sale contract are made only for administrative and identification purposes. Except as expressly provided by the timber sale contract, the purchaser shall be responsible for paying the entire purchase price, even if the actual acreage or timber volume varies from the estimated quantity or volume shown.

All prospective bidders have the opportunity and are expected to inspect the sale area and the forest products located thereon. Bidders shall not rely on any representations by the State including, but not limited to, acreage estimates, volume estimates, appraisal or pre-bid documentation. The successful bidder/purchaser will further warrant that they have entered the timber sale contract without any reliance upon the DNR's volume estimates, acreage estimates, appraisals, pre-bid documentation, or any other representation by the DNR.

Any timber sale contract arising out of these public auctions will require the successful purchaser to warrant that they are entering the timber sale contract based solely upon their own judgment of the value of the forest products, formed after their own examination and inspection of both the timber sale area and the forest products being sold.

Exclusion and Disclaimer of Warranties

The PARTIES AGREE that the IMPLIED WARRANTIES OF MERCHANTABILITY AND FITNESS FOR A PARTICULAR PURPOSE, and ALL OTHER WARRANTIES EXPRESS OR IMPLIED, ARE EXCLUDED from this transaction, and shall not apply to the goods sold. For example, THE FOLLOWING SPECIFIC MATTERS ARE NOT WARRANTED, and are EXCLUDED from this transaction:

- A. ***The merchantability of the forest products.*** The use of the term "merchantable" in any document is not intended to vary the foregoing.
- B. ***The condition of the forest products.*** All forest products will be conveyed "AS IS."
- C. ***The acreage contained within any sale area.*** Any acreage descriptions appearing in the timber notices of sale, timber sale contract, timber sale map or other documents are estimates only, provided solely for administrative and identification purposes.
- D. ***The volume, quality, or grade of the forest products.*** The descriptions of the forest products to be conveyed are estimates only, made solely for administrative and identification purposes.
- E. ***The correctness of any soil or surface conditions, presale construction appraisals, investigations, and all other pre-bid documents prepared by or for the State.*** These documents have been prepared for the State's appraisal purposes only.
- F. ***That the sale area is free from threatened or endangered species, or their habitat.*** The State is not responsible for any interferences with forestry operations that result from the presence of any threatened or endangered species, or the presence of their habitat, within the sale area.
- G. That the forestry operations to be performed under this contract will be free from regulatory actions by governmental agencies. The State is not responsible for actions to enforce regulatory laws, such as the Washington Forest Practices Act (Chapter 76.09 RCW), taken by the Department of Natural Resources or any other agency that may affect the operability of these timber sales.
- H. Items contained in any other documents prepared for or by the State.

Please also see timber sale contract clause G-060 for further information.

BIDDING PROCEDURES FOR TIMBER AUCTIONS

The general requirements that follow are a part of all Timber Notices of Sale to be auctioned by the Department of Natural Resources (DNR).

General Information

The State reserves the right to waive minor irregularities and the right to reject any or all bids.

- A. This book contains the timber notices of sale and maps for each timber sale scheduled to be auctioned. More specific information can be obtained by contacting the appropriate region office at the number listed on the back cover of this book. Sales may be added to each monthly auction by the Department which are not included in this publication. This publication is not updated following original production.
- B. The timber notice of sale is a summary of sale information. For more specific information, interested parties are encouraged to view the Auction Packets on www.dnr.wa.gov. Auction Packets contain **DRAFT** copies of the timber notice of sale, map, contract, road plan, cruise data, precruise and cruise narrative, and other associated documents.
- C. Timber sale auction packets may also be obtained at no charge for individual sales by visiting the appropriate region office.
- D. Timber sale contracts contain extensive terms and conditions that will be binding upon successful high bidders. Each bidder should carefully review all terms contained in the appropriate **DRAFT** timber sale contract prior to bidding on a sale, and should review the final contract prior to signing. **DRAFT** timber sale contracts are contained in the auction packets and are available upon request at the respective region office.
- E. Sales advertised in this book are subject to the Board of Natural Resources approval before they will be sold. The Board meets and approves sales approximately six weeks prior to auction.
- F. The State does not guarantee the accuracy of any information contained herein pertaining to particular sales. Therefore, all prospective purchasers are expected to make their own independent inspections and appraisals prior to bidding.
- G. If any conflict exists between the information in the Timber Notice of Sale, timber sale map, sale auction packets and that in the timber sale contract, the signed contract will prevail.
- H. Purchasers must pay the Forest Excise Tax on the bid price, permanent road construction costs, and other considerations. The tax rate is 5% without the EARR credit and 4.2% with the credit. For more information contact the Department of Revenue, Forest Tax Section at 1-800-548-8829.
- I. **All sales are subject to confirmation by the DNR under RCW 79.15.120.**
- J. **Within 30 days of sale confirmation, the apparent high bidder will provide to the State the Performance Security specified on each Notice of Sale. The successful bidder also agrees to return a signed contract to the State within 30 days of confirmation.** Failure to provide a signed contract to the state within 30 days of confirmation may result in a loss of bidder's rights to the products sold and forfeiture of initial deposit moneys.
- K. Each DNR region office has information about sales offered in that region. For further information, contact the respective DNR region office. Region office addresses and telephone numbers appear on the back cover of this booklet.
- L. The purchaser assumes the responsibility for any costs associated with extra maintenance or repair levied by a county for any county road used by the purchaser.

Auction Time and Location

Auctions will start at 10:00 a.m. and close at 4:00 p.m. on the date and at the location specified in each Timber Notice of Sale.

Bidding Process

- A. All timber will be auctioned using the sealed bid method.
- B. Bids submitted on day of auction must be in the bid box at the specified auction location before 10:00 a.m. The respective DNR region office must receive mailed bids by 4:30 p.m., on the last business day before the auction. Bidders assume all risk for the method of delivery.
- C. The DNR has the right to reject bid forms that are completed incorrectly. *All bid forms must have an original signature on behalf of the person or entity submitting the bid, and must be on the form provided in this booklet or a photocopy thereof. Revised documents are not permissible.* Bidding instructions are on the back of the Sealed Bid Form. A bid deposit must be included in the sealed bid envelope unless using a Timber Sale Statewide Bid Bond.
- D. All bids must include the completed Sealed Bid Form and bid deposit.
- E. Bids will be opened in each respective region in the order in which sales appear in the Public Auction Sale of Timber book (alphabetically by county and by agreement number). Sales added after the book is printed will be inserted to retain this order. Sort sales may be auctioned out of this sequence at the State's convenience.
- F. If a tie bid occurs, the names of the tie bidders will be placed in a hat and the successful bidder will be determined by a drawing.
- G. Opportunities to Withdraw Bids:
For all sales offered on a stumpage basis only, the apparent high bidder on a particular sale will have the option of withdrawing additional sealed bids submitted for any remaining sales to be auctioned. The apparent high bidder must exercise this option within two minutes after the apparent high bidder is announced. This option is not available for sales offered on a delivered basis.

Eligibility to Bid

The following criteria must be met in order to bid on State timber sales:

- 18 years of age (or have a co-signer who meets the eligibility requirements)
- Licensed to do business in the State of Washington
- Eligible to bid on Export Restricted timber
- Authorized to submit bids

Authorized Representatives

Company officers or company authorized representatives may bid on State sales, sign State documents, or sign checks. A list of authorized representatives and their specific authorities must be submitted, in writing, to the Department of Natural Resources, Product Sales and Leasing Division, P.O. Box 47014, Olympia, Washington, 98504-7014, ten days in advance of the auction. *A company owner or officer must sign this submittal.*

Bid Deposits

- A. Required bid deposits are listed on each Timber Notice of Sale.
- B. Bid deposits must be in the form of cash, certified check, cashiers' check, money order or bid bond.
- C. Bid bonds may be either a Timber Sale Per Sale Bid Bond or a Timber Sale Statewide Bid Bond.
- D. All bid deposits shall be submitted by the person or entity submitting the bid and made payable to the Department of Natural Resources. **Third party deposits will not be accepted.**

Timber Sale Per Sale Bid Bonds

- A. The Per Sale Bid Bond shall guarantee payment of the bid deposit **within ten days of auction.**
- B. The balance between the bid bond and the Initial Deposit payment is due **by 4:30 p.m., on the day of auction.**
- C. Additional forms and instructions for a Per Sale Bid Bond are available at any DNR region office.

Timber Sale Statewide Bid Bond

- A. Statewide Bid Bonds shall guarantee payment of the Initial Deposit on any statewide timber sale while the bond is in effect.
- B. The Statewide Bid Bond must be received by the Department of Natural Resources, Product Sales and Leasing Division, P.O. Box 47014, Olympia, Washington, 98504-7014, ten days in advance of the auction date. The bond shall be in the amount of \$150,000.00.
- C. Successful bidders using a Statewide Bid Bond must pay the total Initial Deposit payment (10% of the total bid price) **by 4:30 p.m., on the day of the auction.**
- D. A Statewide Bid Bond cannot be used to secure the Initial Deposit payment due the day of auction.
- E. Additional forms and instructions for a statewide bid bond are available at any DNR region office.

Payments

The initial deposit for a sale is 10% of the total bid value as submitted by the apparent high bidder (25% if the bidder is a defaulter as defined under WAC 332-140-300) and never less than \$5,000.00 for lump sum sales. For Lump Sum sales appraised at less than \$5,000.00, the entire bid value is due on day of auction.

- A. Apparent high bidders using cash, certified check, cashiers' check or money order as a bid deposit must pay the total Initial Deposit amount by 4:30 p.m. on auction day.
- B. Apparent high bidders using a Timber Sale Per Sale Bid Bond as a bid deposit must pay the difference between the bid deposit and the total initial deposit by 4:30 p.m., on the day of auction. The bid bond amount must be replaced with a certified check, cashiers' check, bank draft, cash, money order, or wire transfer within ten days of the auction.
- C. Apparent high bidders using a Timber Sale Statewide Bid Bond must pay the entire Initial Deposit amount by 4:30 p.m. on the day of auction.
- D. All payments must be in the form of a certified check, cashiers' check, bank draft, cash, money order or wire transfer.



Summary Report of All Sales for the Month of August 2021

Board Sales

<u>County</u>	<u>Region</u>	<u>Agree #</u>	<u>FSC® Sale Name</u>	<u>Volume</u>	<u>Value</u>
Cowlitz	Pacific Cascade	101765	SWITCHED SIGNAL SORTS	5,631	\$3,254,694.00
Lewis	South Puget	100670	* HATCHET	4,430	\$1,756,000.00
Lewis	Pacific Cascade	101494	CARRY A TUNE	3,601	\$1,293,000.00
Okanogan	Northeast	101630	Q HARVARD	4,694	\$883,000.00
Pend Oreille	Northeast	101610	Q FIRECRACKER	5,985	\$2,490,000.00
Skagit	Northwest	100424	CECIL VDT	4,289	\$1,068,000.00
			Total	28,630	\$10,744,694.00



*Scan with your smartphone or tablet to go
to the August 2021 timber auction page*



TIMBER NOTICE OF SALE

PAYMENT

SECURITY: To be determined by the State as described in Clause P-045.2 of the Purchaser's Contract.

BIDDING

PROCEDURES:

A separate sealed bid and envelope must be submitted for each log sort. Prospective Purchasers may bid on any or all log sorts. On the day of sale the Purchaser must bring their bid deposit up to 10% of their total bid price. Complete bidding procedures and auction information may be obtained from the Pacific Cascade Region Office in Castle Rock WA. Phone number (360)577-2025.

TIMBER EXCISE

TAX:

Purchaser must pay the forest excise taxes associated with the log sorts delivered to them. The tax rate for this sale is 4.2 %. Taxable Stumpage = Total Delivered Value – (Harvest Cost + Estimated Haul Cost + ARRF). For more information contact the Department of Revenue, Forest Tax Section at 1-800-548-8829.

Use the following rates for estimating taxable stumpage:

Harvest Cost = \$0.00 per MBF for sorts 1, 2, 3, 4, 5 and 6 and \$12.00 per Ton for sorts 7, 8 and 9.

Hauling Services Payment Rate per Ton
= (Base Rate + Mileage Rate) x (Contractor's hauling bid factor)

Base Rate = \$2.35 per ton

Mileage Rate = ((\$0.16 x C miles) + (\$0.11 x A miles)) x Fuel Index Factor

ARRF = \$0.00 per MBF for sorts 7, 8 and 9 and \$26.00 per MBF for sorts 1, 2, 3, 4, 5 and 6.

Note: To calculate ARRF rates per ton use the tons\mbf conversion factor in the table above.

Long-haul surcharge: An additional haul payment of \$25/mbf net scale for mbf scale sorts or \$4.60/ton for tonnage sorts will be added for delivery destinations in excess of 250 total one-way miles (A miles plus C miles).

CONFIRMATION:

Each sort is subject to confirmation following auction. Sorts will not be confirmed until at least 10 days after auction. Final contract award is contingent upon the State's haul cost analysis. Actual haul route may vary and is subject to change at the State's discretion.

SPECIAL REMARKS:

The successful Purchaser(s) will be required to purchase logs from the sale area upon delivery to their location specified in the bid submitted. Logs will be delivered to the Purchaser's delivery location by the State's contract harvester. Purchaser is responsible for weighing and scaling costs. All tonnage loads will be weighed and all mbf loads will be scaled at State approved locations. The State reserves the right to determine where logs are authorized to be scaled and weighed.

Unit 1 thinning and any roads in all units must be completed before Unit 2 or Unit 3 are harvested.



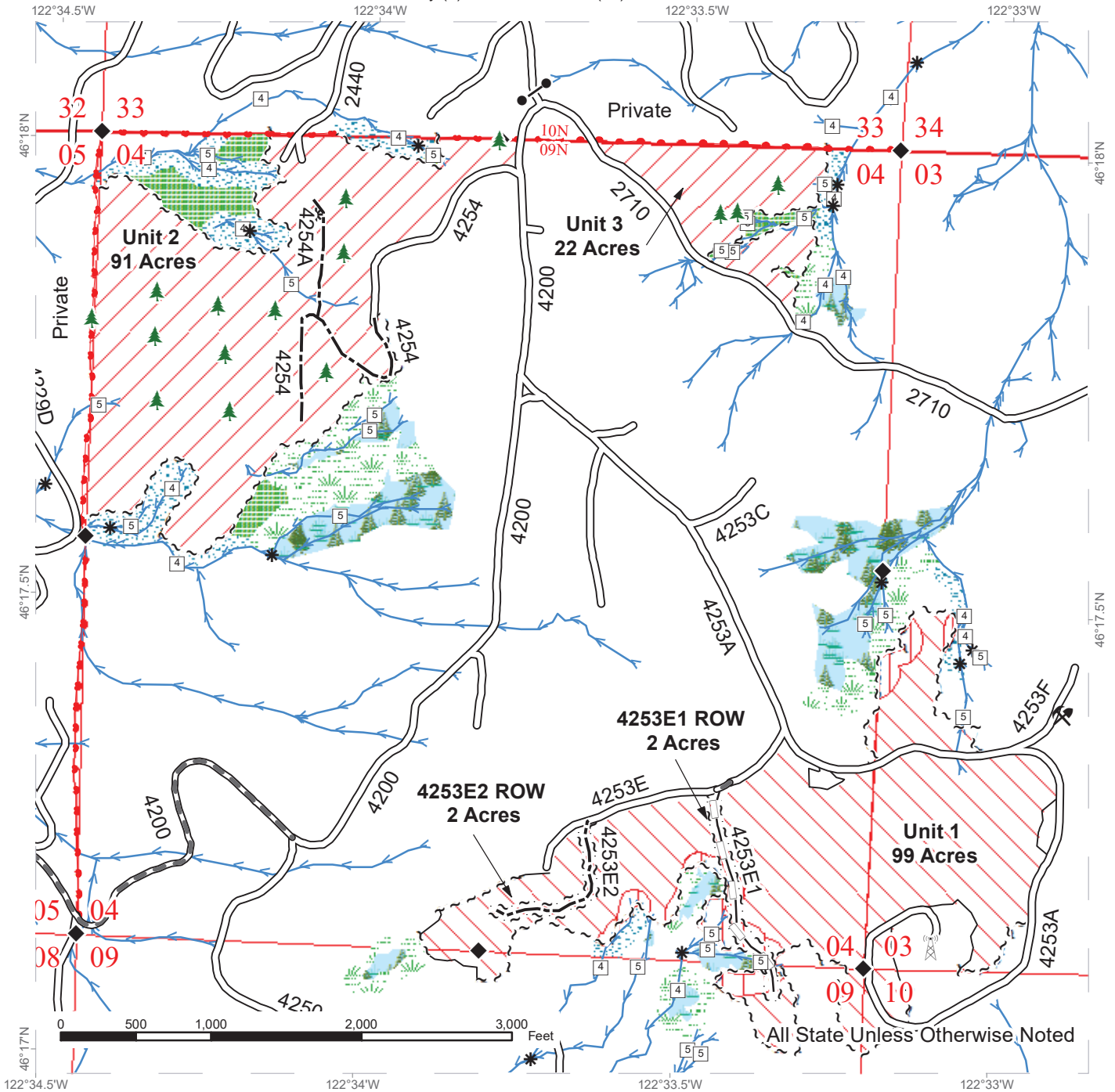
TIMBER NOTICE OF SALE

For more information regarding this log sort sale visit our web site:
<http://www.dnr.wa.gov/programs-and-services/product-sales-and-leasing/timber-sales/timber-auction-packets>. If you have questions call Jon Olson at the Pacific Cascade Region Office at (360)577-2025 or Steve Teitzel at the Product Sales and Leasing Division Office in Olympia at (360)902-1741.

TIMBER SALE MAP

SALE NAME: SWITCHED SIGNAL SORTS
AGREEMENT #: 30-101765
TOWNSHIP(S): T9R2E
TRUST(S): Common School and Indemnity (3), Scientific School (10)

REGION: Pacific Cascade Region
COUNTY(S): Cowlitz
ELEVATION RGE: 2040-3266



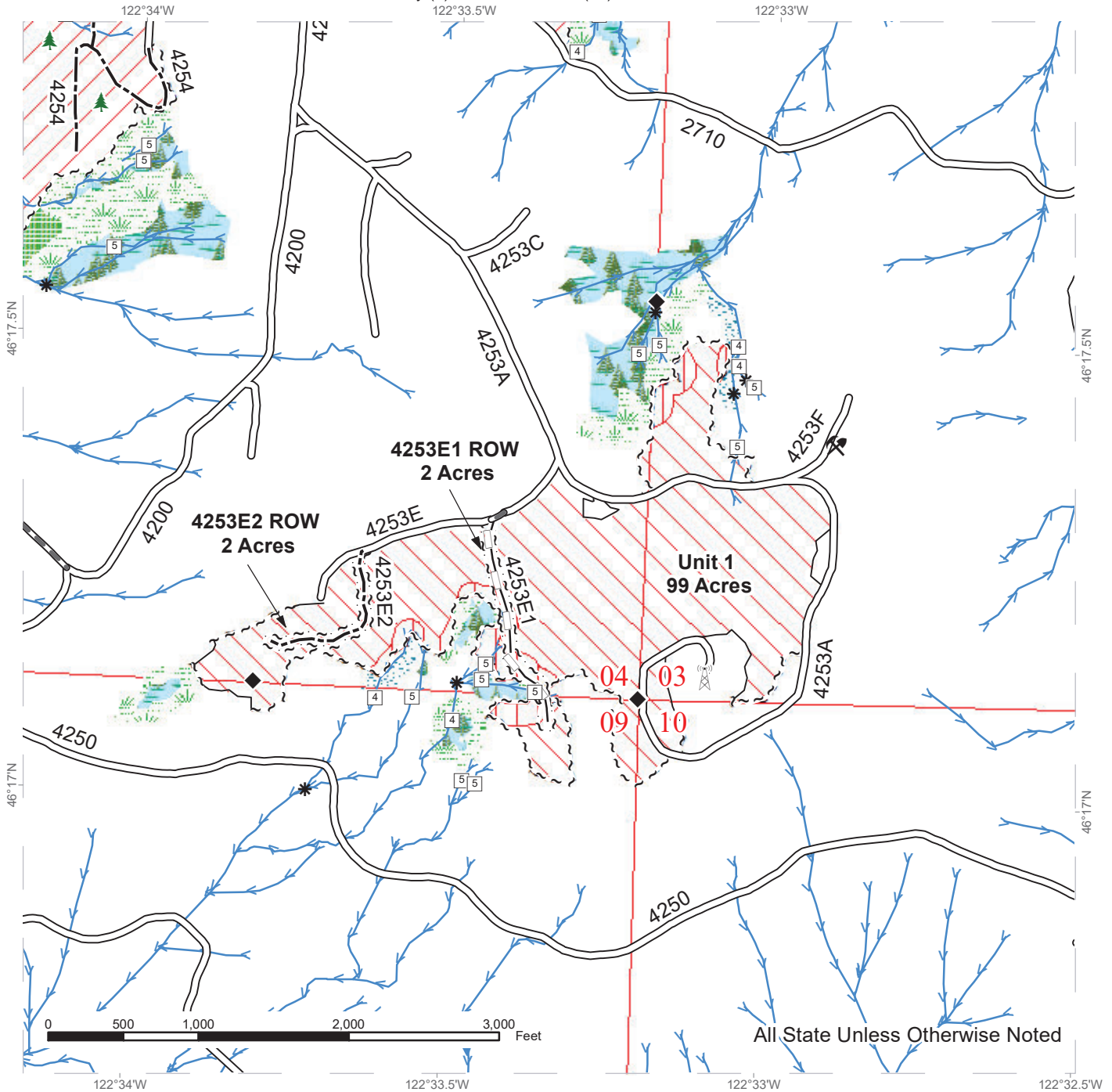
Variable Retention Harvest	Sale Boundary Tags	Streams
Variable Density Thinning	Right of Way Tags	Stream Type
Riparian Restoration	Property Line	Stream Type Break
Leave Tree Area	Timber Type Change	Survey Monument
Riparian Mgt Zone	Existing Roads	Communication Tower
Forested Wetland	Required Pre-Haul Maintenance	Gate
Wetland Mgt Zone	Optional Construction	Leave Tree Area <1/4-acre
	Optional Reconstruction	Rock Pit



TIMBER SALE MAP

SALE NAME: SWITCHED SIGNAL SORTS
AGREEMENT #: 30-101765
TOWNSHIP(S): T9R2E
TRUST(S): Common School and Indemnity (3), Scientific School (10)

REGION: Pacific Cascade Region
COUNTY(S): Cowlitz
ELEVATION RGE: 2040-3266



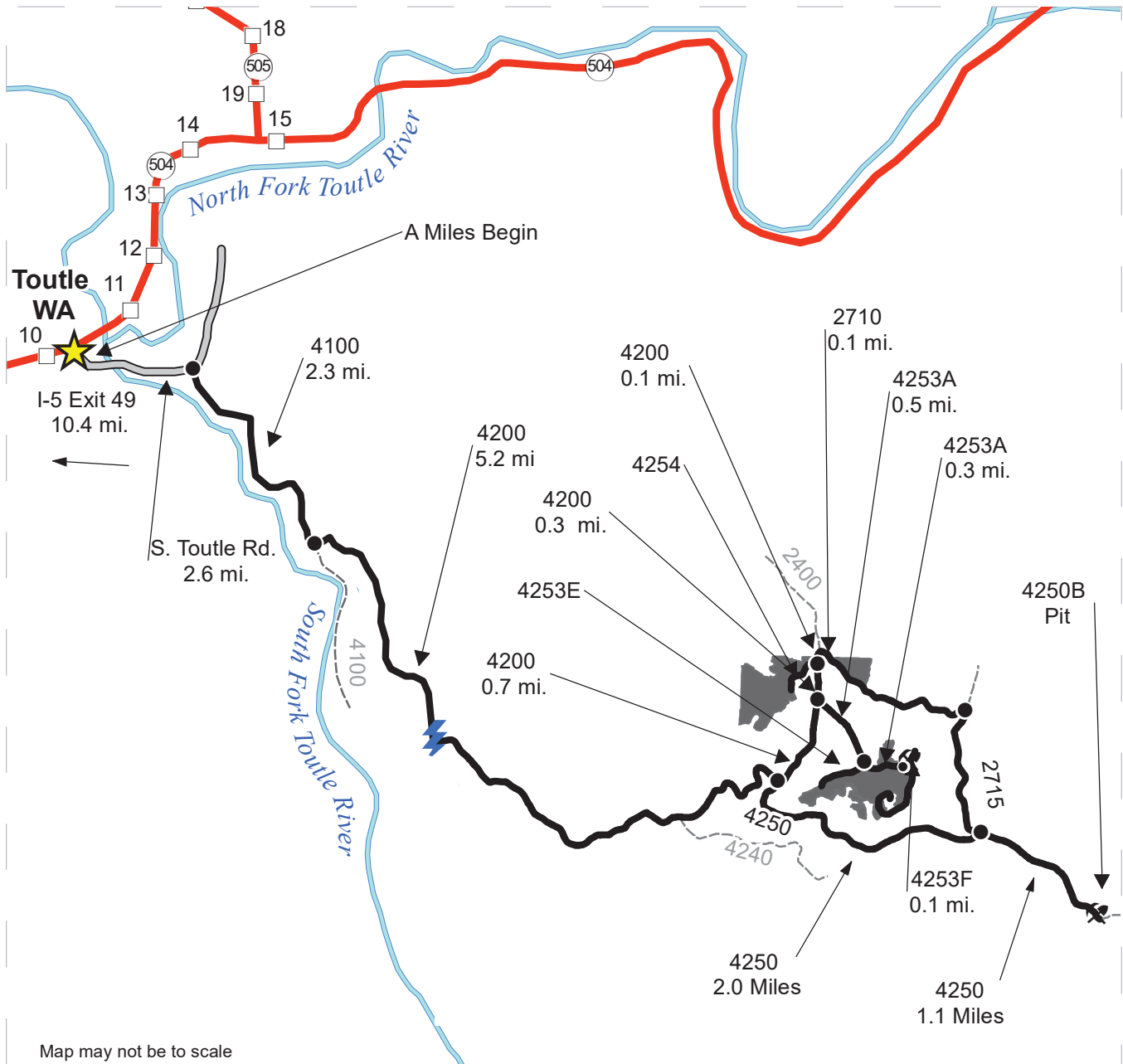
Variable Retention Harvest	Sale Boundary Tags	Streams
Variable Density Thinning	Right of Way Tags	Stream Type
Riparian Restoration	Timber Type Change	Stream Type Break
Leave Tree Area	Existing Roads	Survey Monument
Riparian Mgt Zone	Required Pre-Haul Maintenance	Communication Tower
Forested Wetland	Optional Construction	Leave Tree Area <1/4-acre
Wetland Mgt Zone	Optional Reconstruction	Rock Pit



DRIVING MAP

SALE NAME: SWITCHED SIGNAL SORTS
 AGREEMENT#: 30-101765
 TOWNSHIP(S): T9R2E
 TRUST(S): Common School and Indemnity (3), Scientific School (10)

REGION: Pacific Cascade Region
 COUNTY(S): Cowlitz
 ELEVATION RGE: 2040-3266



Map may not be to scale

- Timber Sale Unit
- Haul Route
- View Only Route
- Highway
- County Road
- Milepost Markers
- Rock Pit

Take Exit 49 off I-5. Follow SR 504 east for 10.4 miles. Turn right onto South Toutle Rd. Continue for 2.6 miles and turn right onto the 4100 Rd. Drive 2.3 miles on the 4100, to the 4100/4200 intersection. Turn left onto the 4200 and continue for 5.2 miles until reaching the 4200/4250 intersection. At the junction stay left to continue onto the 4200 for 0.7 miles to the 4253A junction.

4250B Pit: From The 4200/4250 Junction turn right onto the 4250 and follow for 3.1 miles, the pit will be on the left.

Unit 1: From the 4200 turn right onto the 4253A and follow for 0.5 miles to the 4253A and 4253E Junction. It will be off of both the 4253A and E at this point.

Units 2 and 3: From the 4253A continue on the 4200 for 0.3 miles. Turn left onto the 4254, Unit 2 will be on the right. From the 4254 continue on the 4200 for 0.1 miles to the 4200/2400/2710 intersection. Turn right onto the 2710 and Unit 3 will be on the left after 0.1 miles.





TIMBER NOTICE OF SALE

SALE NAME: HATCHET

AGREEMENT NO: 30-100670

AUCTION: August 24, 2021 starting at 10:00 a.m., **COUNTY:** Lewis
South Puget Sound Region Office, Enumclaw, WA

SALE LOCATION: Sale located approximately 9 miles east of Mineral.

PRODUCTS SOLD AND SALE AREA: All timber, except trees bounded out by yellow leave tree area tags, snags, and down timber existing more than 5 years from the day of sale, bounded by the following: white timber sale boundary tags in Unit #1; white timber sale boundary tags and the RT 200 Road in Unit #2;

All timber bounded by orange right of way tags in Units #3 and #4;

All forest products above located on part(s) of Sections 5 and 6 all in Township 14 North, Range 6 East, W.M., containing 105 acres, more or less.

CERTIFICATION: This sale is certified under the Sustainable Forestry Initiative® program Standard (cert no: PwC-SFIFM-513) and FSC 100% raw materials under the Forest Stewardship Council® Standard (cert no: BV-FM/COC-080501).

ESTIMATED SALE VOLUMES AND QUALITY:

Species	Avg DBH	Ring Count	Total MBF	MBF by Grade								
				1P	2P	3P	SM	1S	2S	3S	4S	UT
Douglas fir	18.6	9	2,398				130		1,240	831	169	28
Hemlock	14.2	10	1,887						539	969	308	71
Red alder	13.3		124						25	35	43	21
Cottonwood	23		11						8		3	
Red cedar	13.4		10							5	5	
Sale Total			4,430									

MINIMUM BID: \$1,756,000.00 **BID METHOD:** Sealed Bids

PERFORMANCE SECURITY: \$100,000.00 **SALE TYPE:** Lump Sum

EXPIRATION DATE: October 31, 2023 **ALLOCATION:** Export Restricted

BID DEPOSIT: \$175,600.00 or Bid Bond. Said deposit shall constitute an opening bid at the appraised price.

HARVEST METHOD: Harvest activities are estimated to be 50 percent ground based harvest and 50 percent uphill cable. Cable and ground based equipment, with cable-tethered equipment limited to sustained slopes 75 percent or less, self-leveling equipment limited to sustained slopes 65 percent or less, and all other ground based equipment limited to sustained slopes 45 percent or less. Yarding may be restricted during wet weather if rutting becomes excessive, per clause H-017.



TIMBER NOTICE OF SALE

ROADS: 20.58 stations of required reconstruction. 31.41 stations of optional construction. 341.64 stations of required prehaul maintenance. Purchaser maintenance on RT 200 ext, RT 210, RT 212, and RT 213 roads. Designated maintenance on all other roads used.

Rock for this proposal may be obtained from the State owned RT200 and Spitfire Rock Pits at no cost to the Purchaser, any commercial rock source at the Purchaser's expense or a possible onsite rock source, the PRS1 Pit located within Unit #2, if quality is approved by the Contract Administrator. Rock source development will be required per Section 6 in the Road Plan and as specified in the Rock Source Development Plan.

Operation of road construction equipment and rock haul will not be permitted from November 1 to May 15, nor on State recognized holidays, unless authority to do so is granted, in writing, by the Contract Administrator. If permission is granted to operate from November 1 to May 15, the Purchaser shall comply with a maintenance plan per Road Plan clause 1-26.

ACREAGE DETERMINATION

CRUISE METHOD: Acreage was determined by traversing boundaries by GPS in Units #1 and #2, and length times width for Units #3 and #4. GPS data files are available at DNR's website for timber sale auction packets. See cruise narrative for cruise method.

FEES: \$75,310.00 is due on day of sale. \$9.00 per MBF is due upon removal. These are in addition to the bid price.

SPECIAL REMARKS: This sale contains high quality Douglas fir. See Cruise for details.

There are non-tradeable leave tree areas and tailhold restriction areas associated with this sale for slope stability protection. See clause H-141.

Cut all vine maple within the harvest units, leaving a stump no more than 12 inches in height.

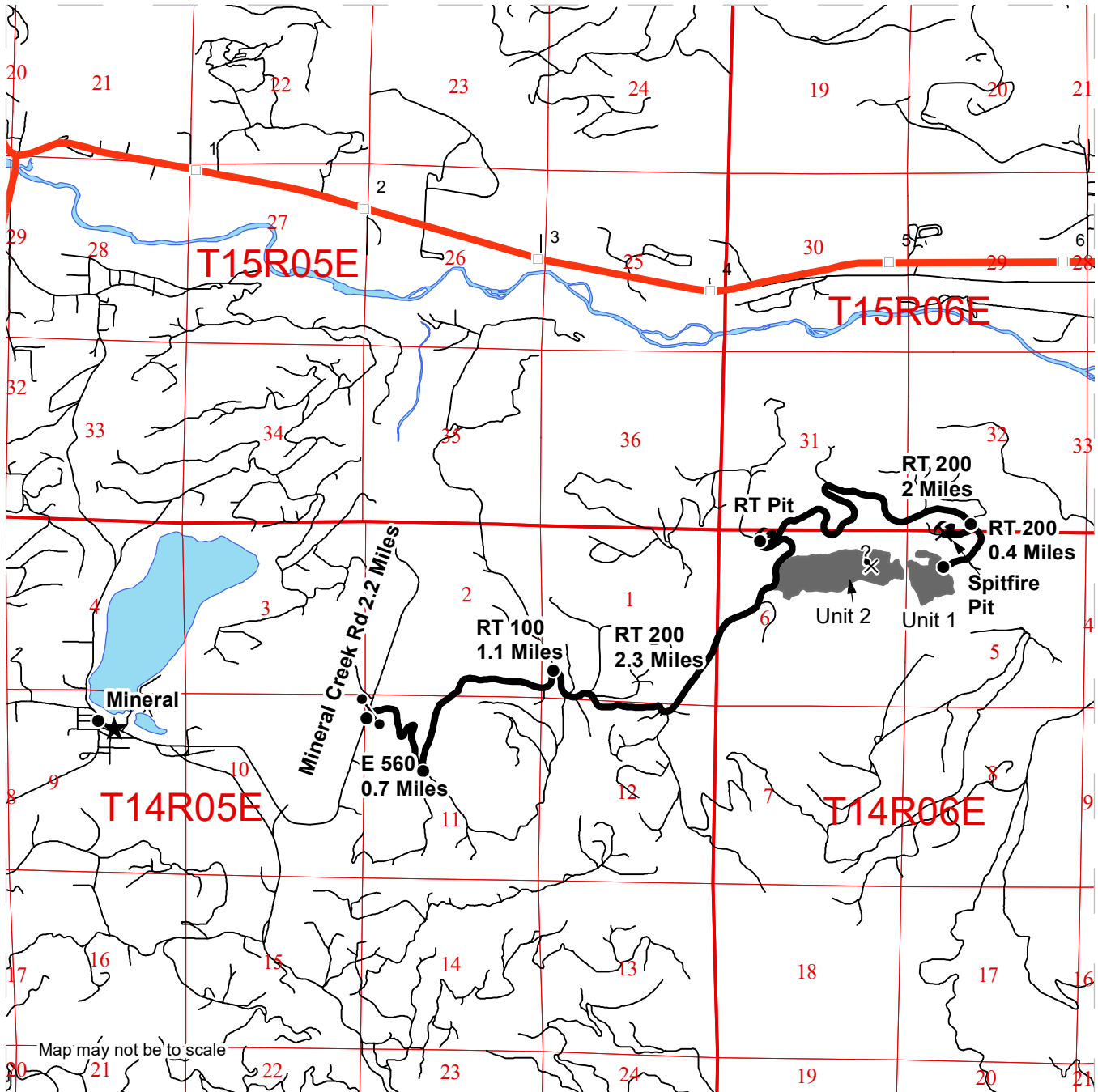
For the safety of the public, please remove from roads all string from string boxes used during appraising or cruising this sale.

See map for gate locations. Gate keys may be obtained by contacting the South Puget Sound Region Office at 360-825-1631 or by contacting Kevin Carlsen at 360-870-4090.

DRIVING MAP

SALE NAME: HATCHET
AGREEMENT#: 30-100670
TOWNSHIP(S): T14R6E
TRUST(S): State Forest Transfer (1)

REGION: South Puget Sound Region
COUNTY(S): Lewis
ELEVATION RGE: 2082-3280



Map may not be to scale

- Timber Sale Unit
- Haul Route
- Distance Indicator
- Gate (383 Master Lock)
- Potential Rock Source
- Rock Pit
- Town
- Milepost Markers

DRIVING DIRECTIONS:

Unit 1 and 2: Take Mineral Creek Road east from Mineral for 2.2 miles. Turn right onto the E-560 road and follow for 0.7 miles. Bear left and continue on the RT 100 road for 1.1 miles. Turn right onto the RT 200 road and follow for 2.3 miles to reach RT Pit. Continue on the RT 200 road for 2.4 miles to reach Units 1 and 2.

Spitfire Pit- Continue on the RT200 from the RT pit for 2 miles. Turn right onto the RT210 and follow for 0.2 miles.





TIMBER NOTICE OF SALE

SALE NAME: CARRY A TUNE

AGREEMENT NO: 30-101494

AUCTION: August 26, 2021 starting at 10:00 a.m., **COUNTY:** Lewis
Pacific Cascade Region Office, Castle Rock, WA

SALE LOCATION: Sale located approximately 10 miles north of Mossyrock

**PRODUCTS SOLD
AND SALE AREA:**

All timber, except leave trees bounded by yellow "Leave Tree Area" tags, leave trees marked with blue paint, and all down timber existing 5 years prior to the day of sale, snags, bounded by the following:

White "Timber Sale Boundary" tags, blue "Special Management Unit Boundary" tags, the H-9000 road, the H-9300 road and the H-9310 road in Unit 1.

White "Timber Sale Boundary" tags, blue "Special Management Unit Boundary" tags, the H-9000 road and the H-9600 road in Unit 2.

White "Timber Sale Boundary" tags, blue "Special Management Unit Boundary" tags, the H-9000 road and all timber described in Schedule A in Unit 3.

White "Timber Sale Boundary" tags, blue "Special Management Unit Boundary" tags, the H-9000 road and all timber described in Schedule A in Unit 4.

White "Timber Sale Boundary" tags, blue "Special Management Unit Boundary" tags, the H-9000 road and all timber described in Schedule A in Unit 5.

White "Timber Sale Boundary" tags, blue "Special Management Unit Boundary" tags, the H-9000 road and Schedule A in Unit 6.

All forest products above located on part(s) of Sections 32 and 33 all in Township 13 North, Range 3 East, W.M., containing 171 acres, more or less.

CERTIFICATION: This sale is certified under the Sustainable Forestry Initiative® program Standard (cert no: PwC-SFIFM-513)

ESTIMATED SALE VOLUMES AND QUALITY:

Species	Avg Ring DBH	Ring Count	Total MBF	MBF by Grade								
				1P	2P	3P	SM	1S	2S	3S	4S	UT
Hemlock	17.5	5	2,157						1,142	782	172	61
Douglas fir	17.3	5	1,399						576	681	127	15
Red alder	11.1		45							7	36	2
Sale Total			3,601									

MINIMUM BID: \$1,293,000.00 **BID METHOD:** Sealed Bids

PERFORMANCE SECURITY: \$100,000.00 **SALE TYPE:** Lump Sum

EXPIRATION DATE: October 31, 2023 **ALLOCATION:** Export Restricted



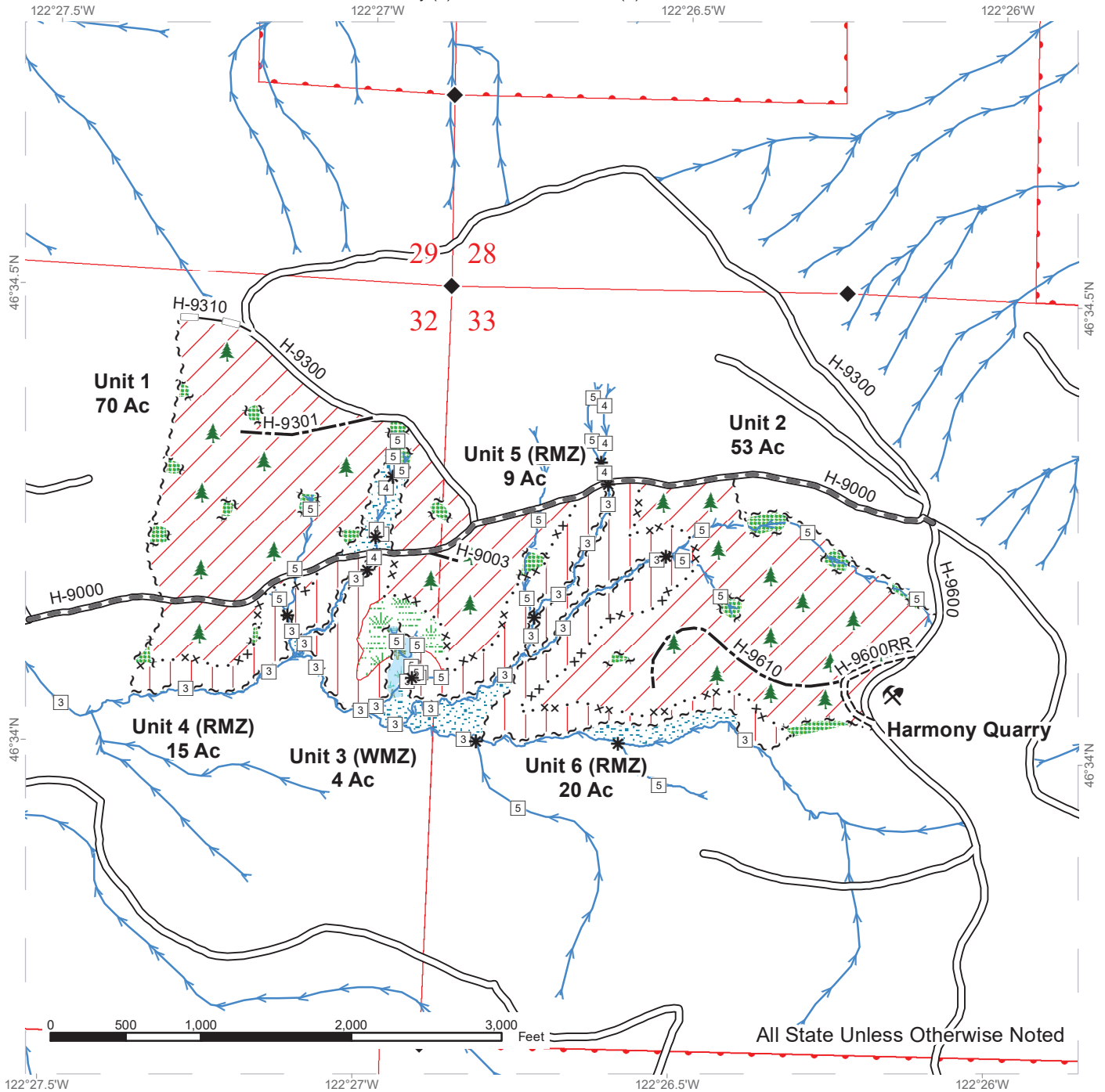
TIMBER NOTICE OF SALE

- BID DEPOSIT:** \$129,300.00 or Bid Bond. Said deposit shall constitute an opening bid at the appraised price.
- HARVEST METHOD:** Estimated 100% ground based. Ground Based Yarding will not be permitted in Units 3, 4, 5 and 6 from November 1 to March 31 unless authorized in writing by the Contract Administrator. Ground Based Yarding will not be permitted from November 1 to March 31 unless authorized in writing by the Contract Administrator.
- ROADS:** 9.80 stations of required construction. 28.52 stations of optional construction. 5.10 stations of optional reconstruction. 63.10 stations of required prehaul maintenance. Rock used in accordance with the quantities on the ROCK LIST may be obtained from the Harmony Quarry located in Sec 33, T13N, R03E W.M. Rock used in accordance with the quantities on the ROCK LIST may be obtained from any commercial source at the Purchaser's expense subject to written approval from Contract Administrator. Gate installation at station 5+65 on the H-9600 road, see GATE FABRICATION DETAIL and GATE INSTALLATION DETAIL in the road plan. All road work will not be permitted from October 1 to April 30 unless authorized in writing by the Contract Administrator. The hauling of forest products will not be permitted from November 1 to April 30 unless authorized in writing by the Contract Administrator.
- ACREAGE DETERMINATION**
- CRUISE METHOD:** The sale acres were determined by GPS. The cruise was completed using the variable plot cruise method.
- FEES:** \$61,217.00 is due on day of sale. \$9.00 per MBF is due upon removal. These are in addition to the bid price.
- SPECIAL REMARKS:** This sale contains approximately 12 Mbf of Douglas-fir HQ 2 Saw and 78 Mbf of Douglas-fir HQ 3 Saw. See cruise for further details.

TIMBER SALE MAP

SALE NAME: CARRY A TUNE VRH RMZ
AGREEMENT #: 30-101494
TOWNSHIP(S): T13R3E
TRUST(S): Common School and Indemnity (3), State Forest Transfer (1)

REGION: Pacific Cascade Region
COUNTY(S): Lewis
ELEVATION RGE: 1600-2080



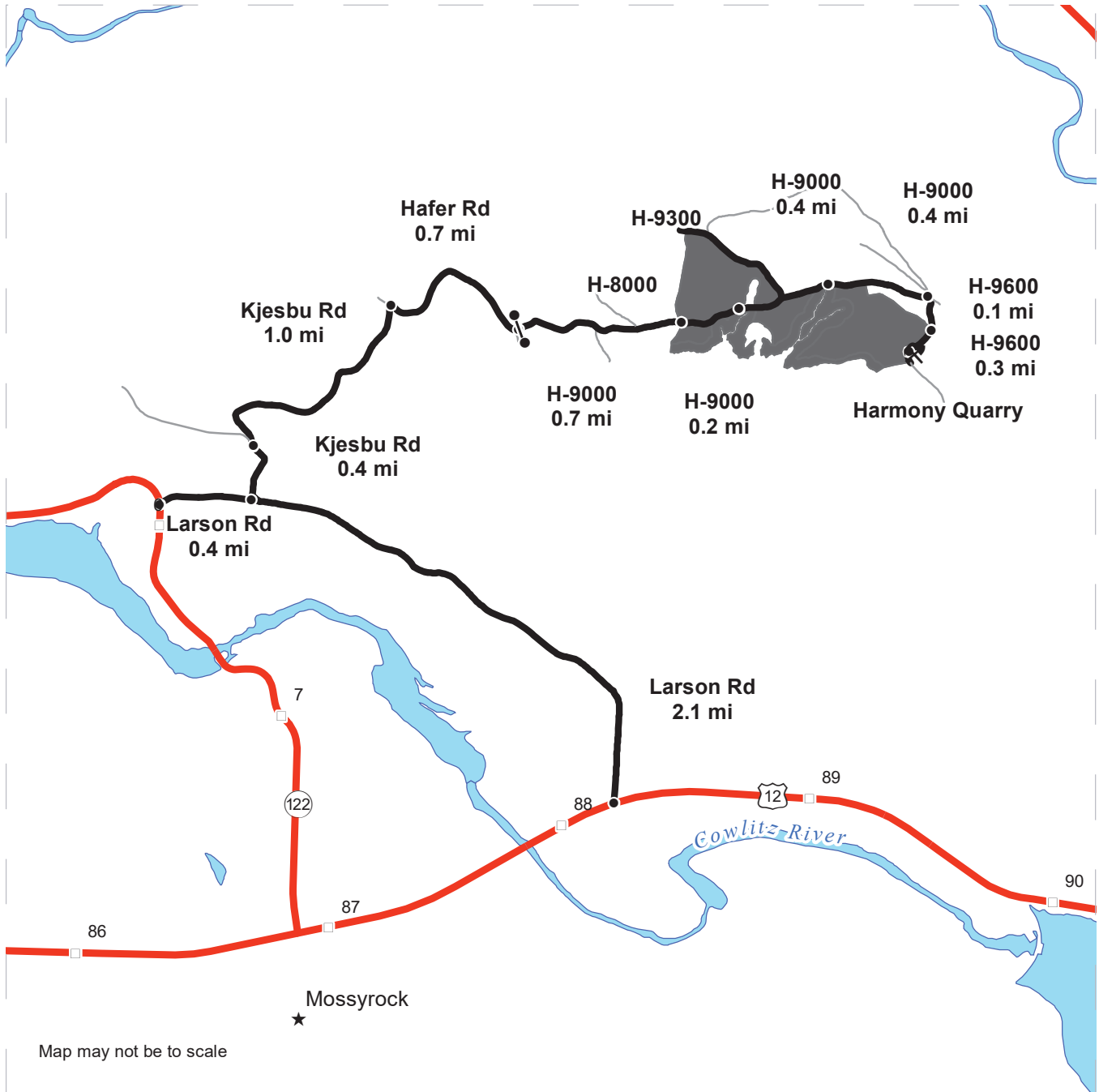
All State Unless Otherwise Noted

Variable Retention Harvest	Sale Boundary Tags	Streams
Riparian Restoration	Special Mgmt Area	Stream Type
Leave Tree Area	Leave Tree Tags	Stream Type Break
Forested Wetland	Right of Way Tags	Survey Monument
Riparian Mgt Zone	Existing Roads	Leave Tree Area
Wetland Mgt Zone	Required Pre-Haul Maintenance	Rock Pit
	Required Construction	
	Optional Construction	
	Optional Reconstruction	

DRIVING MAP

SALE NAME: CARRY A TUNE VRH RMZ
AGREEMENT#: 30-101494
TOWNSHIP(S): T13R3E
TRUST(S): Common School and Indemnity (3), State Forest Transfer (1)

REGION: Pacific Cascade Region
COUNTY(S): Lewis
ELEVATION RGE: 1600-2080



Map may not be to scale

- Timber Sale Unit
- Haul Route
- Other Road
- Milepost Markers
- 12 HWY 12
- Distance Indicator
- 1-1

 Gate (PCP 1-1)
- X

 Rock Pit

DRIVING DIRECTIONS:

Between MP 88 and 89 on Highway 12, turn north onto Larson Rd.
 Follow Larson Rd. for 2.1 miles.
 Turn right onto Kjesbu Rd and follow for 1.4 miles.
 Turn right onto Hafer Rd. and follow for 0.7 miles to the H-9000.
 To reach Unit 1, follow the H-9000 for 0.7 miles to Unit 1.
 Continue on the H-9000 for 0.2 miles to reach Unit 4.
 Continue on the H-9000 for 0.4 miles to reach Unit 5 and 6.
 To reach Unit 2, follow the H-9000 for 0.4 miles.
 Turn right onto the H-9600 for 0.1 miles to Unit 2.
 Unit 3 is to the south of Unit 1.





TIMBER NOTICE OF SALE

SALE NAME: Q HARVARD

AGREEMENT NO: 30-101630

AUCTION: August 24, 2021 starting at 10:00 a.m.,
Northeast Region Office, Colville, WA

COUNTY: Okanogan

SALE LOCATION: Sale located approximately 15 miles north of Republic, WA, and 9 miles north of Wauconda, WA.

PRODUCTS SOLD AND SALE AREA:

All green conifer species (excluding ponderosa pine) except for leave trees banded with purple paint in Units 1, 2, 3, 4, 5, 6, 7, 8, 9, 10, 11, 12 and 13 bounded by white timber sale boundary tags and all right of way timber bounded by orange right of way tags or marked with orange paint.

All forest products above located on part(s) of Sections 1, 2, 3, 12, 13, 22, 23 and 36 all in Township 38 North, Range 31 East, W.M., containing 515 acres, more or less.

CERTIFICATION: This sale is certified under the Sustainable Forestry Initiative® program Standard (cert no: PwC-SFIFM-513)

ESTIMATED SALE VOLUMES AND QUALITY:

Species	Avg Ring DBH	Ring Count	Total MBF	MBF by Grade								
				P	SM	1S	2S	3S	4S	5S	6S	UT
Douglas fir	13		3,126				873	1,682	571			
Larch	14.5		1,401				432	814	155			
Spruce	12.8		101				33	55	13			
Lodgepole	12.2		66					51	15			
Sale Total			4,694									

MINIMUM BID: \$883,000.00

BID METHOD: Sealed Bids

PERFORMANCE SECURITY:

\$100,000.00

SALE TYPE: Lump Sum

EXPIRATION DATE: November 15, 2023

ALLOCATION: Export Restricted

BID DEPOSIT: \$88,300.00 or Bid Bond. Said deposit shall constitute an opening bid at the appraised price.

HARVEST METHOD: Dozer, Rubber tired skidder, Ground based equipment, and Cable-Assist. Falling and Yarding will not be permitted from March 15 to June 1 unless authorized in writing by the Contract Administrator due to spring break up.

ROADS: 201.75 stations of required construction. 620.03 stations of required prehaul maintenance. Road construction will not be permitted from March 15 to June 1 unless authorized in writing by the Contract Administrator due to spring break up. The hauling of forest products will not be permitted from March 15 to June 1 unless authorized in writing by the Contract Administrator due to spring break up.

ACREAGE DETERMINATION



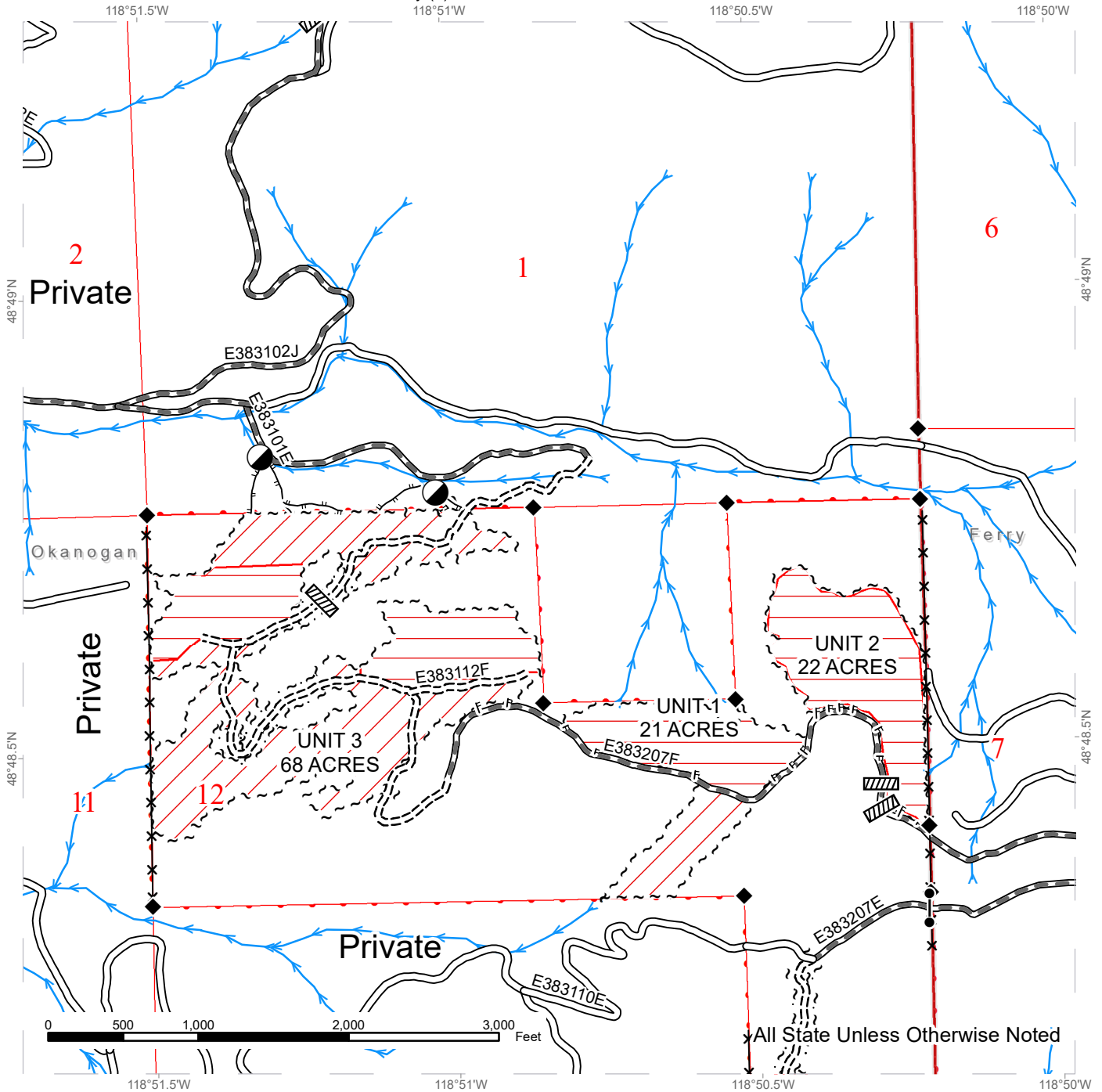
TIMBER NOTICE OF SALE

- CRUISE METHOD:** Acreage determined using GPS methods. Acreage shown above is net harvest acres in harvest units. All species: 7.0 - 17.5 inches dbh has minimum top of 4.6 inch dib. All species 17.6 inches and greater dbh have a minimum top dib of 40% of dob at 16 feet or a 6 inch top whichever is greater.
- FEES:** Within 10 days of day of sale, Purchaser shall provide payment for a road use permit in the amount of \$3,000.00. Purchaser shall provide payment for 1 mbf and 14 mbf of private right of way timber at the purchaser's per mbf bid price. \$79,798.00 is due on day of sale. \$9.00 per MBF is due upon removal. These are in addition to the bid price.
- SPECIAL REMARKS:** Locked gate restricts access to the sale area. Contact the Northeast Region Office at (509) 684-7474 for access. There is approximately 181 acres of recommended cable-assist harvesting.

TIMBER SALE MAP

SALE NAME: Q HARVARD
AGREEMENT #: 30-101630
TOWNSHIP(S): T38R31E
TRUST(S): Common School and Indemnity (3)

REGION: Northeast Region
COUNTY(S): Okanogan
ELEVATION RGE: 3320-5000



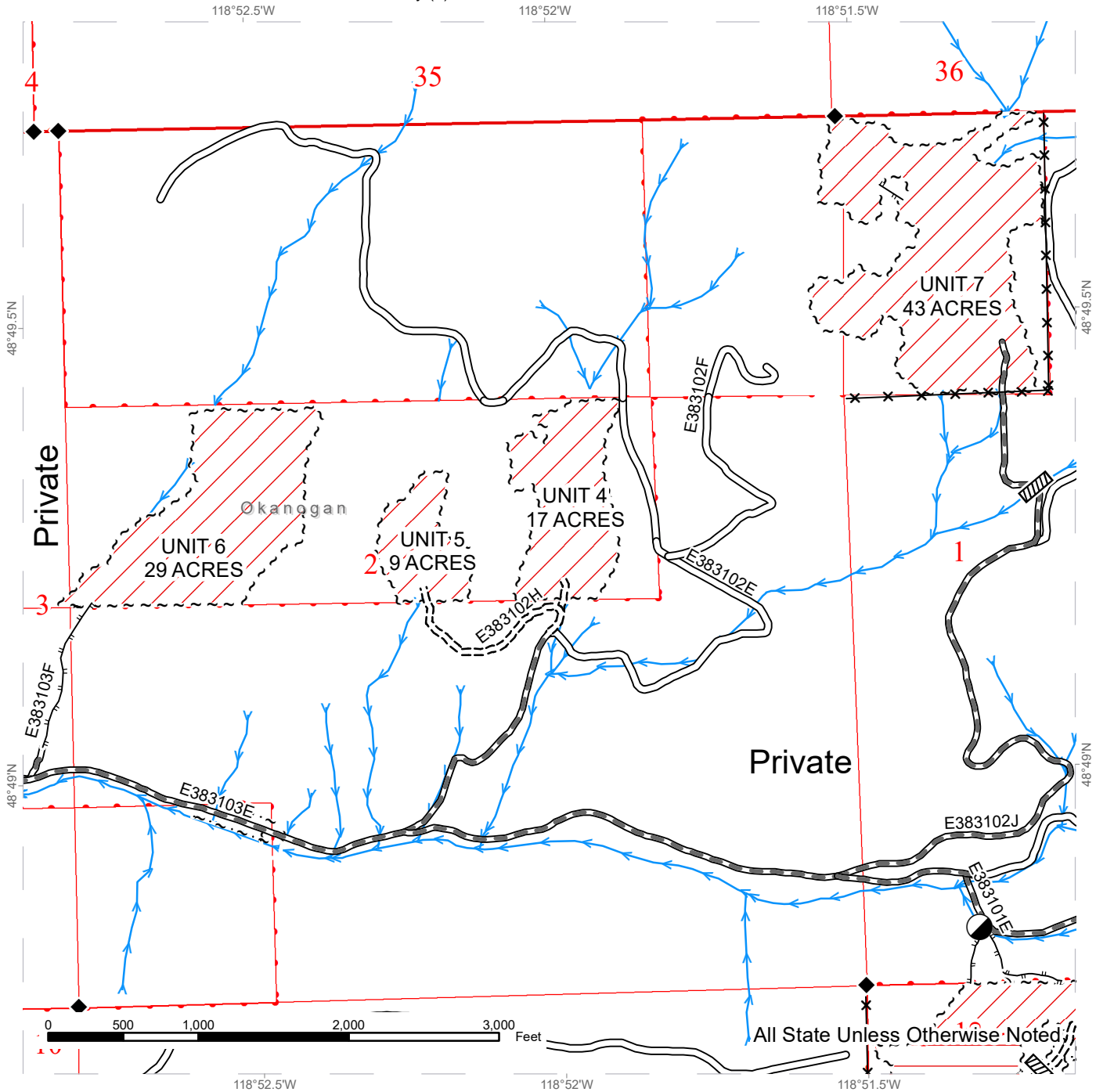
	Public Land Survey Sections		Existing Roads		Streams
	DNR Managed Lands		Required Pre-Haul Maintenance		Fence
	Ground Harvest		Required Construction		Survey Monument
	Recommended Cable-Assist		Designated Skid Trail		Culvert
	Sale Boundary Tags		Designated Landing		Gate
	Right of Way Tags = 1 Acre				



TIMBER SALE MAP

SALE NAME: Q HARVARD
AGREEMENT #: 30-101630
TOWNSHIP(S): T38R31E
TRUST(S): Common School and Indemnity (3)

REGION: Northeast Region
COUNTY(S): Okanogan
ELEVATION RGE: 3320-5000



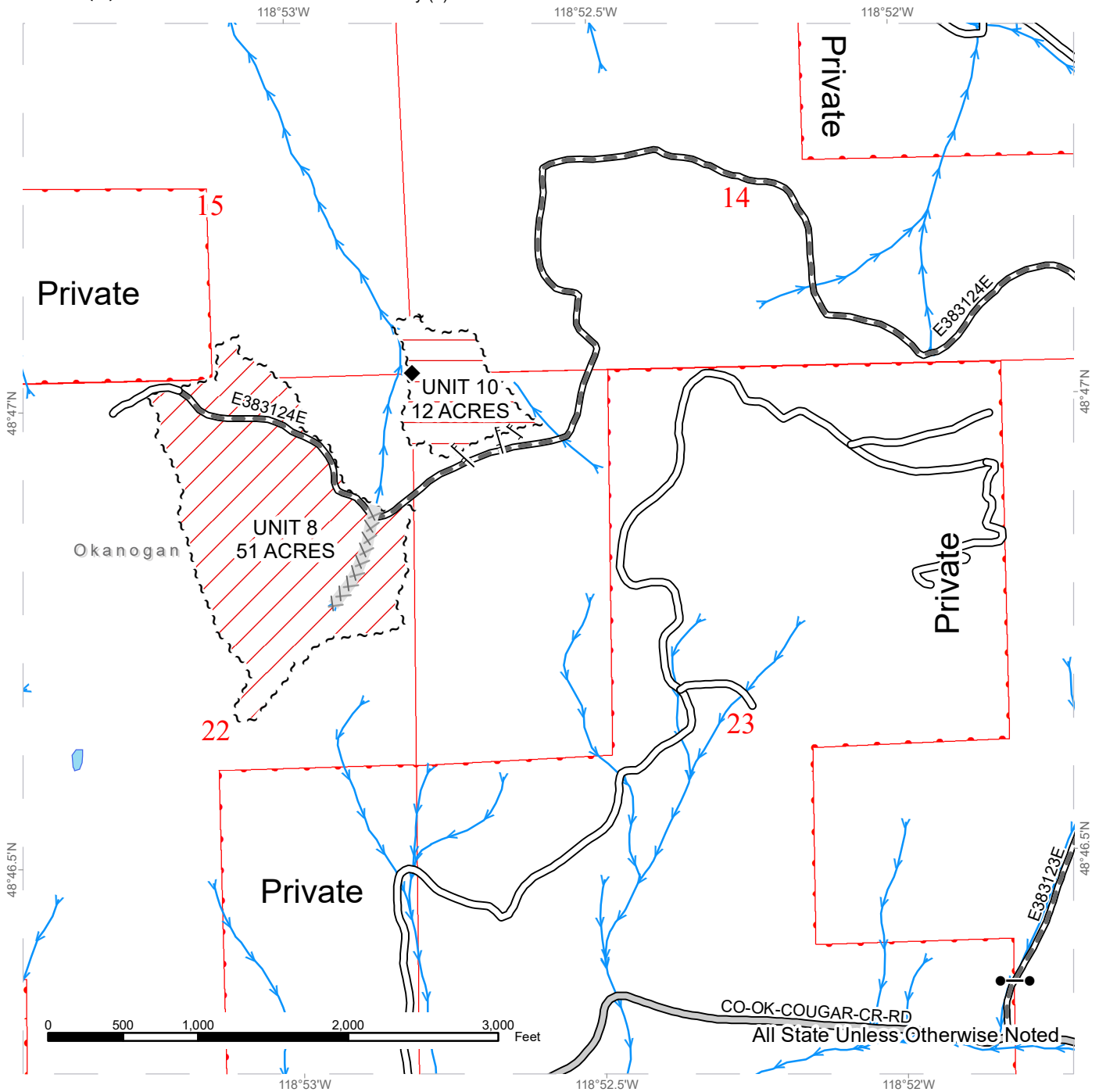
	Public Land Survey Sections		Existing Roads		Streams
	DNR Managed Lands		Required Pre-Haul Maintenance		Fence
	Ground Harvest		Required Construction		Survey Monument
	Recommended Cable-Assist		Designated Skid Trail		Culvert
	Sale Boundary Tags		Designated Landing		
	Right of Way Tags = 1 Acre				



TIMBER SALE MAP

SALE NAME: Q HARVARD
AGREEMENT #: 30-101630
TOWNSHIP(S): T38R31E
TRUST(S): Common School and Indemnity (3)

REGION: Northeast Region
COUNTY(S): Okanogan
ELEVATION RGE: 3320-5000

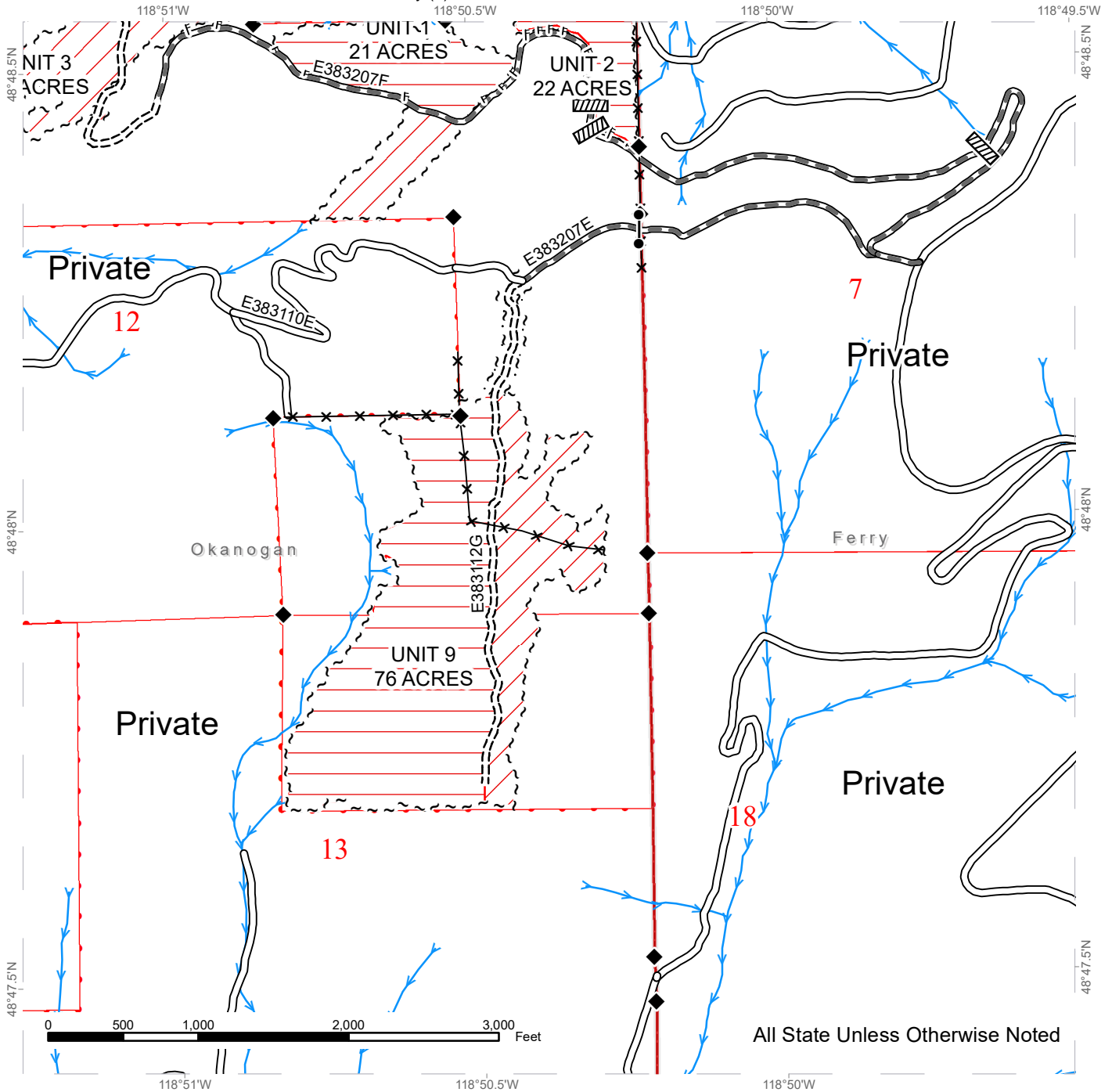


Public Land Survey Sections	County Road	Streams
DNR Managed Lands	Existing Roads	Survey Monument
Ground Harvest	Required Pre-Haul Maintenance	Gate
Recommended Cable-Assist	Designated Skid Trail	
Sale Boundary Tags	Equipment Limitation Zone	

TIMBER SALE MAP

SALE NAME: Q HARVARD
AGREEMENT #: 30-101630
TOWNSHIP(S): T38R31E
TRUST(S): Common School and Indemnity (3)

REGION: Northeast Region
COUNTY(S): Okanogan
ELEVATION RGE: 3320-5000



All State Unless Otherwise Noted

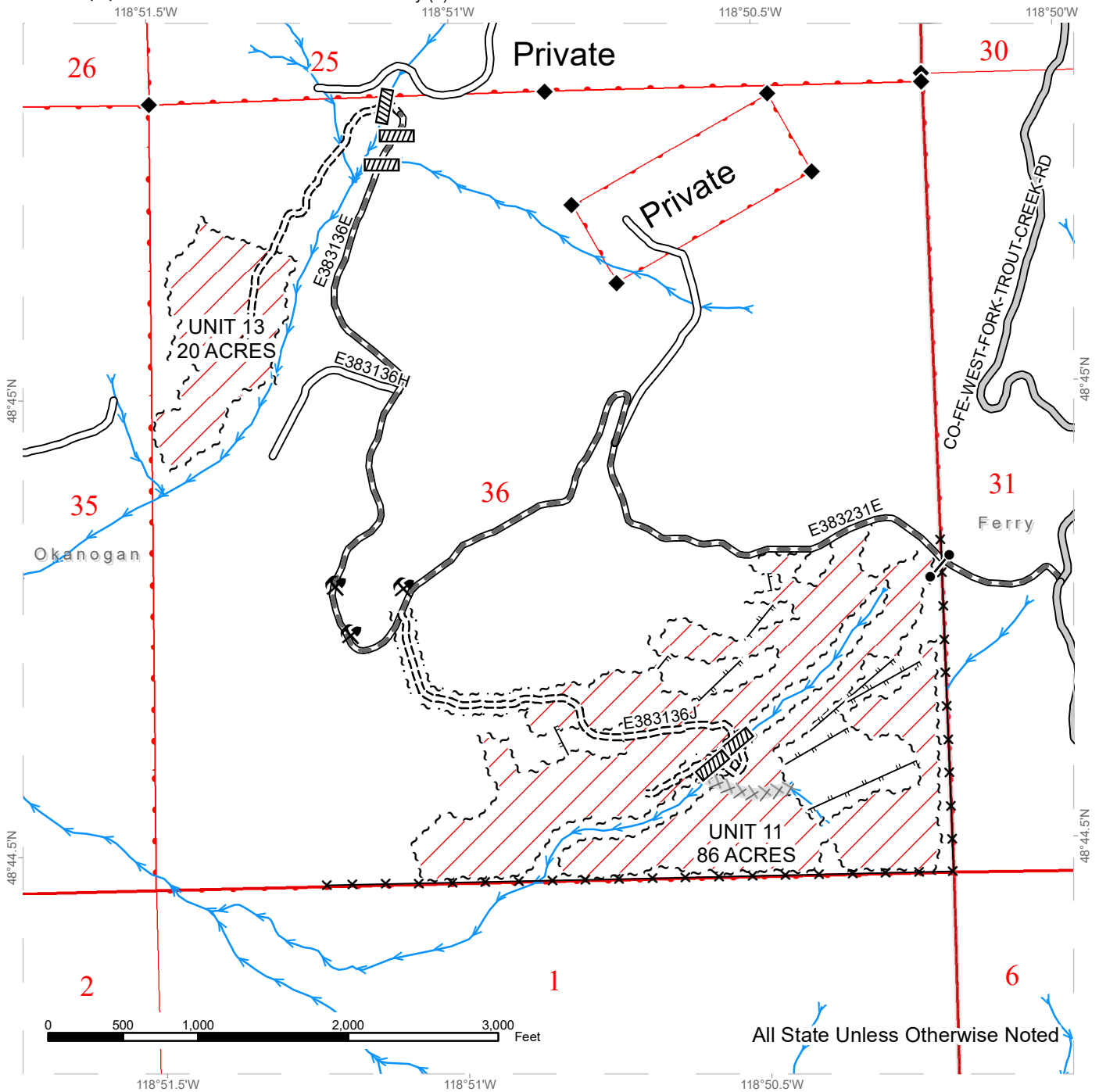
	Public Land Survey Sections		Existing Roads		Streams
	DNR Managed Lands		Required Pre-Haul Maintenance		Fence
	Ground Harvest		Required Construction		Survey Monument
	Recommended Cable-Assist		Designated Skid Trail		Culvert
	Sale Boundary Tags				Gate
	Right of Way Tags = 1 Acre				



TIMBER SALE MAP

SALE NAME: Q HARVARD
AGREEMENT #: 30-101630
TOWNSHIP(S): T38R31E
TRUST(S): Common School and Indemnity (3)

REGION: Northeast Region
COUNTY(S): Okanogan
ELEVATION RGE: 3320-5000



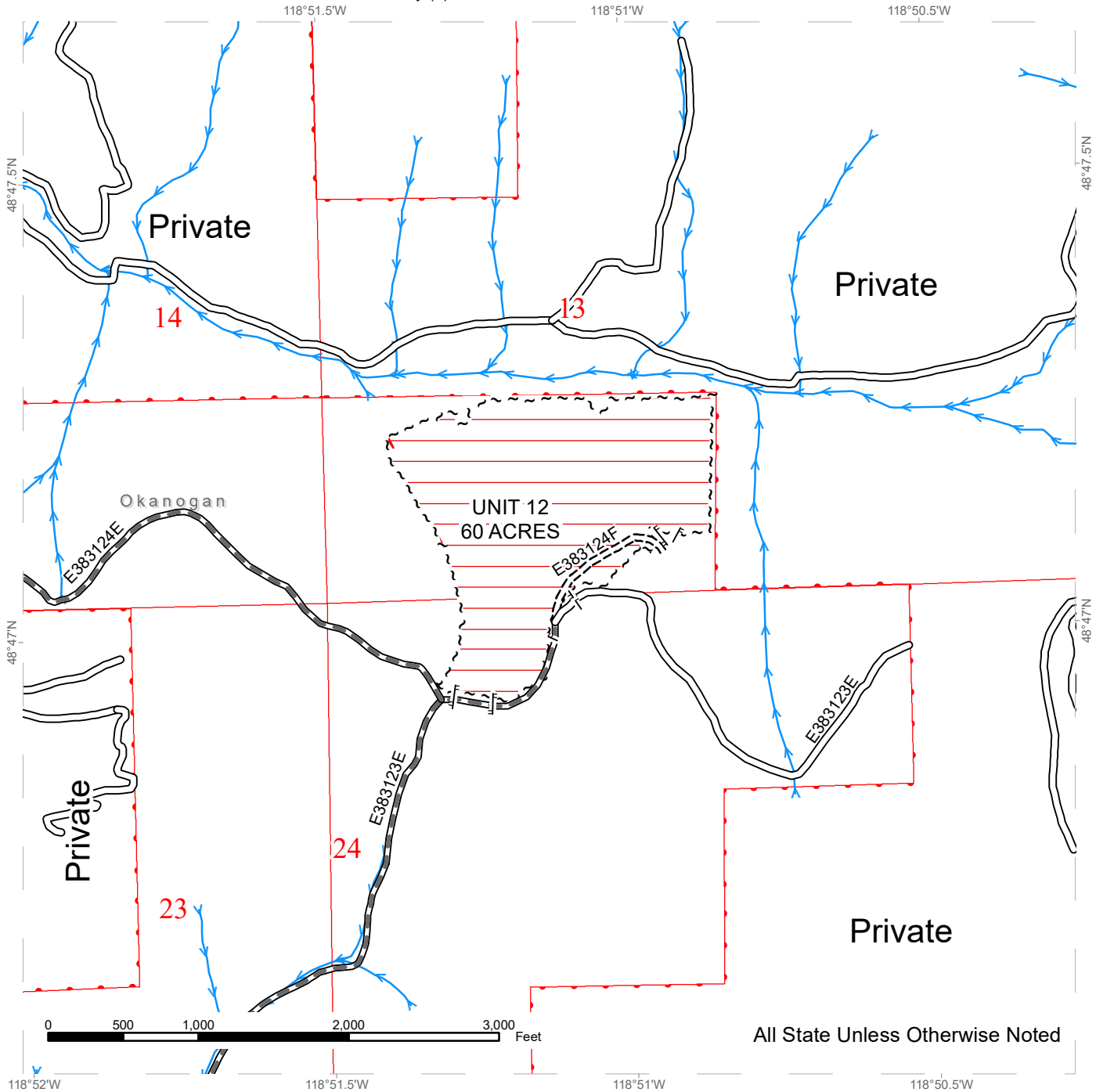
	Public Land Survey Sections		County Road		Streams
	DNR Managed Lands		Existing Roads		Fence
	Ground Harvest		Required Pre-Haul Maintenance		Survey Monument
	Sale Boundary Tags		Required Construction		Culvert
	Right of Way Tags = 1 Acre		Designated Skid Trail		Gate
			Equipment Limitation Zone		Rock Pit



TIMBER SALE MAP

SALE NAME: Q HARVARD
AGREEMENT #: 30-101630
TOWNSHIP(S): T38R31E
TRUST(S): Common School and Indemnity (3)

REGION: Northeast Region
COUNTY(S): Okanogan
ELEVATION RGE: 3320-5000



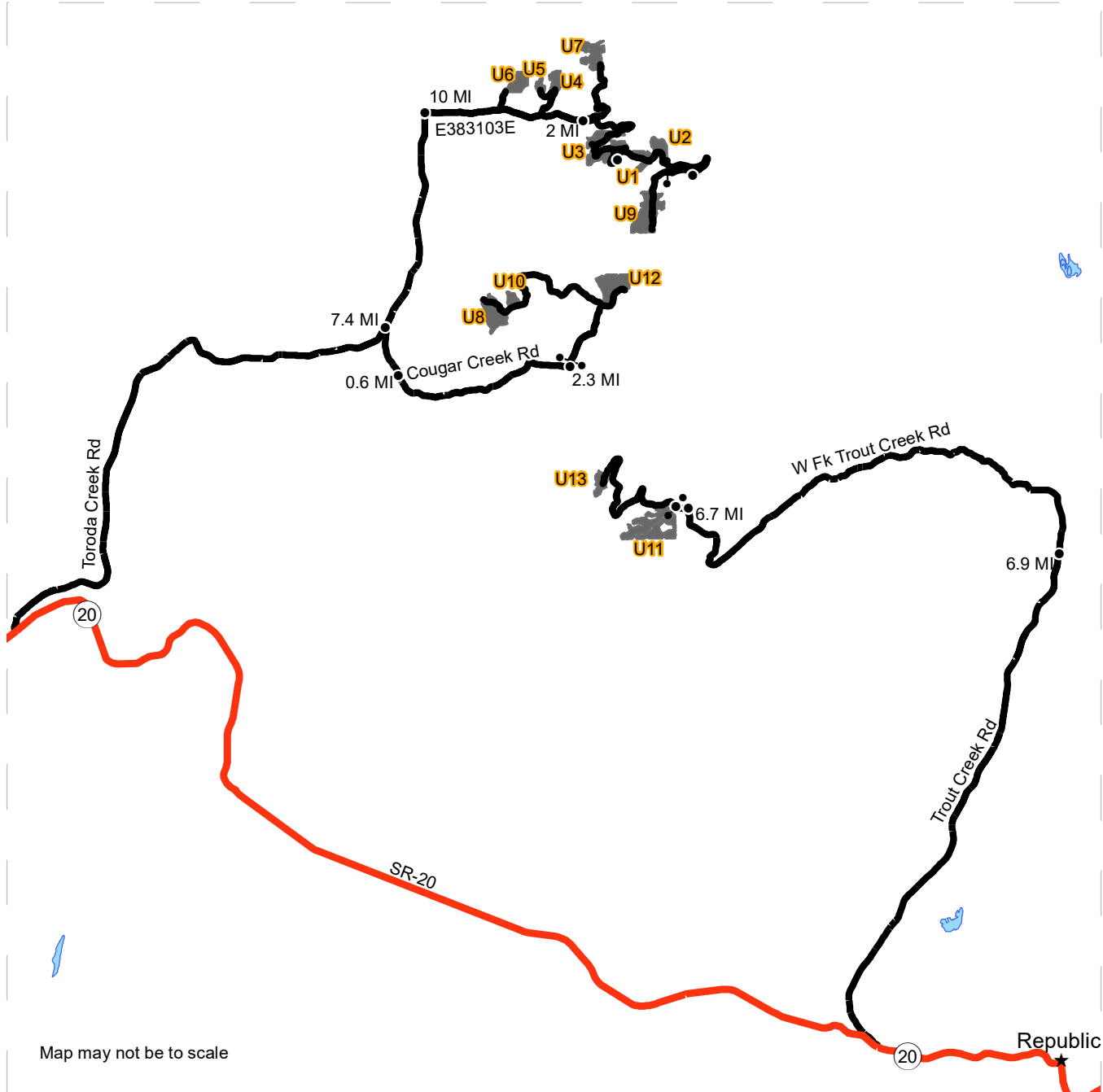
- | | | | | | |
|--|-----------------------------|--|-------------------------------|--|----------------------------|
| | Public Land Survey Sections | | Existing Roads | | Streams |
| | DNR Managed Lands | | Required Pre-Haul Maintenance | | |
| | Ground Harvest | | Required Construction | | Designated Skid Trail |
| | Recommended Cable-Assist | | Sale Boundary Tags | | Right of Way Tags = 1 Acre |



DRIVING MAP

SALE NAME: Q HARVARD
AGREEMENT#: 30-101630
TOWNSHIP(S): T38R31E
TRUST(S): Common School and Indemnity (3)

REGION: Northeast Region
COUNTY(S): Okanogan
ELEVATION RGE: 3320-5000



Map may not be to scale

- Timber Sale Unit
- Highway
- Haul Route
- Distance Indicator
- Gate

DRIVING DIRECTIONS:

Access units 1, 2, 3, 4, 5, 6, 7, 8, 9, 10, and 12 from Toroda Creek road via HWY 20. From the intersection of HWY 20 and Toroda Creek road travel north on Toroda Creek road for 7.4 miles and turn right onto Cougar creek. Continue on Cougar Creek road for 0.6 miles and turn slight left onto Sheridan Road. Continue south/southeast on Sheridan road for 2.3 miles and turn slight left onto E383112E (locked gate). Units 8, 10, and 12 are accessed from E383112E. Access units 1, 2, 3, 4, 5, 6, 7, and 9 from Toroda creek road via HWY 20. From the intersection of HWY 20 and Toroda creek road travel north/northeast 10 miles and turn right onto E383103E. From E283103E, units 1-7 are accessed off E383103F, E383102E, E383102J, and E383101E. To access unit 9 continue on E383101E road for 1.2 miles then E383101E turns into E383207F. Continue for 1.6 miles then turn right onto E383207E road to unit 9. Access units 11 and 13 from Trout Creek road via HWY 20. From the intersection of HWY 20 and Trout Creek road travel north for 6.9 miles and turn left onto West Fork Trout Creek road. Continue north/northwest for 6.7 miles then turn left onto FS road 2143986. Continue for 0.18 miles to E383231E (locked gate) and access units 11 and 13 from this road.



DRIVING MAP

SALE NAME: Q HARVARD
AGREEMENT#: 30-101630
TOWNSHIP(S): T38R31E
TRUST(S): Common School and Indemnity (3)

REGION: Northeast Region
COUNTY(S): Okanogan
ELEVATION RGE: 3320-5000



Map may not be to scale

	Timber Sale Unit
	Haul Route
	Other Route
	Distance Indicator
	Gate

DRIVING DIRECTIONS:

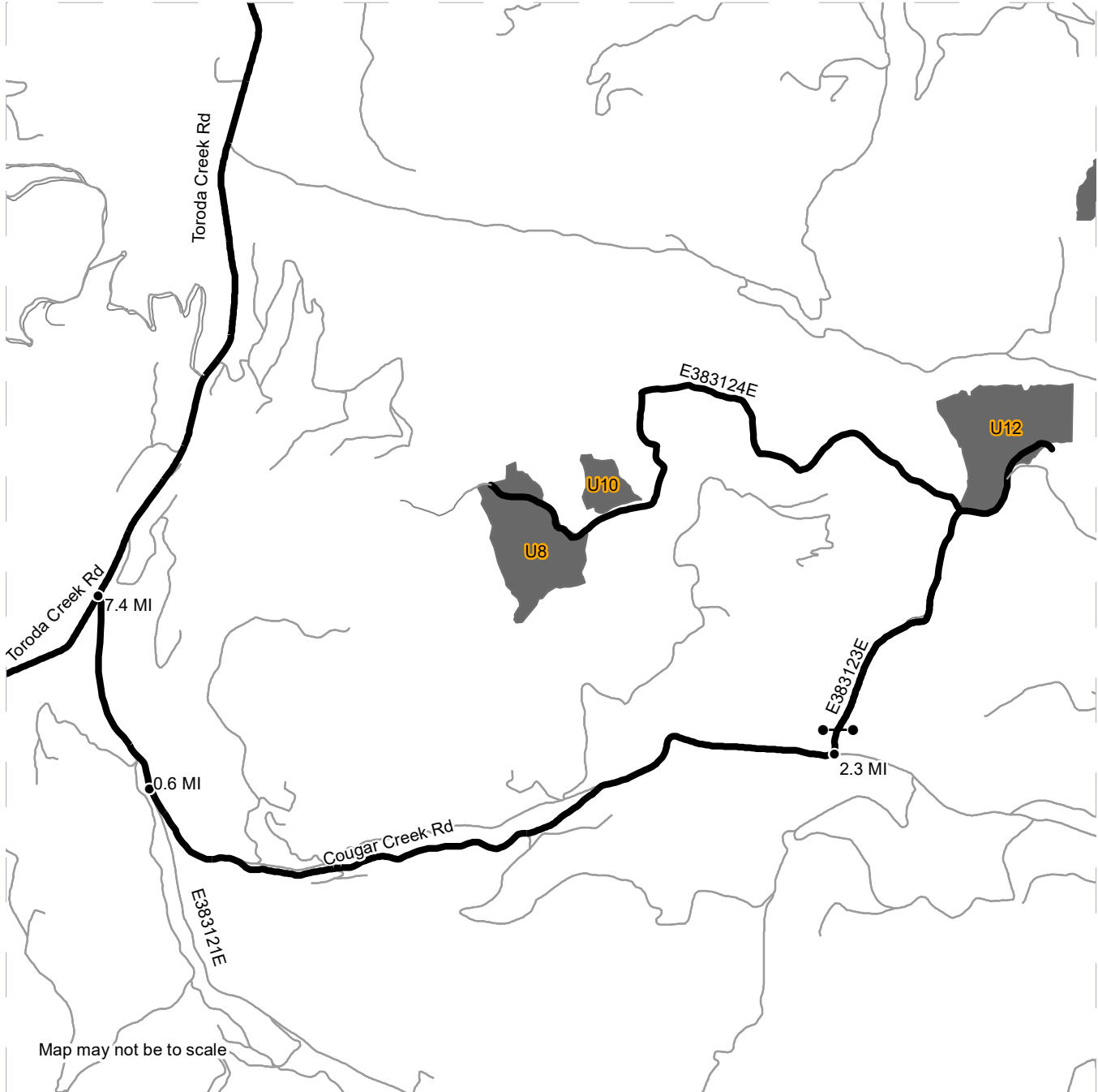
Access units 1, 2, 3, 4, 5, 6, 7, 8, 9, 10, and 12 from Toroda Creek road via HWY 20. From the intersection of HWY 20 and Toroda Creek road travel north on Toroda Creek road for 7.4 miles and turn right onto Cougar creek. Continue on Cougar Creek road for 0.6 miles and turn slight left onto Sheridan Road. Continue south/southeast on Sheridan road for 2.3 miles and turn slight left onto E383112E (locked gate). Units 8, 10, and 12 are accessed from E383112E. Access units 1, 2, 3, 4, 5, 6, 7, and 9 from Toroda creek road via HWY 20. From the intersection of HWY 20 and Toroda creek road travel north/northeast 10 miles and turn right onto E383103E. From E283103E, units 1-7 are accessed off E383103F, E383102E, E383102J, and E383101E. To access unit 9 continue on E383101E road for 1.2 miles then E383101E turns into E383207F. Continue for 1.6 miles then turn right onto E383207E road to unit 9. Access units 11 and 13 from Trout Creek road via HWY 20. From the intersection of HWY 20 and Trout Creek road travel north for 6.9 miles and turn left onto West Fork Trout Creek road. Continue north/northwest for 6.7 miles then turn left onto FS road 2143986. Continue for 0.18 miles to E383231E (locked gate) and access units 11 and 13 from this road.



DRIVING MAP

SALE NAME: Q HARVARD
AGREEMENT#: 30-101630
TOWNSHIP(S): T38R31E
TRUST(S): Common School and Indemnity (3)

REGION: Northeast Region
COUNTY(S): Okanogan
ELEVATION RGE: 3320-5000



Map may not be to scale

	Timber Sale Unit
	Haul Route
	Other Route
	Distance Indicator
	Gate

DRIVING DIRECTIONS:

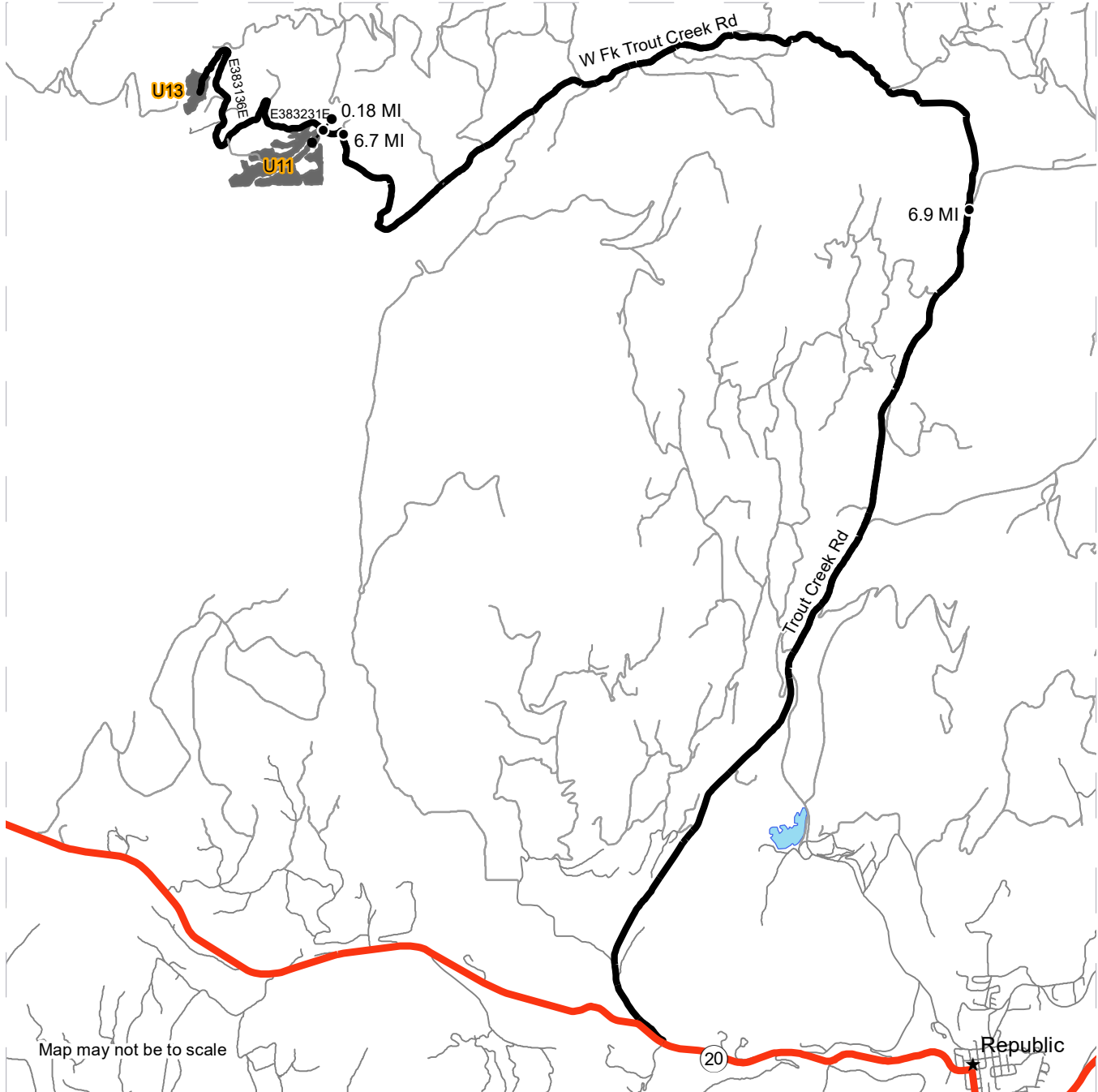
Access units 1, 2, 3, 4, 5, 6, 7, 8, 9, 10, and 12 from Toroda Creek road via HWY 20. From the intersection of HWY 20 and Toroda Creek road travel north on Toroda Creek road for 7.4 miles and turn right onto Cougar creek. Continue on Cougar Creek road for 0.6 miles and turn slight left onto Sheridan Road. Continue south/southeast on Sheridan road for 2.3 miles and turn slight left onto E383112E (locked gate). Units 8, 10, and 12 are accessed from E383112E. Access units 1, 2, 3, 4, 5, 6, 7, and 9 from Toroda creek road via HWY 20. From the intersection of HWY 20 and Toroda creek road travel north/northeast 10 miles and turn right onto E383103E. From E283103E, units 1-7 are accessed off E383103F, E383102E, E383102J, and E383101E. To access unit 9 continue on E383101E road for 1.2 miles then E383101E turns into E383207F. Continue for 1.6 miles then turn right onto E383207E road to unit 9. Access units 11 and 13 from Trout Creek road via HWY 20. From the intersection of HWY 20 and Trout Creek road travel north for 6.9 miles and turn left onto West Fork Trout Creek road. Continue north/northwest for 6.7 miles then turn left onto FS road 2143986. Continue for 0.18 miles to E383231E (locked gate) and access units 11 and 13 from this road.



DRIVING MAP

SALE NAME: Q HARVARD
AGREEMENT#: 30-101630
TOWNSHIP(S): T38R31E
TRUST(S): Common School and Indemnity (3)

REGION: Northeast Region
COUNTY(S): Okanogan
ELEVATION RGE: 3320-5000



Map may not be to scale

	Timber Sale Unit
	Highway
	Haul Route
	Other Route
	Town
	Distance Indicator
	Gate

DRIVING DIRECTIONS:

Access units 1, 2, 3, 4, 5, 6, 7, 8, 9, 10, and 12 from Toroda Creek road via HWY 20. From the intersection of HWY 20 and Toroda Creek road travel north on Toroda Creek road for 7.4 miles and turn right onto Cougar creek. Continue on Cougar Creek road for 0.6 miles and turn slight left onto Sheridan Road. Continue south/southeast on Sheridan road for 2.3 miles and turn slight left onto E383112E (locked gate). Units 8, 10, and 12 are accessed from E383112E. Access units 1, 2, 3, 4, 5, 6, 7, and 9 from Toroda creek road via HWY 20. From the intersection of HWY 20 and Toroda creek road travel north/northeast 10 miles and turn right onto E383103E. From E283103E, units 1-7 are accessed off E383103F, E383102E, E383102J, and E383101E. To access unit 9 continue on E383101E road for 1.2 miles then E383101E turns into E383207F. Continue for 1.6 miles then turn right onto E383207E road to unit 9. Access units 11 and 13 from Trout Creek road via HWY 20. From the intersection of HWY 20 and Trout Creek road travel north for 6.9 miles and turn left onto West Fork Trout Creek road. Continue north/northwest for 6.7 miles then turn left onto FS road 2143986. Continue for 0.18 miles to E383231E (locked gate) and access units 11 and 13 from this road.





TIMBER NOTICE OF SALE

SALE NAME: Q FIRECRACKER

AGREEMENT NO: 30-101610

AUCTION: August 24, 2021 starting at 10:00 a.m., Northeast Region Office, Colville, WA

COUNTY: Pend Oreille

SALE LOCATION: Sale located approximately 16 miles north of Usk, WA.

PRODUCTS SOLD AND SALE AREA:

All green conifer species except for leave trees banded with blue paint in Units 1, 2, 3a, 3b and 4 bounded by white timber sale boundary tags; all right of way timber banded with red paint and all right of way timber bounded by orange right of way boundary tags.

All forest products above located on part(s) of Sections 8, 9, 16 and 17 all in Township 35 North, Range 44 East, W.M., containing 259 acres, more or less.

CERTIFICATION: This sale is certified under the Sustainable Forestry Initiative® program Standard (cert no: PwC-SFIFM-513)

ESTIMATED SALE VOLUMES AND QUALITY:

Table with columns: Species, Avg DBH, Ring Count, Total MBF, and MBF by Grade (P, SM, 1S, 2S, 3S, 4S, 5S, 6S, UT). Rows include Douglas fir, Red cedar, Larch, Grand fir, Lodgepole, Hemlock, Ponderosa pine, Spruce, and Sale Total.

MINIMUM BID: \$2,490,000.00

BID METHOD: Sealed Bids

PERFORMANCE SECURITY:

\$100,000.00

SALE TYPE: Lump Sum

EXPIRATION DATE: November 1, 2023

ALLOCATION: Export Restricted

BID DEPOSIT: \$249,000.00 or Bid Bond. Said deposit shall constitute an opening bid at the appraised price.

HARVEST METHOD: Rubber tired skidder, Dozer, and Ground based equipment. Falling and Yarding will not be permitted from February 15 to May 15 unless authorized in writing by the Contract Administrator in Units 1 and 2 due to spring break up and February 15 to June 15 unless authorized in writing by the State in Units 3 and 4 due to wildlife timing restrictions.

ROADS: 81.28 stations of required construction. 118.33 stations of required reconstruction. 338.30 stations of required prehaul maintenance. The hauling of forest products will not be permitted from February 15 to May 15 unless authorized in writing by the Contract



TIMBER NOTICE OF SALE

Administrator in Units 1 and 2 due to spring break up and February 15 to June 15 unless authorized in writing by the State in Units 3 and 4 due to wildlife timing restrictions.

ACREAGE DETERMINATION

CRUISE METHOD: Acreage determined using GPS methods. Acreage shown above is net harvest acres in harvest units. Ponderosa pine and western red cedar: 8.0 - 17.5 inches dbh has a minimum top of 5.6 inch dib. All other species: 7.0 - 17.5 inches dbh has minimum top of 4.6 inch dib. All species 17.6 inches and greater dbh have a minimum top dib of 40% of dob at 16 feet or a 6 inch top whichever is greater.

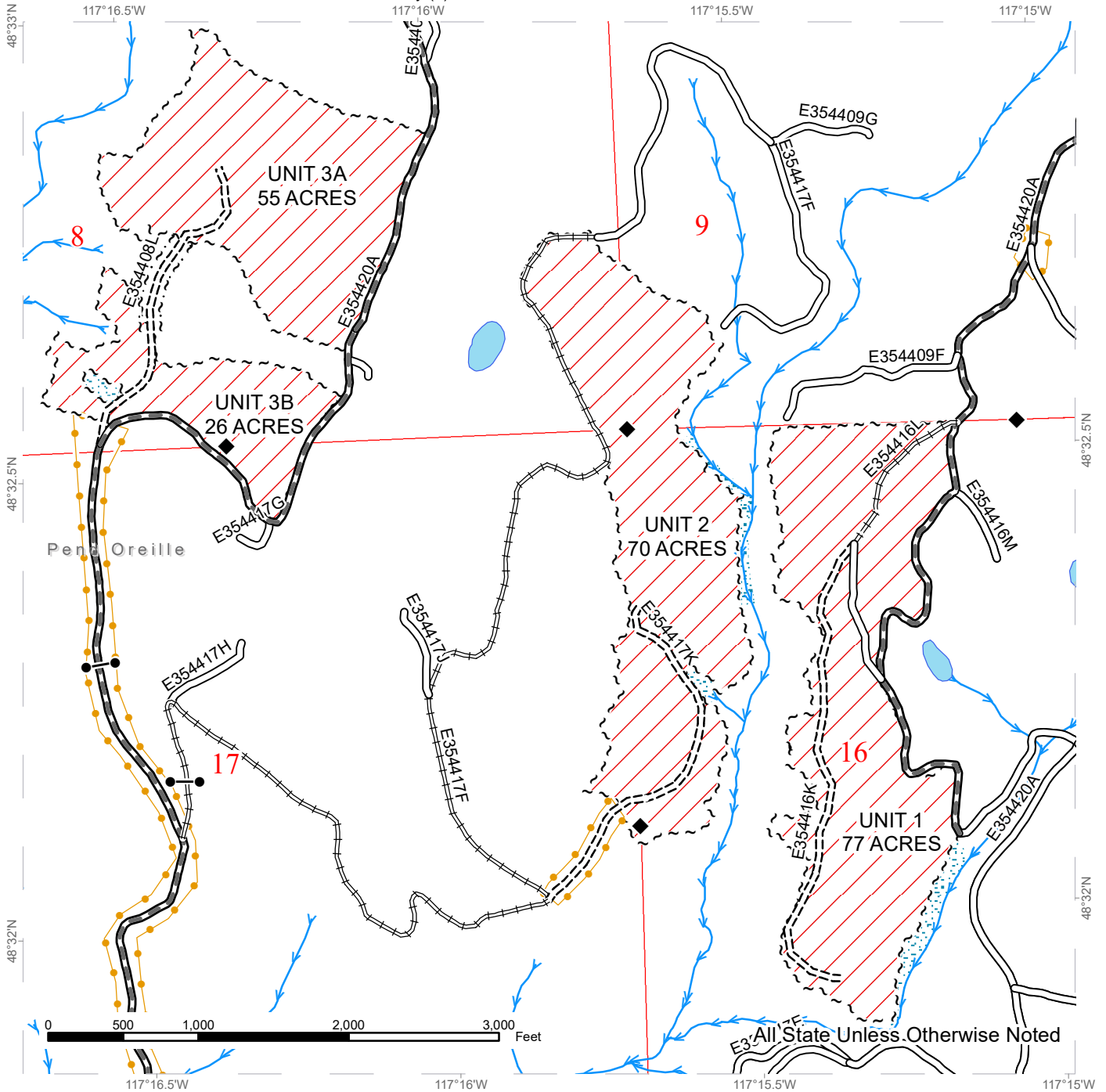
FEES: \$101,745.00 is due on day of sale. \$9.00 per MBF is due upon removal. These are in addition to the bid price.

SPECIAL REMARKS: No operations associated with timber harvest, hauling or road work in Units 1,3a, 3b, 4 and construction of road E354408L will not be permitted from March 1 to August 1 or later if the known goshawk nest is active during the year of harvest. Locked gates restricts access to the sale area. Contact the Northeast Region Office at (509) 684-7474 for access.

TIMBER SALE MAP

SALE NAME: Q FIRECRACKER
AGREEMENT #: 30-101610
TOWNSHIP(S): T35R44E
TRUST(S): Common School and Indemnity (3)

REGION: Northeast Region
COUNTY(S): Pend Oreille
ELEVATION RGE: 2280-3080



All State Unless Otherwise Noted

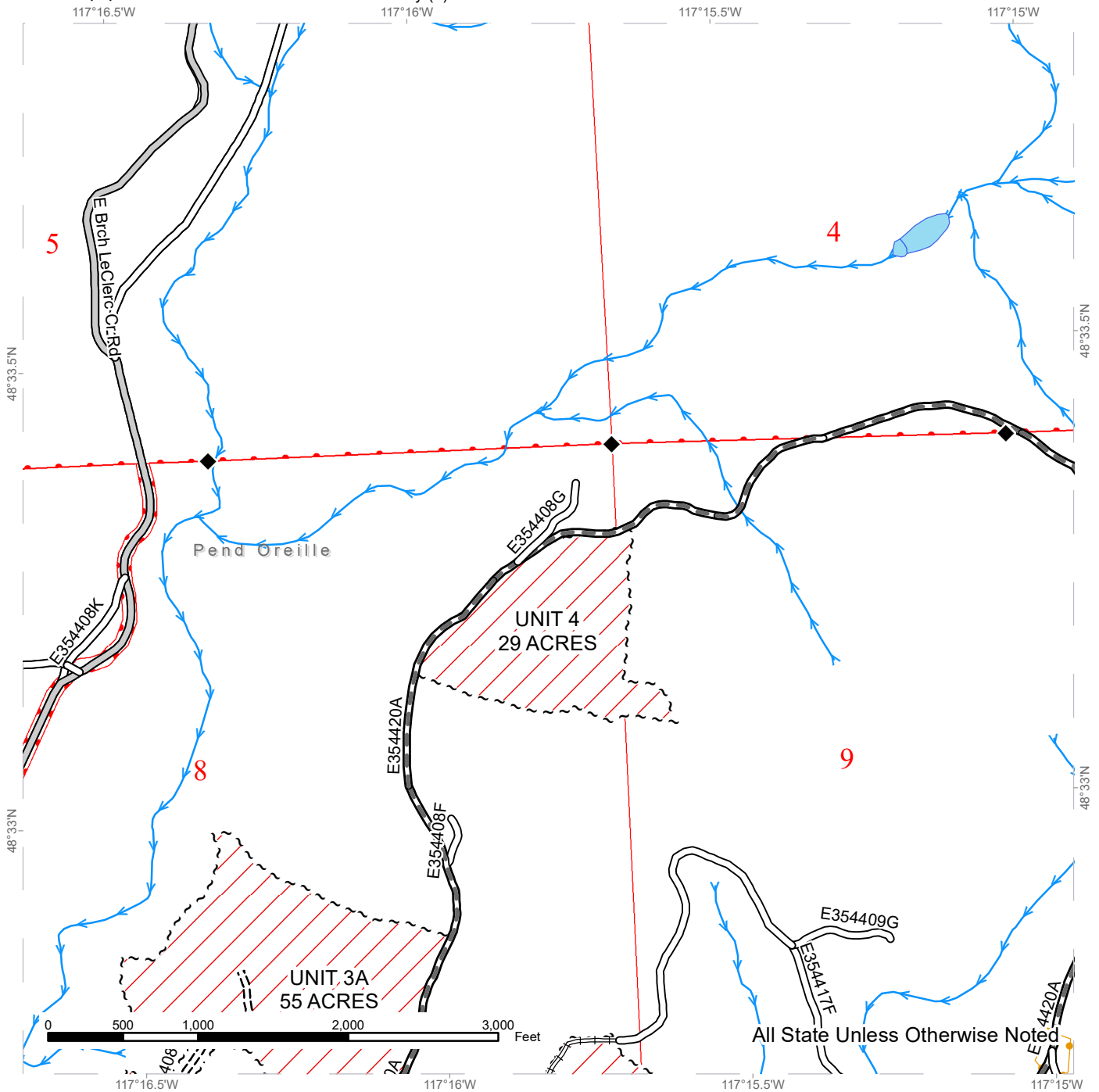
Public Land Survey Sections	Existing Roads	Streams
DNR Managed Lands	Required Pre-Haul Maintenance	Survey Monument
Variable Retention Harvest	Required Construction	Gate
Sale Boundary Tags	Required Reconstruction	Riparian Mgt Zone
Right of Way Tags		
Take / Removal Trees		

Right of Way Tags + Take/Removal Trees = 2 acres

TIMBER SALE MAP

SALE NAME: Q FIRECRACKER
AGREEMENT #: 30-101610
TOWNSHIP(S): T35R44E
TRUST(S): Common School and Indemnity (3)

REGION: Northeast Region
COUNTY(S): Pend Oreille
ELEVATION RGE: 2280-3080



All State Unless Otherwise Noted

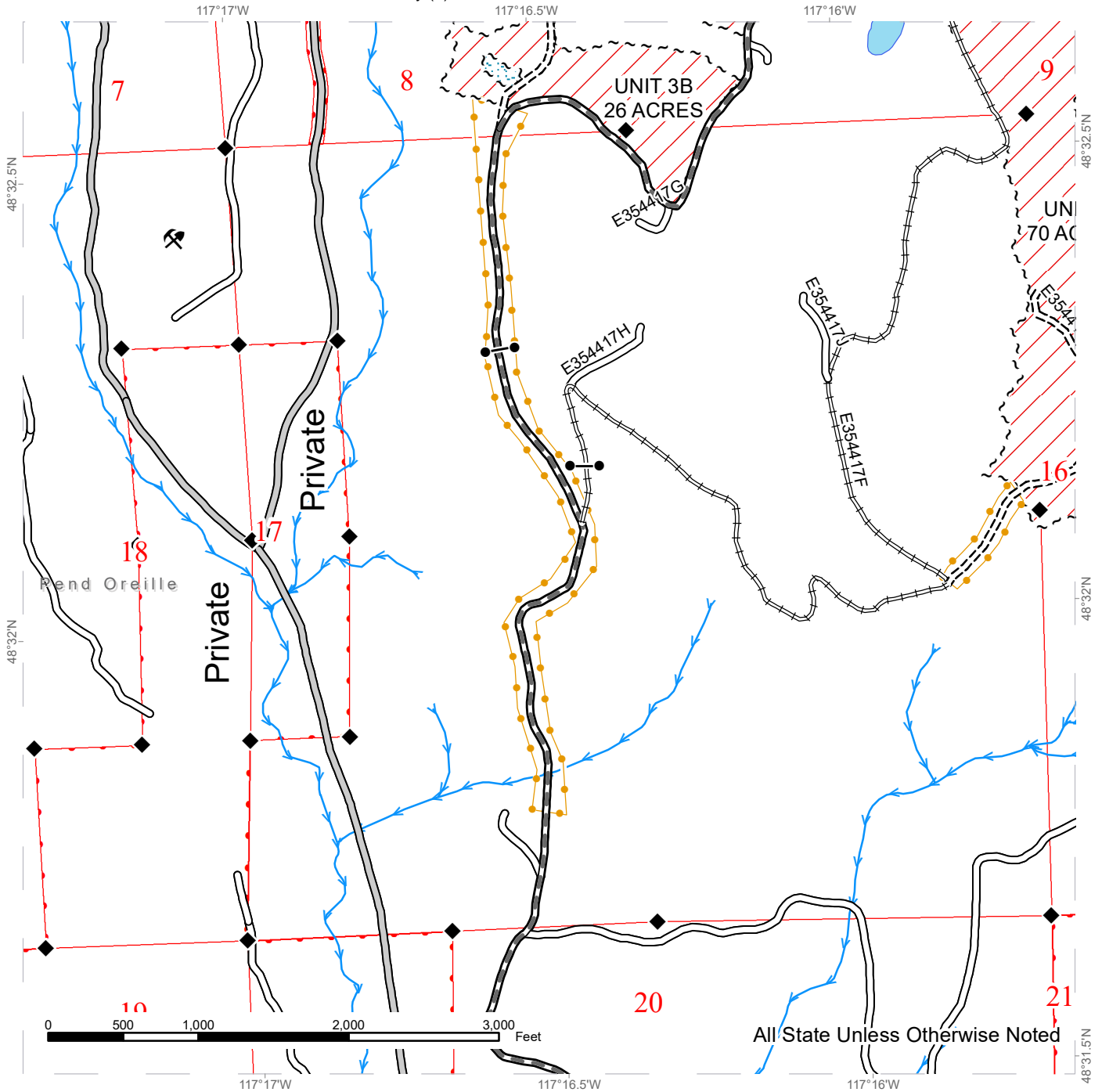
Public Land Survey Sections	County Road	Streams
DNR Managed Lands	Existing Roads	Survey Monument
Variable Retention Harvest	Required Pre-Haul Maintenance	
Sale Boundary Tags	Required Construction	
Right of Way Tags	Required Reconstruction	
Take / Removal Trees		

Right of Way Tags + Take/Removal Trees = 2 acres

TIMBER SALE MAP

SALE NAME: Q FIRECRACKER
AGREEMENT #: 30-101610
TOWNSHIP(S): T35R44E
TRUST(S): Common School and Indemnity (3)

REGION: Northeast Region
COUNTY(S): Pend Oreille
ELEVATION RGE: 2280-3080



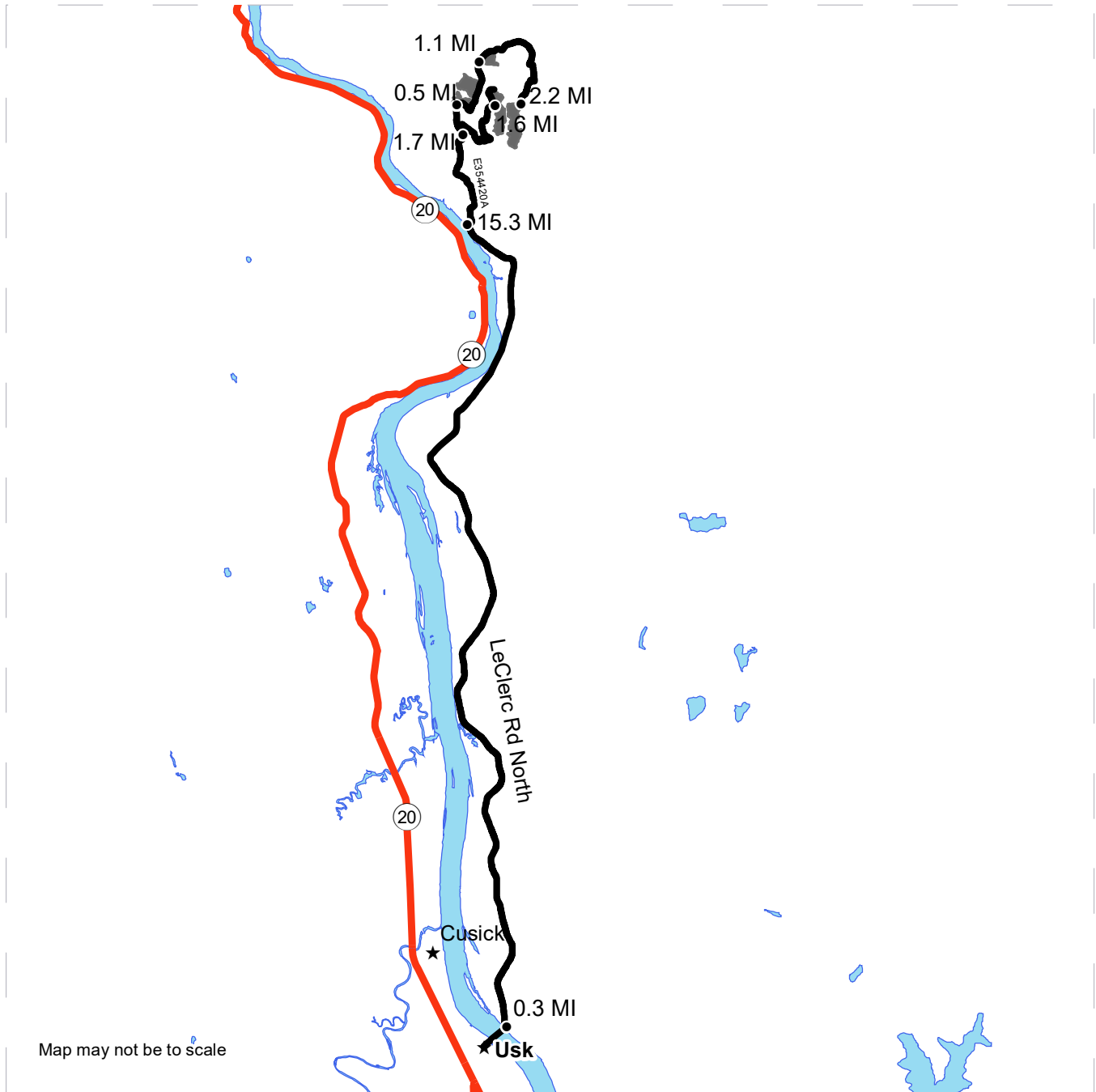
Public Land Survey Sections	County Road	Streams
DNR Managed Lands	Existing Roads	Survey Monument
Variable Retention Harvest	Required Pre-Haul Maintenance	Gate
Sale Boundary Tags	Required Construction	Riparian Mgt Zone
Take / Removal Trees	Required Reconstruction	



DRIVING MAP

SALE NAME: Q FIRECRACKER
AGREEMENT#: 30-101610
TOWNSHIP(S): T35R44E
TRUST(S): Common School and Indemnity (3)

REGION: Northeast Region
COUNTY(S): Pend Oreille
ELEVATION RGE: 2280-3080



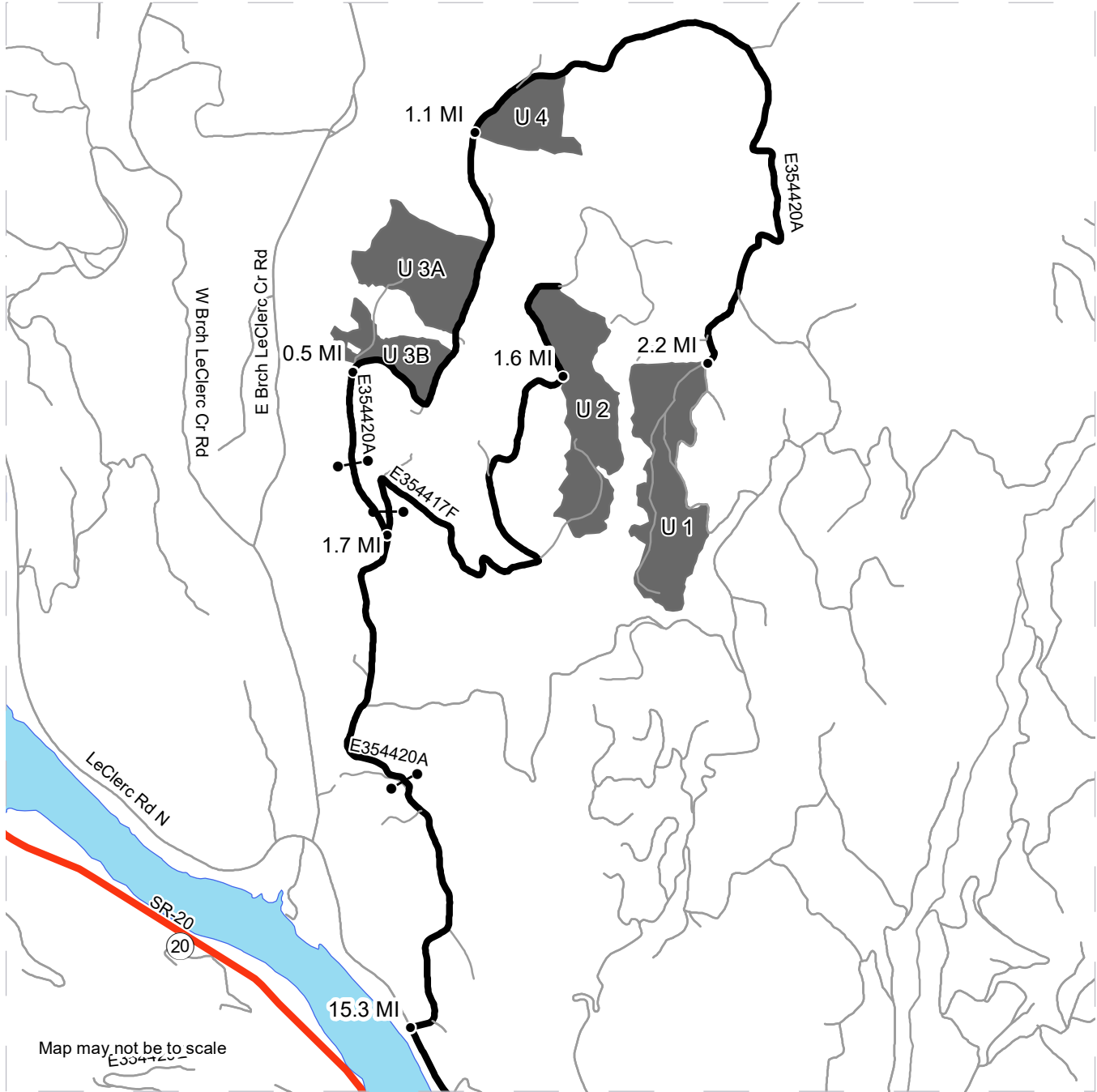
Map may not be to scale

<ul style="list-style-type: none"> Timber Sale Unit Haul Route Highway Town 	<p><u>DRIVING DIRECTIONS:</u></p> <p>From Usk, WA travel east on Kings Lake Road for 0.3 miles. Turn left on North LeClerc Road and travel north for 15.3 miles. Turn right onto the E354420A Road (1932 Road) and travel northeast for 1.7 miles to the intersection of the E354417F Road.</p> <p>To Units 3, 4, and 1: From the E354420A and E354417F intersection: Continue traveling north on the E354420A road for 0.5 miles to arrive at Unit 3. Unit 3 will be located on the left hand side. To Unit 4 continue from Unit 3 on the E354420A road traveling north for 1.1 miles to arrive at Unit 4. Unit 4 will be located on the right hand side of the road. To Unit 1 from Unit 4 continue traveling northeast on the E354420A Road for 2.2 miles to arrive at Unit 1. Unit 1 will be located on the right hand side.</p> <p>To Unit 2: From the E354420A and E354417F intersection: Turn right on the E454417F Road and travel northeast for 1.6 miles to arrive at Unit 2. Unit 2 will be located on the right hand side.</p>
--	---

DRIVING MAP

SALE NAME: Q FIRECRACKER
AGREEMENT#: 30-101610
TOWNSHIP(S): T35R44E
TRUST(S): Common School and Indemnity (3)

REGION: Northeast Region
COUNTY(S): Pend Oreille
ELEVATION RGE: 2280-3080



Map may not be to scale

<ul style="list-style-type: none"> Timber Sale Unit Haul Route Other Route Highway Distance Indicator Gate 	<p><u>DRIVING DIRECTIONS:</u></p> <p>From Usk, WA travel east on Kings Lake Road for 0.3 miles. Turn left on North LeClerc Road and travel north for 15.3 miles. Turn right onto the E354420A Road (1932 Road) and travel northeast for 1.7 miles to the intersection of the E354417F Road.</p> <p>To Units 3, 4, and 1: From the E354420A and E354417F intersection: Continue traveling north on the E354420A road for 0.5 miles to arrive at Unit 3. Unit 3 will be located on the left hand side. To Unit 4 continue from Unit 3 on the E354420A road traveling north for 1.1 miles to arrive at Unit 4. Unit 4 will be located on the right hand side of the road.</p> <p>To Unit 1 from Unit 4 continue traveling northeast on the E354420A Road for 2.2 miles to arrive at Unit 1. Unit 1 will be located on the right hand side.</p> <p>To Unit 2: From the E354420A and E354417F intersection: Turn right on the E454417F Road and travel northeast for 1.6 miles to arrive at Unit 2. Unit 2 will be located on the right hand side.</p>
---	--





TIMBER NOTICE OF SALE

SALE NAME: CECIL VDT

AGREEMENT NO: 30-100424

AUCTION: August 25, 2021 starting at 10:00 a.m., COUNTY: Skagit Northwest Region Office, Sedro Woolley, WA

SALE LOCATION: Sale located approximately 17 miles east of Sedro-Woolley

PRODUCTS SOLD AND SALE AREA: All timber as described for removal in Schedule B bounded by white timber sale boundary tags, and the MJ-2226 and MJ-22 roads, except cedar salvage (cedar snags, preexisting dead and down cedar trees and cedar logs), in Unit #1.

All timber bounded by orange right of way tags, except that title to the timber within the right of way tags of the optional construction road segments is not conveyed to the Purchaser unless the road segment is actually constructed, except as described for removal in Schedule B.

All forest products above located on part(s) of Sections 25 all in Township 36 North, Range 6 East, Sections 30 all in Township 36 North, Range 7 East, W.M., containing 250 acres, more or less.

CERTIFICATION: This sale is certified under the Sustainable Forestry Initiative® program Standard (cert no: PwC-SFIFM-513)

ESTIMATED SALE VOLUMES AND QUALITY:

Table with columns: Species, Avg Ring DBH Count, Total MBF, Total \$/MBF, and MBF by Grade (1P, 2P, 3P, SM, 1S, 2S, 3S, 4S, UT). Rows include Hemlock, Douglas fir, Red cedar, Red alder, Silver fir, Cottonwood, and Sale Total.

MINIMUM BID: \$286/MBF (est. value \$1,068,000.00) BID METHOD: Sealed Bids

PERFORMANCE SECURITY: \$100,000.00 SALE TYPE: MBF Scale

EXPIRATION DATE: March 31, 2025 ALLOCATION: Export Restricted

BIDDABLE SPECIES: Douglas fir

BID DEPOSIT: \$106,800.00 or Bid Bond. Said deposit shall constitute an opening bid at the appraised price.

HARVEST METHOD: Cable; shovel, tracked skidder (See below for restrictions) on sustained slopes 40% or less; self-leveling equipment on sustained slopes 55% or less; tethered equipment may be utilized (See below for restrictions); also, a feller-buncher may be utilized on sustained slopes 40% or less.



TIMBER NOTICE OF SALE

Falling and yarding shall not be permitted during the bark slippage season unless the Purchaser provides a written plan outlining mitigation measures and the plan is pre-authorized in writing by the Contract Administrator. This season is estimated to run from April 1 to July 15 but may vary depending on weather conditions.

Purchaser must obtain prior written approval from the Contract Administrator for areas as to where to utilize tethered equipment prior to use. Trees may be felled and pre-bunched by the equipment but must be yarded by cable, if authorized by the Contract Administrator. If ground disturbance is causing excessive damage, as determined by the Contract Administrator, the equipment will no longer be authorized.

Purchaser must obtain prior written approval from the Contract Administrator for areas as to where to utilize tracked skidder equipment prior to use. Falling and Yarding will not be permitted from November 1 to March 31 unless authorized in writing by the Contract Administrator (THIS PERTAINS TO GROUND-BASED EQUIPMENT ONLY) to reduce soil damage and erosion.

ROADS:

79.30 stations of required construction. 61.16 stations of optional construction. 187.52 stations of required prehaul maintenance. 61.16 stations of abandonment, if built.

Rock may be obtained from the following source(s) on State land at no charge to the Purchaser: Section 2 Pit at station 20+86 of the MJ-03 Road. Rally Rock Pit at Station 79+80 of the MU-22 Road.

Development of existing rock source will involve processing rock to generate riprap, gravel pit run rock, and 1 ½-inch minus crushed rock.

An estimated total quantity of rock needed for this proposal: 408 cubic yards of riprap, 16,615 cubic yards of gravel pit run rock, and 1,895 cubic yards of 1 ½-inch minus crushed rock (including required stockpile).

Road work and the hauling of rock will not be permitted from November 1 to March 31 unless authorized in writing by the Contract Administrator to reduce soil damage and siltation. The hauling of forest products will not be permitted from November 1 to March 31 unless authorized in writing by the Contract Administrator to reduce soil damage and siltation.

ACREAGE DETERMINATION

CRUISE METHOD: Acres determined by GPS traverse. Cruise was conducted via variable plot sample type. See Cruise Narrative for further details. Shapefiles of units are available upon request after the BNR meeting in which the sale is presented.

FEES: \$72,913.00 is due on day of sale. \$9.00 per MBF is due upon removal. These are in addition to the bid price.

SPECIAL REMARKS:

1. HQ DF noted within the sale area.
2. Redcedar poles were noted within the sale area. See cruise for details.
3. Sample Scale - weight conversion sample scaling requests will be authorized for the following species: Douglas-fir (pure loads), and western hemlock (pure loads). See Schedule S for more details.

Schedule B
Thinning Prescription

THINNING PRESCRIPTION: UNIT 1 (VARIABLE DENSITY THINNING)

Thin to an average of 120 trees per acre by removing trees in the following order:

1. Cut all red alder and silver fir.
2. Cut western hemlock and Douglas-fir 10" – 18" dbh.
3. Cut western redcedar 16" – 20" dbh.

Do not remove any other tree species except within approved yarding corridors.

Yarding and skidding corridors shall be approved by the Contract Administrator (CA), sampled and included when calculating average trees per acre (TPA).

The CA will approve and certify in writing all persons engaged in felling of timber prior to any cutting operations, per the H-011 clause of the contract.

THINNING COMPLIANCE

To ensure that the Purchaser is in compliance with the unit prescription, the Purchaser shall measure sample plots across the landscape concurrently while felling timber in each unit. These plots shall be pre-determined, with approval by the Contract Administrator, on a grid covering each unit to ensure random and unbiased plot locations.

At each plot location, stand parameters will be measured using a fixed plot and a variable radius plot.

All compliance plots, as described above, will be marked in the field. The perimeter of the plot will be marked with fluorescent pink flagging. On each plot the count trees will be marked with a yellow band of paint. The Purchaser shall demonstrate, to the satisfaction of the CA, a working knowledge and ability to accurately measure and calculate TPA. The Purchaser shall submit compliance plot data to the CA at the following interval:

- after 10% of the unit has been cut and every 10% of the unit acreage thereafter.

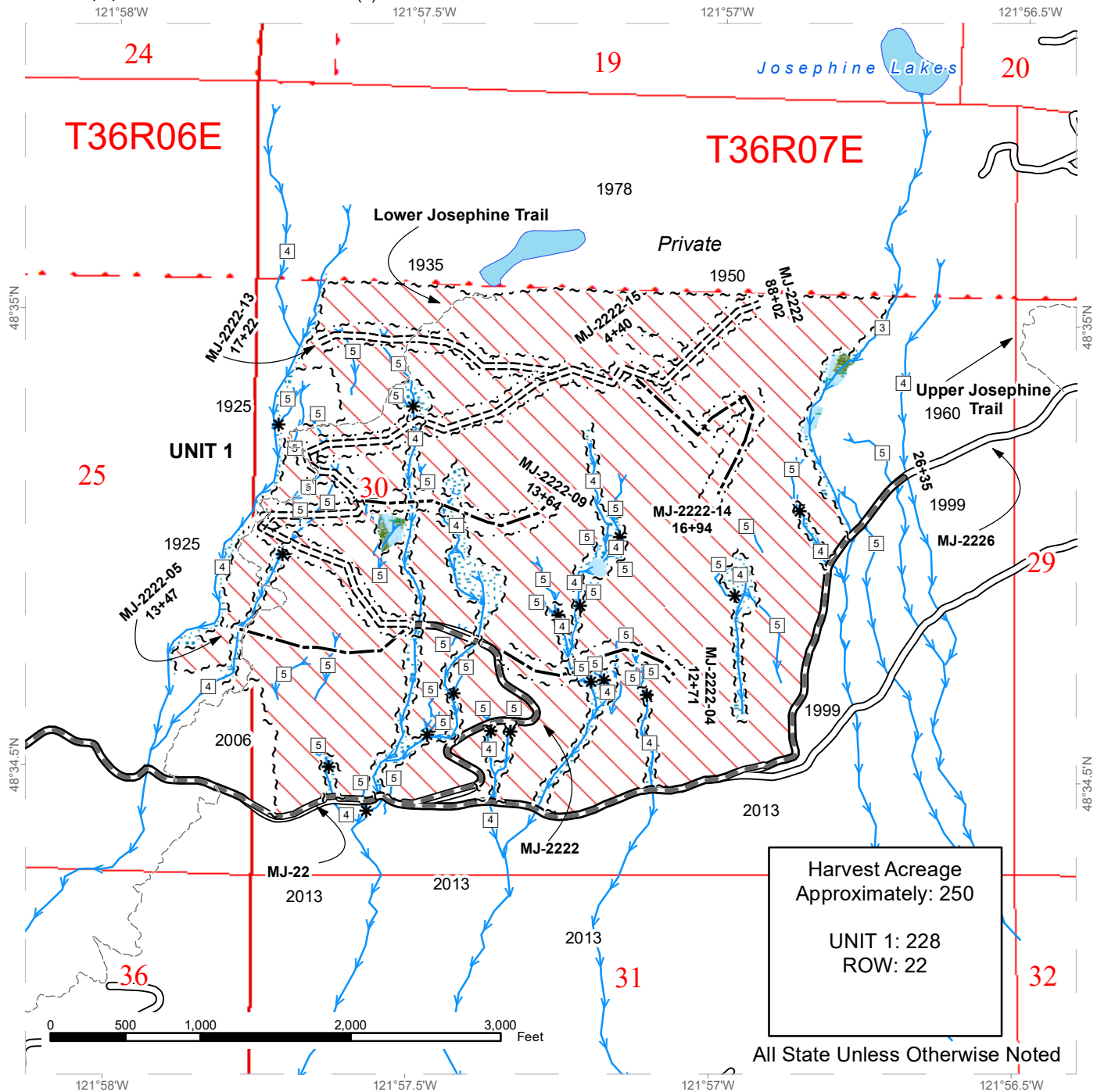
If the average plot data has fallen below the minimum residual basal area or trees per acre thresholds for a submitted 10% portion of the harvest area the Harvester shall stop harvest activities until a recertification of fallers can be done.

The Purchaser shall not deviate from the requirements set forth in the Compliance portion of this schedule without prior written approval by the CA.

TIMBER SALE MAP

SALE NAME: CECIL VDT
AGREEMENT #: 30-100424
TOWNSHIP(S): T36R06E, T36R07E
TRUST(S): State Forest Transfer (1)

REGION: Northwest Region
COUNTY(S): Skagit
ELEVATION RGE: 320-2880



Harvest Acreage
 Approximately: 250

 UNIT 1: 228
 ROW: 22

All State Unless Otherwise Noted

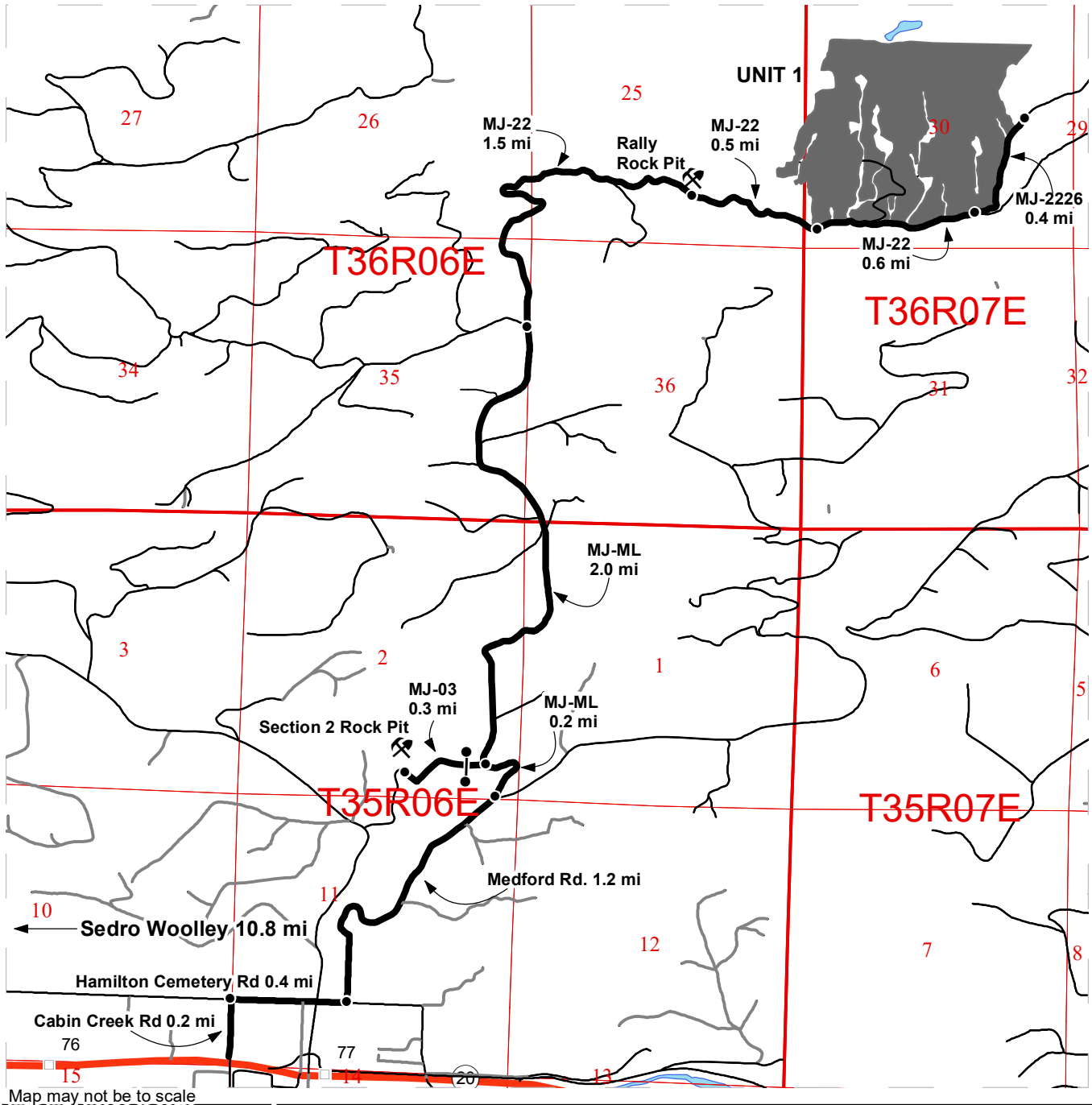
Variable Density Thinning	Existing Roads
Sale Boundary Tags	Required Pre-Haul Maintenance
Right of Way Tags	Required Construction
Riparian Mgt Zone	Optional Construction
Forested Wetland	Recreation Trails
Stream Type	Streams
Stream Type Break	Lakes

Not all streams may
 be visible on this map.
 See Water Type Mod map.

DRIVING MAP

SALE NAME: CECIL VDT
AGREEMENT#: 30-100424
TOWNSHIP(S): T36R6E, T36R7E
TRUST(S): State Forest Transfer (1)

REGION: Northwest Region
COUNTY(S): Skagit
ELEVATION RGE: 320-2880



Map may not be to scale

	Timber Sale Unit
	Haul Route
	Distance Indicator
	Gate
	Rock Pit
	Highway
	Milepost Markers

DRIVING DIRECTIONS:

From Sedro-Woolley, travel east on Hwy 20 for approx. 10.8 miles to Cabin Creek Rd. Turn left on Cabin Creek Rd. and continue 0.2 mi, turn right on Hamilton Cemetery Rd. and continue for 0.4 mi then turn left onto Medford Rd. continue for 1.2 mi and turn left off the pavement onto the MJ-ML, Continue for 0.2 miles. To reach the Section 2 rock pit; continue left at the fork past the gate for 0.3 mi on the MJ-03. To continue to the units; veer right on the MJ-ML for 2.0 mi, continue straight onto the MJ-22 for 1.5 mi to the Rally rock pit. Continue on the MJ-22 for 0.5 mi, Unit 1A will be on the left. Continue on the MJ-22 for 0.6 mi, veer left onto the MJ-2226 and continue for 0.4 mi to access the eastern portion of 1A.



**State of Washington
Department of Natural Resources**

SEALED BID FORM

Sale Name _____ Agreement Number _____

_____ hereby submits the following bid for timber.
(Print full, legal company name)

(Street address, City, State, Zip Code)

(Phone Number)

Lump Sum Bid (Not Including Fees) \$ _____ **For Total Sale**

Weight Scale Sale Bid (Not Including Fees) \$ _____ / **Ton**

Scribner Scale Sale Bid (Not Including Fees) \$ _____ / **MBF For Biddable Species**

BID DEPOSIT

Bid Deposit Amount: \$ _____

Bid Deposit Type:

- Cash, certified check, cashiers check, or money order
- Per Sale Bid Bond
- Statewide Bid Bond, Number _____

Within 30 days of confirmation date the successful bidder agrees to furnish Performance Security acceptable to the State in the amount specified on the Notice of Sale. Performance Security must guarantee performance of all provisions of the contract and payment of any damages caused by operations under the contract or resulting from the successful bidders noncompliance with any rule or law.

Bidder's Warranty and Bid Signature

By signing and submitting this bid as an offer to purchase forest products from the State, the Bidder hereby warrants to the State that they have had an opportunity to fully inspect the sale area and the forest products being sold. Bidder further warrants to the State that they enter this bid based upon their own judgments of the value of the forest products, formed after their own examination and inspection of both the timber sale area and the forest products being sold. Bidder also warrants to the State that they enter this bid without any reliance upon the volume estimates, acreage, appraisals, pre-bid documentation, or any other representation by the Washington State Department of Natural Resources.

_____ Date _____
(Signature of Authorized Representative submitting this bid)

(Print name and title of Authorized Representative submitting this bid)

Note: all sales are subject to confirmation by the Commissioner of Public Lands (Refer 79.15.120)

Instructions For Completing Sealed Bid Form

All bids submitted for the purchase of forest products being sold by the Washington State Department of Natural Resources must have an original signature on behalf of the person or entity submitting the bid, and must be on the form provided in this booklet or a photocopy thereof. The DNR will not accept bids that are not signed, and will not accept bids that are not on the current, approved bid form. All appropriate blanks on bid form must be completed including the bid bond number if the bidder is relying upon a bid bond for bid deposit.

For more specific information, contact the appropriate region office.

In-Person Bids

- A. Sealed bids must be in auction box before 10:00 a.m. on the day of auction at the location specified in the Timber Notice of Sale.
 - B. Sealed bids must be submitted in an envelope with the name of the sale, the bidder's name and the contract number clearly written on the outside of the envelope. The full legal name and business address of the bidder must be inserted where indicated on the form, and must be on the bid bond and timber sale contract. The bid form must be signed by an authorized representative. When a bidder has more than one person authorized to bid, documentation of those persons with signature authority for bidding must accompany the bid or be on file at the region office. Sealed bid envelopes are available at all region offices. One bid per envelope.
 - C. Sealed bid envelopes **must** contain a completed bid form and a bid deposit.
 - D. Sealed bid envelopes **may** contain a check for the Initial Deposit amount and a check for fees.
-

Mailed Bids

- A. Bids that are mailed are required to have printed on the outside: "DO NOT OPEN UNTIL SALE DATE. SEALED BID ENCLOSED". The sealed bid envelope(s) will be enclosed inside the mailed-in envelope. Mailed bids must be submitted in an envelope with the name of the sale, the bidder's name and the agreement number clearly written on the outside of the envelope. The full legal name and business address of the bidder must be inserted where indicated on the form, and must be the same on the bid bond and timber sale contract. The Sealed Bid Form must be signed by an authorized representative. When a bidder has more than one person authorized to bid, documentation of those persons with signature authority for bidding must accompany the bid or be on file at the region office. Mail-in envelopes are available at all region offices. One bid per mailed-in envelope.
 - B. Bids that are mailed will be accepted up to 4:30 p.m. the last business day before the auction by the region office in which the sale is located. Bidders assume the risk for the method of delivery. The DNR assumes no responsibility for any delays caused by any delivery service.
 - C. Sealed bid envelopes **must** contain a completed bid form and a bid deposit.
 - D. Sealed bid envelopes **may** contain a check for the Initial Deposit amount and a check for fees.
-

Initial Deposit:

Lump Sum Sales - Initial Deposit must equal 10% of the total bid submitted.
(25% if the bidder is a defaulter as defined under WAC 332-140-300)

Weight Scale Sales - Initial Deposit must equal 10% of the bid per ton multiplied by the total sale estimated tonnage. (25% if the bidder is a defaulter as defined under WAC 332-140-300)

Scribner MBF Scale Sales - Initial Deposit must equal 10% of the bid per MBF multiplied by the total sale MBF. (25% if the bidder is a defaulter as defined under WAC 332-140-300)

**State of Washington
Department of Natural resources**

STATEWIDE BID BOND

Bond Number _____

_____ of _____,
(Principal's Name) (City, State)

hereinafter called PRINCIPAL, and _____ hereinafter called
SURETY,

a corporation organized under the laws of the State of _____, and authorized to transact surety business in the State of Washington, as SURETY, are held and firmly bound jointly and severally to the State of Washington, Department of Natural Resources, hereinafter called the STATE, in the sum of \$150,000.00 Dollars, lawful money of the United States of America. The PRINCIPAL binds itself, its heirs, executors, administrators, successors, and assigns, and the SURETY binds itself, its successors, and assigns, all jointly and severally.

This bond shall be governed by the laws of the State of Washington. In the event of a lawsuit involving this bond, a venue shall be proper only in Thurston County Superior Court.

Signed, sealed and dated this _____ day of _____, _____ .
(month) (year)

This statewide bid bond may be used for bidding between the following dates:

Starting:

Ending:

It Is Hereby Understood and Agreed:

If PRINCIPAL is an apparent high bidder, PRINCIPAL shall before 4:30 p.m ., on day of sale, pay to the STATE the amount of the initial deposit in the form of a certified check, cashier's check, bank draft, cash or money order, then this agreement shall be void for the sale on which the payment is made; otherwise, it will remain in force.

SURETY will make payment to the STATE within ten days after demand by the STATE if the PRINCIPAL shall fail to make timely payment as described above.

The SURETY may cancel this bond by sending a written notice to the STATE, not less than forty-five days before a cancellation date; liability shall terminate as to acts or omissions of the PRINCIPAL that occur after the cancellation date.

The PRINCIPAL and the SURETY executed this bond on the date first mentioned.

Principal: (Above named)

Signature: _____

Name: _____

Title: _____

Address: _____

City: _____
State & Zip Code

Surety: (Above named)

Signature: _____

Name: _____

Title: _____

Address: _____

City: _____
State & Zip Code

Surety: (Local Office of Authorized agent)

Signature: _____

Name: _____

Title: _____

Address: _____

City: _____
State & Zip Code

Notary or Company Seal in Space Above

Instructions for Completing Timber Sale Statewide Bid Bond

- A. This form is authorized for use as bid guaranty to qualify for bidding on Washington State Department of Natural Resources timber sales.
- B. The Statewide Bid Bond may be used as bid guaranty on more than one timber sale.
- C. The full legal name and business address of the PRINCIPAL must be inserted where indicated and must be the same as will appear on the bidding record and timber sale contract. The bond must be signed by an authorized person. Additionally, the name must be typed or printed below the signature and title must be shown.
- D. The full legal name and business address of the SURETY must be inserted where indicated. The bond must be signed by an authorized person. Additionally, the name must be typed or printed below the signature and the title must be shown.
- E. If the SURETY does not have a Washington State office or resident agent, but is authorized to transact surety business in the State of Washington as SURETY, it may leave this signature block blank.
- F. This form must be received by the Department of Natural Resources, Product Sales & Leasing Division, PO BOX 47016, Olympia, Washington, 98504-7016, ten days in advance of the auction.
- G. **The State reserves the right to reject *incomplete or incorrect* bid bond forms, making such forms unacceptable as bid guaranty.**

**State of Washington
Department of Natural Resources**

Timber Sale Per Sale Bid Bond

Bond Number _____

_____ of _____, hereinafter called PRINCIPAL, and _____, hereinafter called SURETY, a corporation organized under the laws of the State of _____ and authorized to transact surety business in the State of Washington, as SURETY, are held and firmly bound jointly and severally to the State of Washington, Department of Natural Resources, hereinafter called the STATE, in the sum of \$ _____ Dollars, lawful money of the United States of America. The PRINCIPAL binds itself, its heirs, executors, administrators, successors, and assigns, and the SURETY binds itself, its successors, and assigns, all jointly and severally.

This bond shall be governed by the laws of the State of Washington. In the event of a lawsuit involving this bond, venue shall be proper only in Thurston County Superior Court.

Signed, sealed, and dated this _____ day of _____, 20 _____.

BID IDENTIFICATION:

SALES NAME(S)	REQUIRED DEPOSIT	AGREEMENT NUMBER(S)

DATE OF BID: _____

It Is Hereby Understood and Agreed:

If PRINCIPAL is the high bidder on the sale(s) identified above and, within ten (10) days of the day of sale, transmits cash, certified check, cashier's check, bank draft or money order, payable to the STATE, in the amount of the bid guaranty required by the terms of the Notice of Sale, *then* this obligation shall be void; *otherwise*, it shall remain in force.

SURETY will make payment to the STATE within ten (10) days after demand by the STATE whenever the PRINCIPAL shall fail to make timely payment as described above.

IN WITNESS WHEREOF: the PRINCIPAL and the SURETY have caused this bond to be executed on the date first mentioned.

SECOND OFFICER:

Signature: _____

Name: _____

Title: _____

PRINCIPAL: (Above Named)

Signature: _____

Name: _____

Title: _____

SURETY: (Local Office of Authorized Agent)

Signature: _____

Name: _____

Title: _____

Address: _____

City: _____

State & Zip: _____

SURETY: (Above Named)

Signature: _____

Name: _____

Title: _____

Address: _____

City: _____

State & Zip _____

NOTARY OR COMPANY SEAL IN THE SPACE ABOVE

Instructions for Completing Timber Sale Per Sale(s) Bid Bond

- A. This form is authorized for use as bid guaranty to qualify for bidding on Washington State Department of Natural Resources timber sales.
- B. The Timber Sale Per Sale Bid Bond may be used as bid guaranty on more than one timber sale auction held the same date at the same location.
- C. The full legal name and business address of the PRINCIPAL must be the same as will appear on the bidding record and timber sale contract. The bond must be signed by an authorized person, the name typed or printed, and title shown. If PRINCIPAL is a corporation, a second officer must sign in the space to the left of the signature of the officer executing for the PRINCIPAL.
- D. The full legal name and business address of the SURETY must be inserted where indicated. The bond must be signed by an authorized person. Additionally, the name must be typed or printed below the signature and the title must be shown. If this person is not an officer of the corporation, evidence of authority must be submitted.
- E. If the SURETY does not have a Washington State office or resident agent, but is authorized to transact surety business in the State of Washington as Surety, it may leave the local office signature block blank.
- F. The date of the bid bond must not be later than the auction date.
- G. **The State reserves the right to reject incomplete or *incorrect* bid bond forms, making such forms unacceptable as guaranty.**

STATE OF WASHINGTON
DEPARTMENT OF NATURAL RESOURCES
LOG SORT SEALED BID FORM

Sale Name _____ Agreement Number _____ Date _____

_____ hereby submits the following bid for delivered logs.
(Print Company Name)

_____ Telephone Number _____
(Print Name Authorized Company Representative) (Contact for bid result notification)

(Street Address)

(City, State and Zip)

Agreement Number	Sort Number	<u>Delivered</u> Logs Bid Amount (fill in one only)	
		\$ /MBF	\$ /TON

Bid Deposit Amount \$ _____

- Bid Deposit Type:**
- Cash, Certified Check, Cashiers Check, or Money Order
 - Per Sale Bid Bond
 - Statewide Bid Bond, Number _____

The successful bidder agrees to furnish payment security acceptable to the State in the amount as described in clause P-041 of the Purchaser’s contract prior to log delivery and at a date to be determined by the State.

Bidder’s Warranty and Bid Signature

By signing and submitting this bid as offer to purchase forest products from the State, the Bidder hereby warrants to the State that they have had an opportunity to fully inspect the sale area and the forest products being sold. Bidder further warrants to the State that they enter this bid based solely upon their own judgment of the value of the forest products, formed after their own examination and inspection of both the timber sale area and the forest products being sold. Bidder also warrants to the State that they enter this bid without any reliance upon the volume estimates, acreage estimates, appraisals, pre-bid documentation, or any other representation by the State Department of Natural Resources.

(Signature of Authorized Representative submitting this bid)

(Date of Signature)

(Print name and title of Authorized Representative submitting this bid)

NOTES: A separate bid form is required for each log sort bid and must be delivered in a separate envelope. Photocopies of this bid form may be used. Each photocopy must have original signatures. Final contract award is contingent upon the State’s haul cost analysis. Actual haul route may vary and is subject to change at the State’s discretion. All sales are subject to confirmation by the Commissioner of Public Lands as per RCW 79.15.100.

LOG SORT SEALED BID SUPPLEMENTAL INFORMATION FORM

(Print Company Name)

(Sale Name)

(Agreement Number)

(Sort Number)

(email: optional for DNR production report distribution)

Log Manufacturing Specifications:

Sawlog and Peeler sorts: Enter at least one preferred log length including trim for each log length range below.

Pole sorts (Distribution): Enter three or more lengths. Attach preferred manufacturing information.

Pole sorts (Transmission): Enter six or more lengths. Attach preferred manufacturing information.

Tonnage sorts: See bid form instructions for required log lengths. Enter additional custom lengths as desired.

Log Length Ranges	Bidder's Preferred Log Lengths
16 ft. through 20 ft.	
22 ft. through 30 ft.	
32 ft. through 40 ft.	
Distribution Poles – 35 ft. through 55 ft.	
Transmission Poles – 60 ft.+	

Log Delivery Information:

1) Designate the point of delivery and address (must be a street address)

(Location Name)

(Street Address)

(City, State and Zip)

2) Designate the state approved Scaling and Weighing facilities closest to the point of delivery as needed.

Scaling Location Information

Weighing Location Information

(Scaling Location Name)

(Weighing Location Name)

(Third Party Scaling Organization)

(Weighing Location Owner)

(Scaling Location Street Address)

(Weighing Location Street Address)

(Scaling Location City, State and Zip)

(Weighing Location City, State and Zip)

Final contract award is contingent upon the State's haul cost analysis. Actual haul route may vary and is subject to change at the State's discretion. Additional terms or conditions requested by the bidder on or attached to the Log Sort Sealed Bid or Supplemental Information Forms are informational only and non-binding.

Instructions for Completing the Log Sort Sealed Bid and Supplemental Information Forms.

All bids submitted for the purchase of forest products being sold by the Washington State Department of Natural Resources must have an original signature on behalf of the person or entity submitting the bid, and must be on the form(s) provided in this booklet or a photocopy thereof. The DNR will not accept bids that are not signed, and will not accept bids that are not on the current, approved bid form. All appropriate blanks including Agreement Number, Sort Number, Bid amount (per mbf or ton as appropriate for the sort), Bid deposit amount and type. Signatures and date on bid form must be completed including the bid bond number if bidder is relying upon a bid bond for bid deposit.

Bids shall not be accepted if a completed '**Log Sort Sealed Bid Supplemental Information Form**' is not included with the approved '**Log Sort Sealed Bid Form**'.

Required log lengths for tonnage sorts: Preferred log lengths for tonnage sawlog sorts shall include the following plus any additional lengths identified on the Bid Supplemental Information form:

Species Type	Preferred Lengths
Conifer Sorts	16', 20', 24', 26', 32', 40'
Hardwood Sorts	18', 20', 26', 28', 30', 36', 38', 40'

For more specific information, contact the appropriate region office.

In-Person Bids

- A. Sealed bids must be in auction box or auction envelope before 10:00 a.m. on the day of sale at the location specified in the notice of sale.
- B. Sealed bids must be submitted in an envelope with the name of the sale, the bidder's name and the contract agreement number clearly written on the outside of the envelope. The full legal name and business address of the bidder must be inserted where indicated on the form, and must be the same as the name on the bid bond and timber sale contract. The bid form must be signed by an authorized person. When a bidder has more than one person authorized to bid, then documentation of those persons with signature authority for bidding must accompany the bid or be on file at the region office. Sealed bid envelopes are available at all region offices. One bid per envelope.
- C. Sealed bid envelopes must contain the following:
 1. A completed '**Log Sort Sealed Bid Form**';
 2. A completed '**Supplemental Information Form**' and;
 3. A bid deposit

Mailed Bids

- A. Mail-in bid envelopes are required to have printed on the outside: "DO NOT OPEN UNTIL SALE DATE. SEALED BID ENCLOSED." The sealed bid envelope(s) will be enclosed inside the mailed-in envelope. Mailed bids must be submitted in an envelope with the name of the sale, the bidder's name and the agreement number clearly written on the outside of the envelope. The full legal name and business address of the bidder must be inserted where indicated on the form, and must be the same on the bid bond and timber sale contract. The bid form must be signed by an authorized person. When a bidder has more than one person authorized to bid, then documentation of those persons with signature authority for bidding must accompany the bid or be on file at the region office. Mail-in envelopes are available at all region offices. One bid per mailed-in envelope.
- B. Mail-in or otherwise delivered bids will be accepted up to 4:30 p.m. the last business day before the auction by the region office in which the sale is located. Bidders assume the risk for the method of delivery they chose. The DNR assumes no responsibility for any delays caused by any delivery service.
- C. Sealed bid envelopes must contain the following:
 1. A completed '**Log Sort Sealed Bid Form**';
 2. A completed '**Log Sort Sealed Bid Supplemental Information Form**' and;
 3. A bid deposit

Department of Natural Resources Region Offices

Olympia Headquarters
 1111 Washington St SE
 MS 47000
 Olympia, WA 98504-7000
 (360) 902-1000
www.dnr.wa.gov

Product Sales & Leasing Division

1111 Washington St SE
 MS 47014
 Olympia, WA 98504-7014
 (360) 902-1600

South Puget Sound Region

950 Fairman Ave N
 Enumclaw, WA 98022-9282
 (360) 825-1631

Pacific Cascade Region

601 Bond Road
 PO Box 280
 Castle Rock, WA 98611-0280
 (360) 577-2025

Southeast Region

713 Bowers Road
 Ellensburg, WA 98926-9301
 (509) 925-8510

Northwest Region

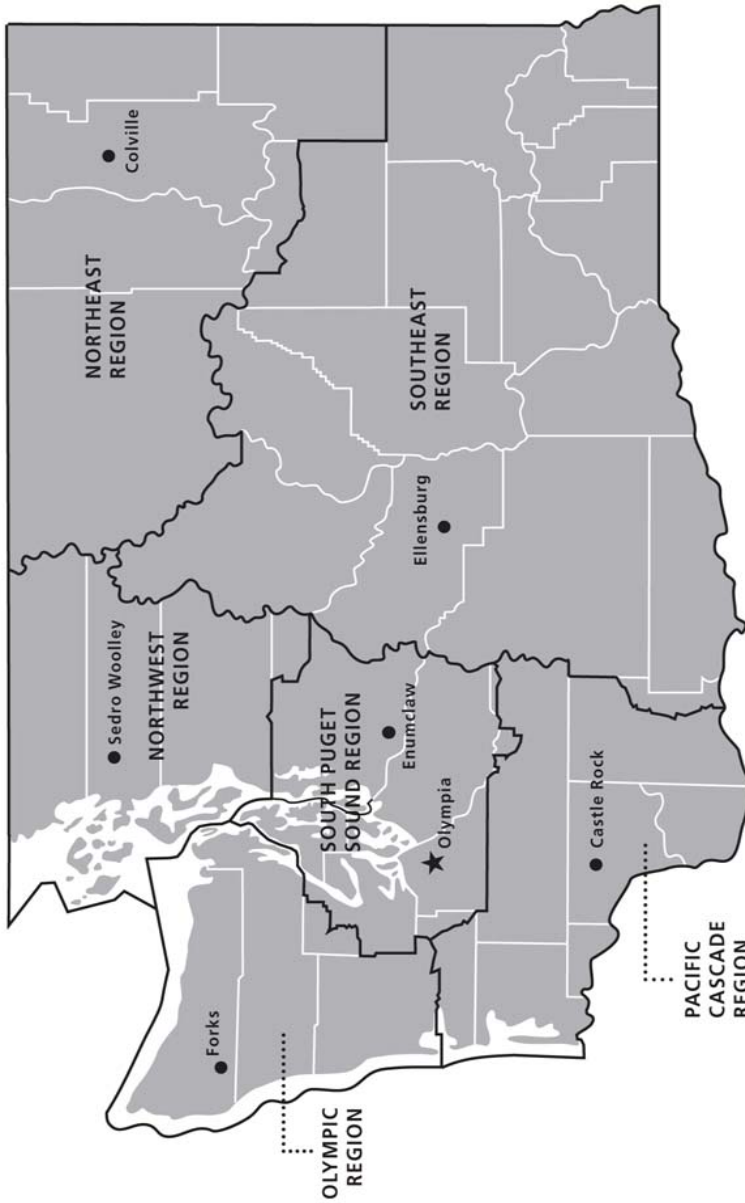
919 N Township St
 Sedro Woolley,
 WA 98284-9384
 (360) 856-3500

Olympic Region





411 Tillicum Lane
 Forks, WA 98331-9271
 (360) 374-2800

Northeast Region

225 S Silke Road
 PO Box 190
 Colville, WA 99114-0190
 (509) 684-7474



DNR REGIONS

-  DNR Region Boundaries
-  County Boundaries
-  DNR Region Office
-  Olympia Headquarters



WASHINGTON STATE DEPT OF
NATURAL RESOURCES



For more information about how public lands are managed visit DNR's web page at www.dnr.wa.gov

Fire, Burn Ban Information and Region Offices
 Toll Free: 1-800-527-3305 General TTY: 7-1-1





WASHINGTON STATE DEPT OF
**NATURAL
RESOURCES**

1111 WASHINGTON ST SE
MS 47014
OLYMPIA WA 98504-7014

www.dnr.wa.gov

For alternate formats
of this document,
Call (360) 902-1000
TRS: 7-1-1

PRINTED IN THE USA ON RECYCLED PAPER

