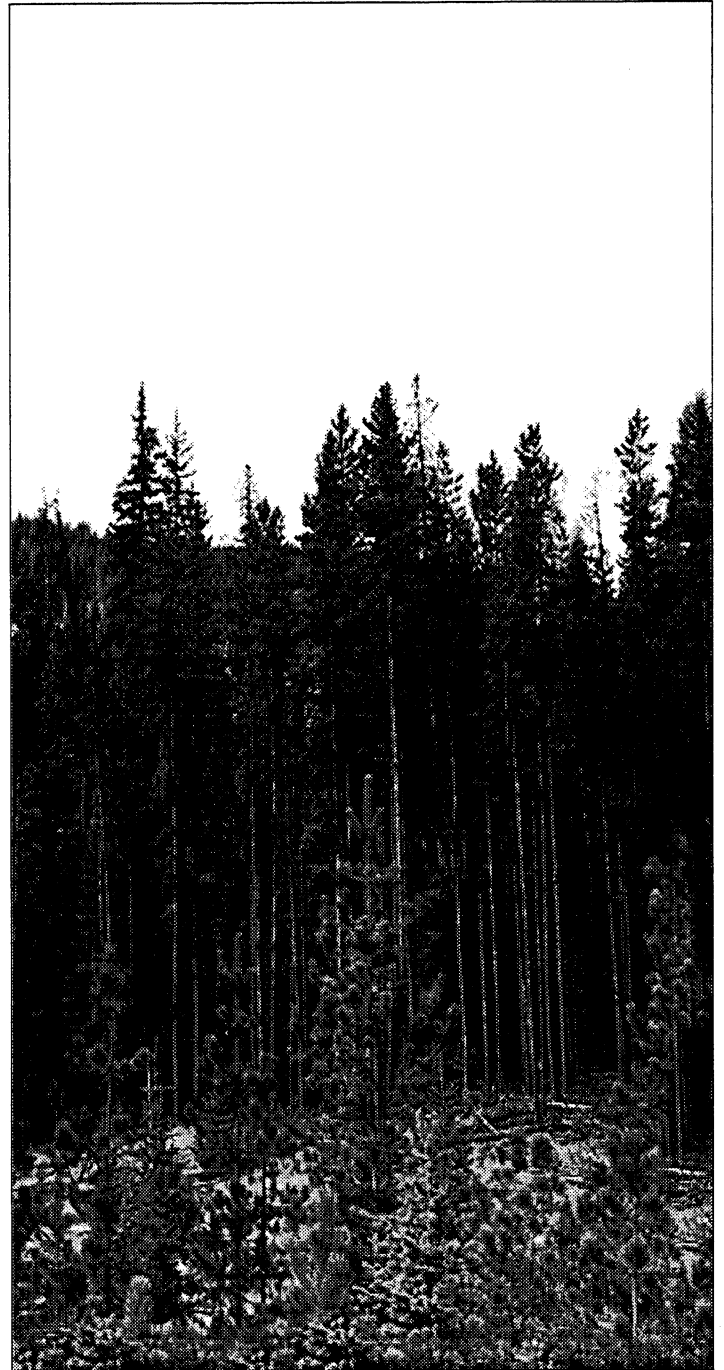


LOOMIS STATE FOREST

FINAL LANDSCAPE PLAN
June , 1996



WASHINGTON STATE DEPARTMENT OF
Natural Resources

Jennifer M. Belcher - Commissioner of Public Lands
Kaleen Cottingham - Supervisor

Acknowledgments

Management Team

Kaleen Cottingham - Supervisor
Art Stearns - Deputy Supervisor
Wes Culp - Northeast Region Manager
Bob Anderson - Northeast Region Overall Project Manager
Michael Perez-Gibson - Resource Planning & Asset Management
Mike Nystrom - Resource Planning & Asset Management
Chuck Johnson - Northeast Region, Highlands District Manager
Roy Henderson - Assistant Northeast Region Manager
Mark Mauren - Resource Planning & Asset Management
Paul Baines - South Okanogan District Manager
Roger Huestis - Loomis Landscape Plan Writer

Technical Support

Bill Barber - Eastside Silviculturist
Richard Bigley - Ecologist
Jeff Cederholm - Fish Biologist
Larry Dominguez - Fish Biologist
Dave Dietzman - SEPA Advisor
Catherine Elliott - DEIS Writer (1st half)
Peggy Murphy - DEIS Writer (2nd half)
Christi Fisher - Forest Engineer
Nancy Joseph - Geologist
Deborah Lindley - Wildlife Biologist
Jeff Pebworth - Wildlife Biologist
Cheryl Quade - Wildlife Biologist
George Wilhere - Wildlife Biologist
Chuck Perry - Range Manager
Will Keller - Range Manager
Brent Billingsby - Range Manager
Karen Ripley - Forest Entomologist
Ken Russell - Forest Pathologist
Jim Ryan - Forest Hydrologist
Ken Schlichte - Soil Scientist
David Traylor - Recreation Planning
Walt Obermeyer - Inventory
Kristen Jamison - Cartography
Diane Ziehen - Cartography
Dennis Carlson - Silviculture
George Flannigan - Assistant Division Manager
Billy Dean Scott - Economist
Dale Danell - Region Engineer
Arne Johnson - Unit Forester
Paul Dziedzic - Public Involvement
Starla Colley - Word Processing Support



LOOMIS STATE FOREST

FINAL LANDSCAPE PLAN

June, 1996



WASHINGTON STATE DEPARTMENT OF
Natural Resources

Jennifer M. Belcher - Commissioner of Public Lands
Kaleen Cottingham - Supervisor

Northeast Region

PREFACE

PRINCIPAL PLAN CHANGES

The Draft Loomis State Forest Landscape Plan was issued for public comment March 4, 1996. Public comments were received during the 30 day comment period between March 8 and April 8, 1996 and at Public Hearings held at Okanogan and Olympia. The Board of Natural Resources is expected to act on this final Loomis State Forest Landscape Plan at their June, 1994 meeting.

The following notes identify the principal additions and changes from the Draft Landscape Plan as a result of comments received.

1. Air Resource

- a. A more detailed description for content of fire suppression plans.

2. Archaeological/Historical Resource

- a. Text added to planning concepts that DNR will work with tribes to preserve traditional and cultural heritage sites consistent with the Forest Resource Plan policy no. 24.

3. Fish Resource

- a. Additional discussion of when 30% volume removals may or may not occur in RMZs was added to planning concepts text and guideline 3.1 consistent with Forest Resource Plan policy no. 20.
- b. Clarification of Type 5 stream protection added to guideline 3.2. and riparian landscape objectives consistent with Forest Resource Plan policy no. 20.
- c. Guideline 3.3.b revised to include limiting cattle access to creeks to reduce streambank damage.

4. Grazing Resource

- a. Clarification of relationships between Coordinated Resource Management, Resource Management Plans and permitting process added in planning concepts text and guideline 4.4.
- b. Guideline 4.4 revised to emphasize additional controls to limit cattle grazing impacts.
- c. Guideline 4.8 added to assess and limit potential access points for cattle access to streams after timber harvest.
- d. Grazing permit range map added.

5. Mineral Resource

- a. No changes.

6. Recreation Resource

- a. Discussion of enforcement of road closures through education of user groups and possible enforcement in conjunction with the Dept. of Fish and Wildlife expanded in planning concepts.
- b. Recreation monitoring added to Section 5.

7. Soils Resource

- a. No changes.

8. Timber Resource

- a. The term "forest health" as generally used in the plan was defined in the context of forest stands and trees.
- b. Sustainable harvest calculations and SNAP planning harvest level predictions are not the same. A discussion of the difference in sustainable harvest calculations as identified through Forest Resource Plan policy and harvest levels as predicted through SNAP modeling was added.
- c. Age class maps added in "Decade" discussions after conceptual harvest maps depicting age class distribution across the forest over time as timber harvest occurs (at the end of 10, 20, 40 and 80 years).

9. Water Resource

- a. The Dept. of Ecology has committed to jointly monitor several plots in the forest with DNR only through 1999. Text added that the DNR will continue to monitor beyond 1999 as needed.

10. Wildlife Resource

- a. Late successional characteristics discussion expanded in planning concept text, guideline 10.5, and new Appendix D. The point that timber harvest will occur in these blocks, but certain characteristic will be maintained through management was emphasized in plan and is consistent with Forest Resource Plan policy no. 22.
- b. New leave tree guideline added for retaining some large ponderosa pine trees in the ponderosa pine zone.
- c. Additional map added to show approximate locations of late successional habitat management blocks and principal lynx travel routes.



CONTENTS

SECTION 1

- 5 **Introduction**
- 6 Vicinity Map
- 7 Landscape Planning
- 8 Purposes of A Landscape Plan for the Loomis State Forest
- 8 Loomis State Forest Landscape Plan
- 9 Loomis Landscape
- 10 Current Conditions in the Loomis Forest
- 11 Desired Future Conditions

SECTION 2

- 13 **Landscape Objectives for the Loomis State Forest**

SECTION 3

- 19 **Implementation Plan - Decade by Decade View Introduction**
- 23 Decade One (1996 - 2005)
 - 26 Decade One Map - Conceptual Harvest & Road Network
 - 27 Ten Year Age Class Map
- 28 Decade Two (2006 - 2015)
 - 30 Decade Two Map - Conceptual Harvest
 - 31 Twenty Year Age Class Map
- 32 Decades Three - Five (2016 - 2045)
 - 34 Decades Three - Five Map - Conceptual Harvest
 - 35 Forty Year Age Class Map
- 36 Decades Six - Eight (2046 - 2075)
 - 37 Decades Six - Eight Map - Conceptual Harvest
 - 38 Eighty Year Age Class Map
- 39 Harvest Targets by Decade and Vegetation Zone
- 39 Potential Transportation Activity by Decade

SECTION 4

- 40 **Landscape Plan Guidelines**
- 40 Introduction
- 40 Resource Guidelines
 - 42 Air Resource
 - 44 Archeological/Historical Resource
 - 46 Fish Resource

49	Grazing Resource
52	Permit Range Map
53	Mineral Resource
54	Recreation Resource
57	Conceptual Use Zones Map
58	Soils Resource
61	Forest Slope Stability Map
62	Timber Resource
66	Forest Inventory Map
67	Mountain Pine Beetle Map
68	Water Resource
70	Water Types and WAUs Map
71	Wildlife Resource
76	Vegetation Types Map
77	Late Successional Blocks Map

SECTION 5

78	Monitoring and Adaptive Management
78	Introduction
79	Adaptive Management
80	Resource Monitoring

APPENDICES

88	Loomis State Forest Chronology
92	Vegetation Zones
110	Vegetation Zones Map
111	Glossary
124	Late Successional Forest Characteristics