

Sustainable Harvest Level

A Presentation to the Board of Natural Resources

Duane Emmons

December 6, 2022





Agenda

- Sustainable Harvest Level
 - What, Where, and Why
- Policies, Laws, Fiduciary Responsibilities, and Plans Impacting Forest Management on Trust Lands



What

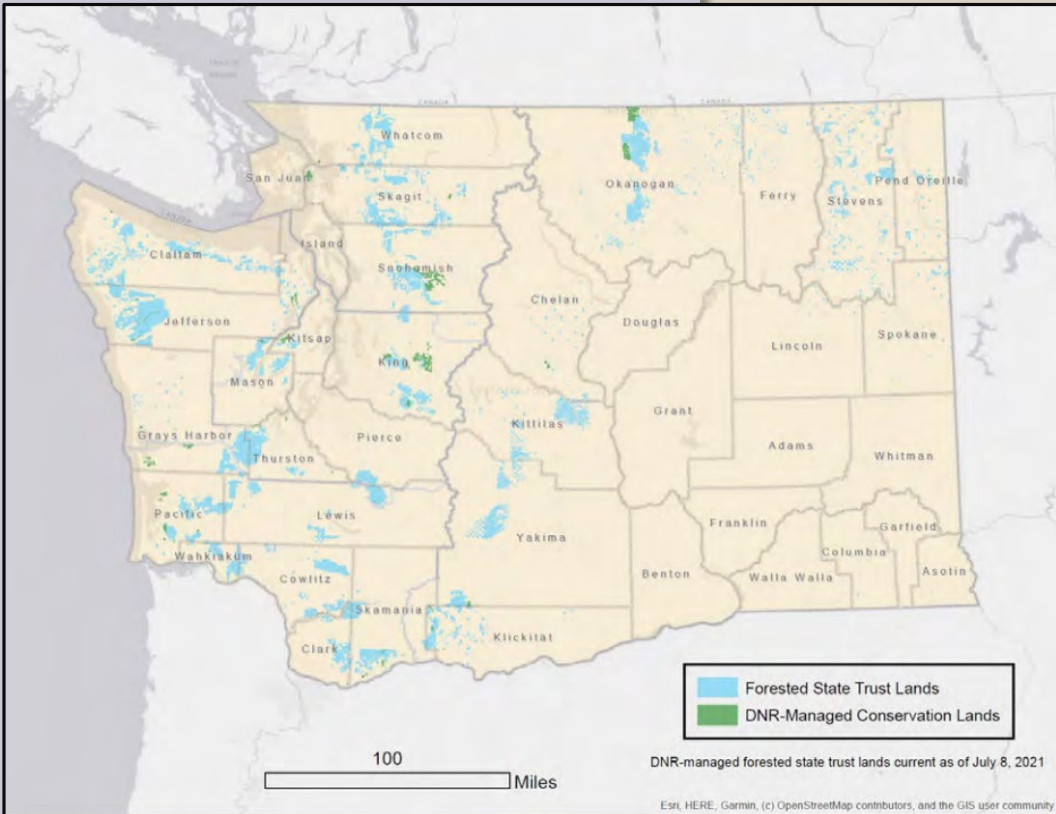


- **100 year** projection of growth and harvest, but only set level for next **10 year period**
- Provide a sustainable **flow** of volume for current and future generations in **perpetuity**
- Ensures **habitat** conditions and other objectives are maintained or improved

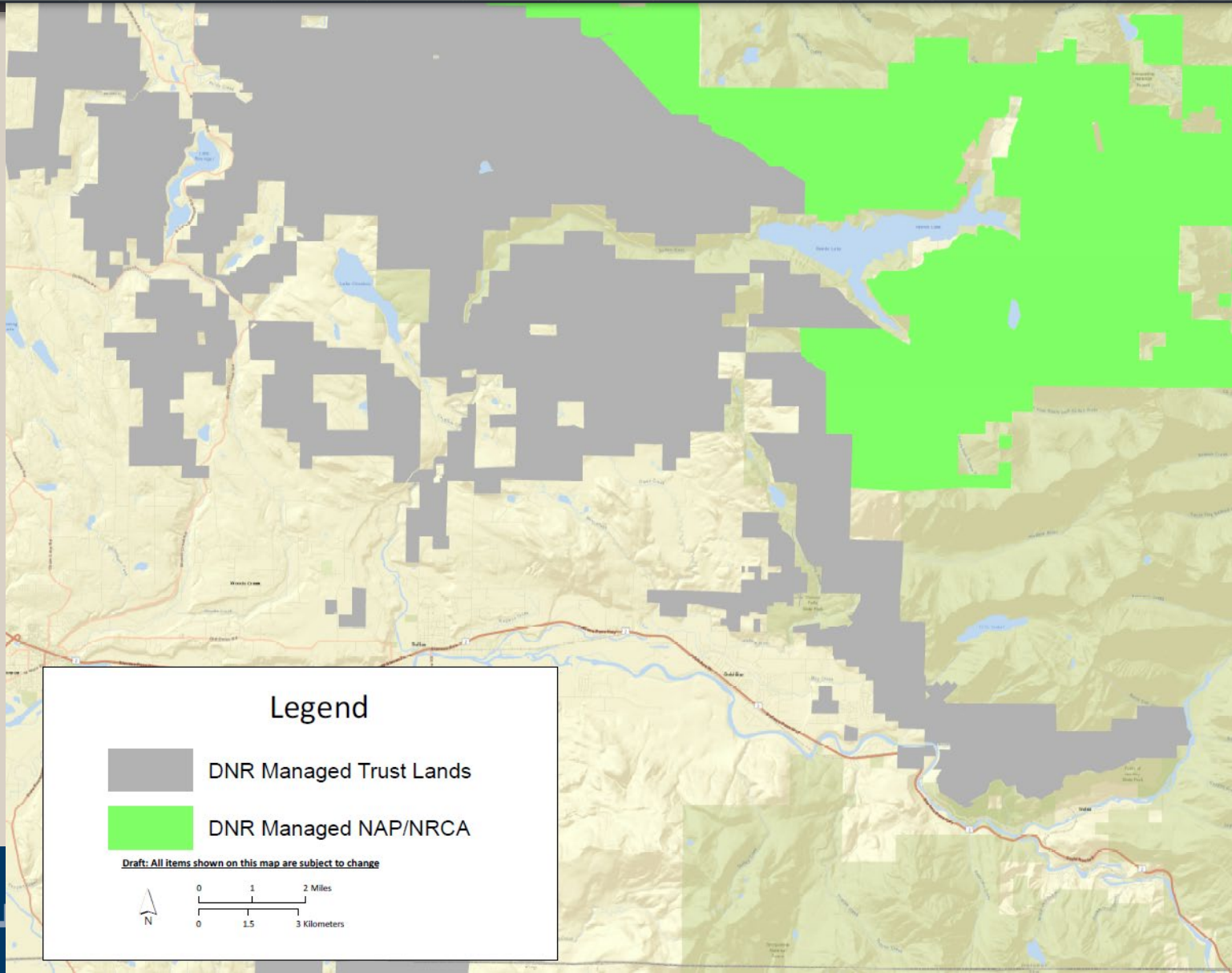


Where



- Forested State Trust Lands
- On Lands Not Deferred
- Riparian Volume Not Included



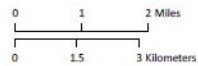
Where



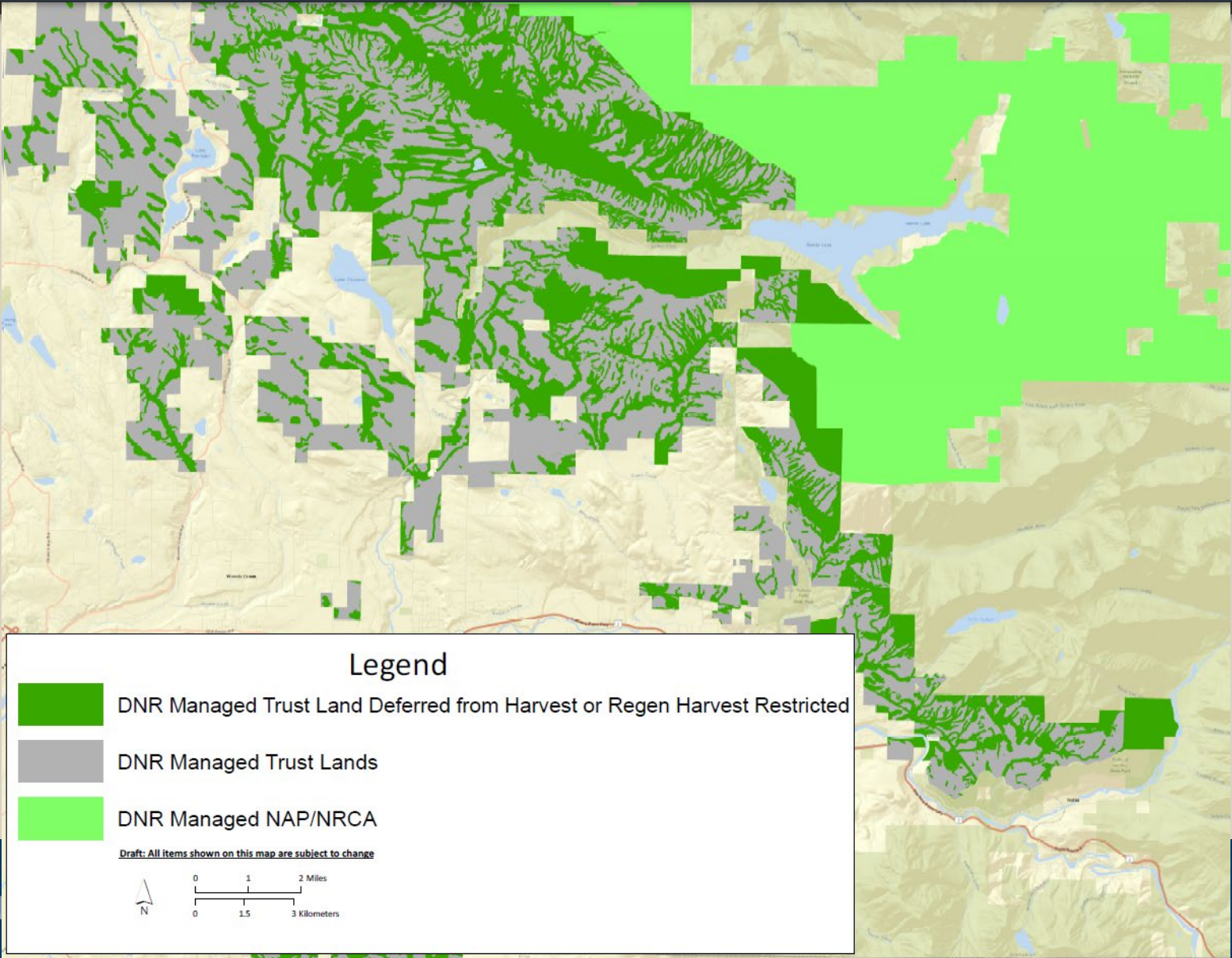
Legend

-  DNR Managed Trust Lands
-  DNR Managed NAP/NRCA

Draft: All items shown on this map are subject to change



Where



Why



- Prudent Land Management
- Policy
- Statute
- Business need





Climate
Disturbance

Meet Trust
Responsibilities

**Prudent
Land
Manager**



Ecological Health
and Habitat



Policy for Sustainable Forests

Board Policy Objectives



- Create trust income while providing environmental protection and social benefits, consistent with the duties of a fiduciary



- Use professional judgment, best available science and sound field forestry to achieve excellence in public stewardship



- Promote active, innovative and sustainable stewardship on as much of the forested land base as possible





Policy for Sustainable Forests

Policy on Recalculation of the Sustainable Harvest Level



- ❖ Recalculate the Statewide Sustainable Harvest Level no less frequently than every ten years

- ❖ Adjust calculation with changing circumstances within planning decade, such as:
 - ❖ Major changes in legal requirements
 - ❖ Significant new Board direction
 - ❖ New information about available resource base
 - ❖ Changes in technology





Sustainable Harvest Statutes



RCW 79.10.300-320

(summarized)

“Sustainable Harvest Level”

volume of timber
scheduled for sale
during a planning decade

“Sustained yield plans”

provide harvesting on a
continuing basis without
curtailment or cessation

DNR will:

- 🌲 Manage state-owned lands for growing forest crops on a sustained yield basis
 - 🌲 Periodically calculate a sustainable harvest level





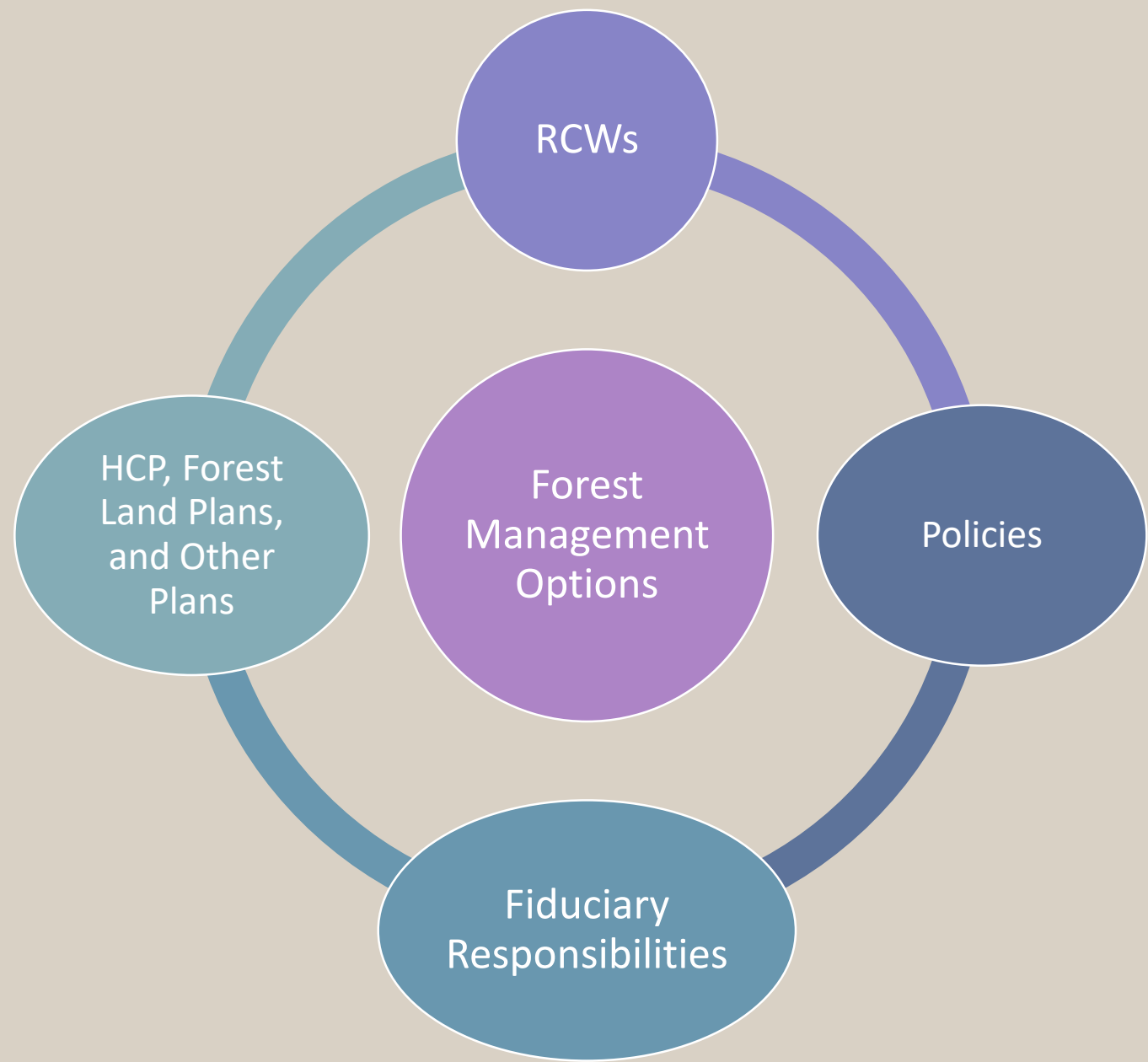
Business Need



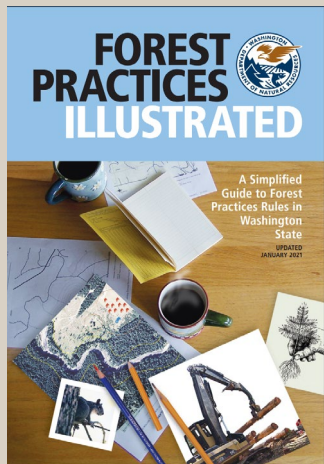
- Westside
 - 2015-2024 Completed
 - FY 2025 – 2034 Next planning decade
- Eastside
 - Last completed 1996
 - Forest Health Treatment Prioritization

Agency Operations are Driven by the Sustainable Harvest Level

What impacts management on forested state trust lands?

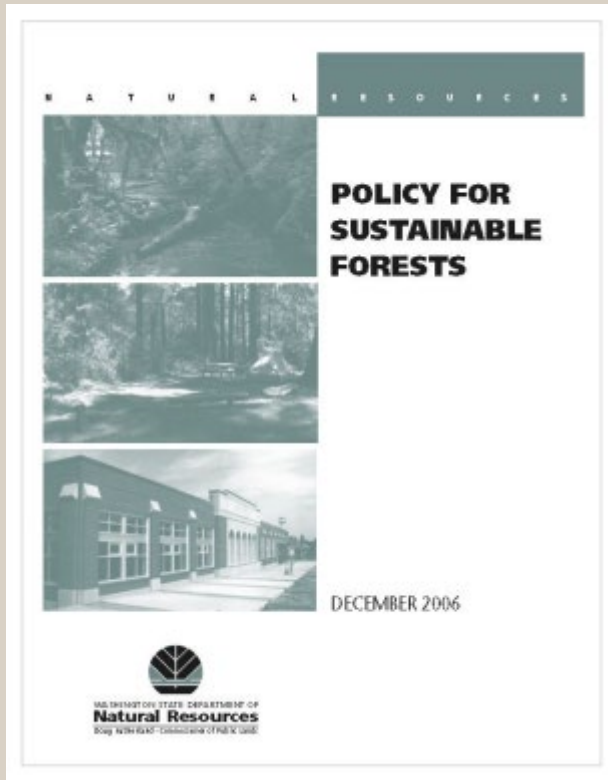


Revised Code of Washington



- 43.30 - Management of State Forest and Land Resources
 - DNR's Powers, Duties, and Functions
- 79 - Public Lands Management
 - Management Rates
 - Multiple Use Definition
- 76.09 - Forest Practices
 - Reforestation Requirements
 - Stream Buffers and Leave Tree Retention in Eastern WA
 - Hydraulic Project Approvals

Board Policies



- Policy for Sustainable Forests - examples
 - Visual Impacts
 - Maximum Even-aged Harvest Unit Size
 - Old-Growth Stands in Western WA
 - Cultural Resources
 - Catastrophic Loss Prevention

Fiduciary Responsibilities

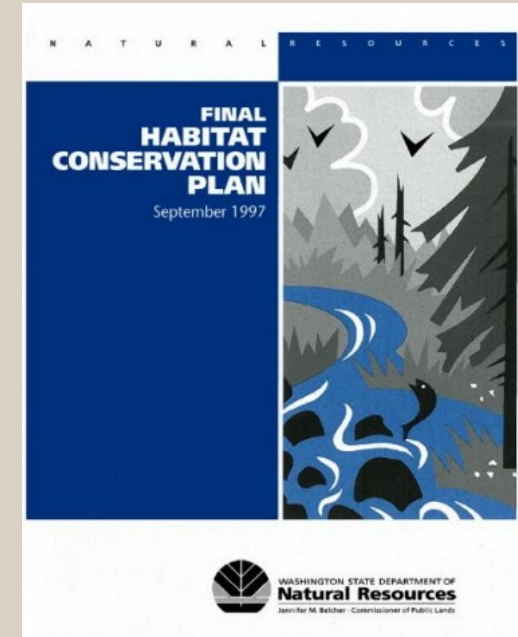
- State Constitution
 - DNR Follows Common Law Duties of a Trustee
- County of Skamania v. State of Washington
 - Undivided Loyalty, Manage Trust Assets Prudently
- CNW et al. v. Commissioner of Public Lands et al.
 - Affirmed Enabling Act Created a Trust
 - No Changes to Existing Statutes or Board Policy
 - DNR's Management Provides a Benefit to the General Population

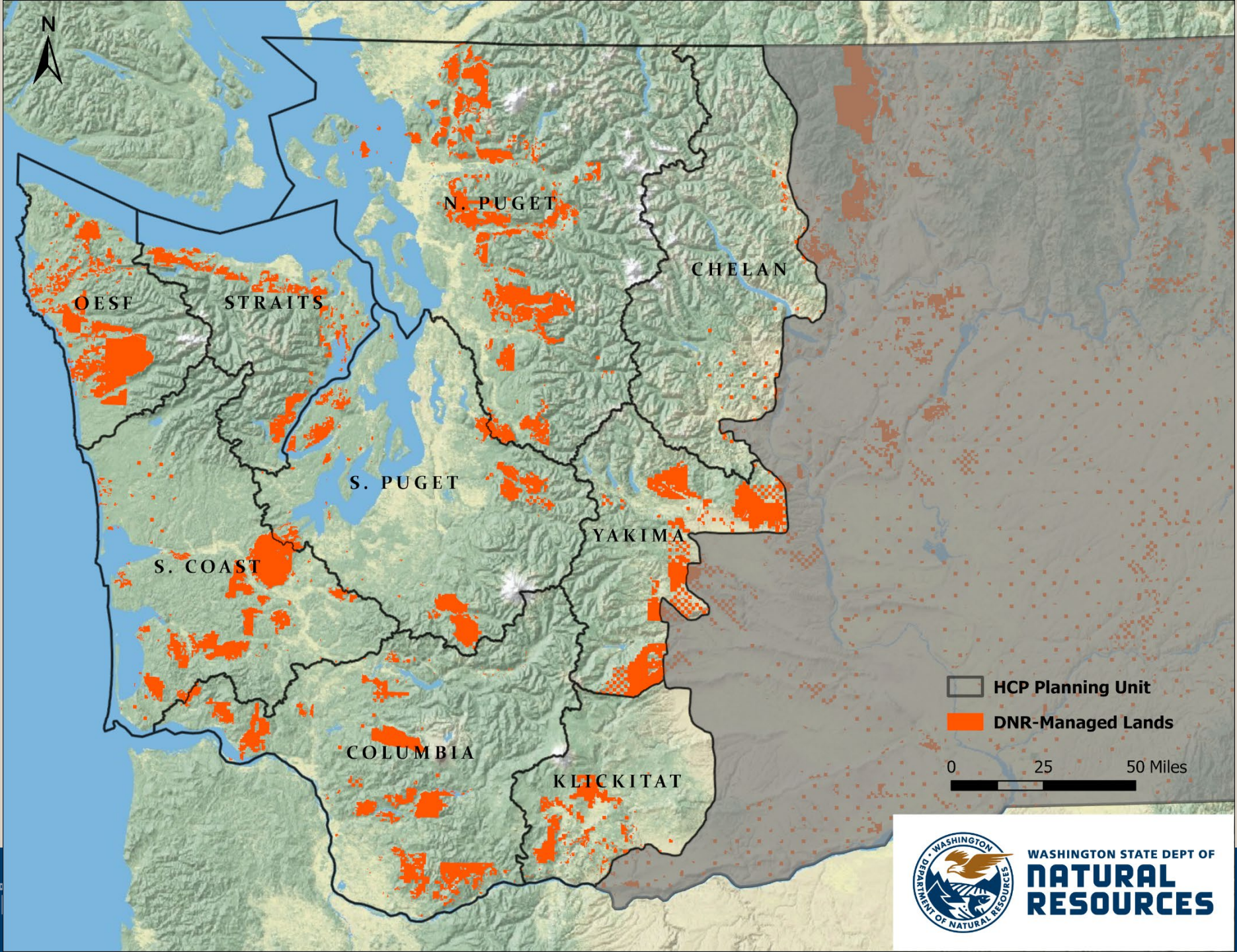


1997 Habitat Conservation Plan

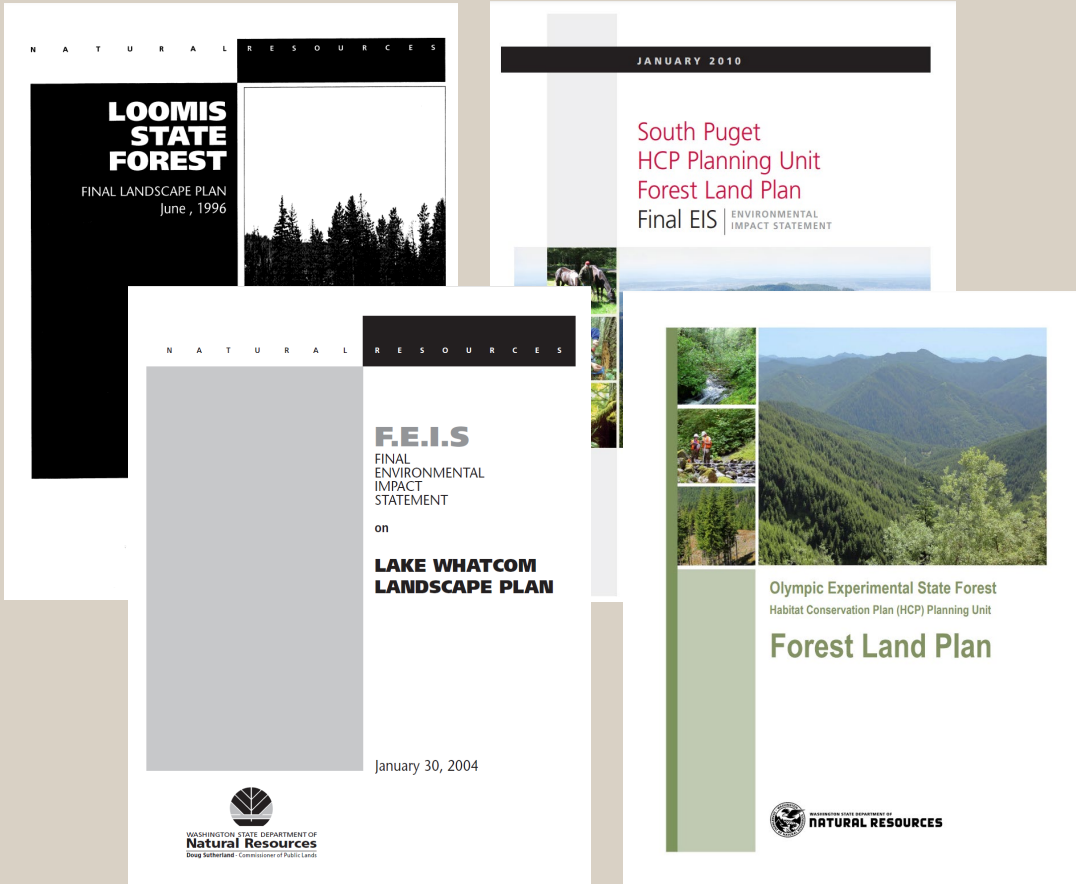


- Northern Spotted Owl
- Marbled Murrelet
- Riparian Forest Restoration Strategy – Westside Only
- Multi-species Conservation Strategy for Unlisted Species





Forest Land Plans and Landscape Plans



- Loomis State Forest Landscape Plan
- Lake Whatcom Landscape Plan
- South Puget Sound Forest Land Plan
- Olympic Experimental State Forest (OESF) Forest Land Plan

Other Plans



- 20 Year Forest Health Strategic Plan
- Plan for Climate Resilience
- Lynx Habitat Management Plan

Scales of Planning, Implementation, and Modeling

Federal and State Law | Applied to all Stages | Examples: Forest Practices Rules, Clean Water Act

Strategic Stage:
Determine **What**
to Achieve

Set Board of Natural Resources Policies
*Examples: Policy for Sustainable Forests, State Trust Lands
Habitat Conservation Plan, sustainable harvest level*

Modeling Support: Develop Strategic Model
*Includes: Northern spotted owl habitat goals, stream buffer
widths, harvest deferrals, maximum harvest unit sizes*

Tactical Stage:
Determine **How and
Where** to Achieve it

Develop Implementation Guidance
*Examples: Implementation procedures, maps, databases,
timber harvest schedules*

Modeling Support: Develop Tactical Model
Includes: Adjacency constraints, harvest deferrals

**Operational
Stage:**
Implement

**Implement Individual Actions per Laws, Policies,
and Implementation Guidance**
Examples: Timber sales, road building

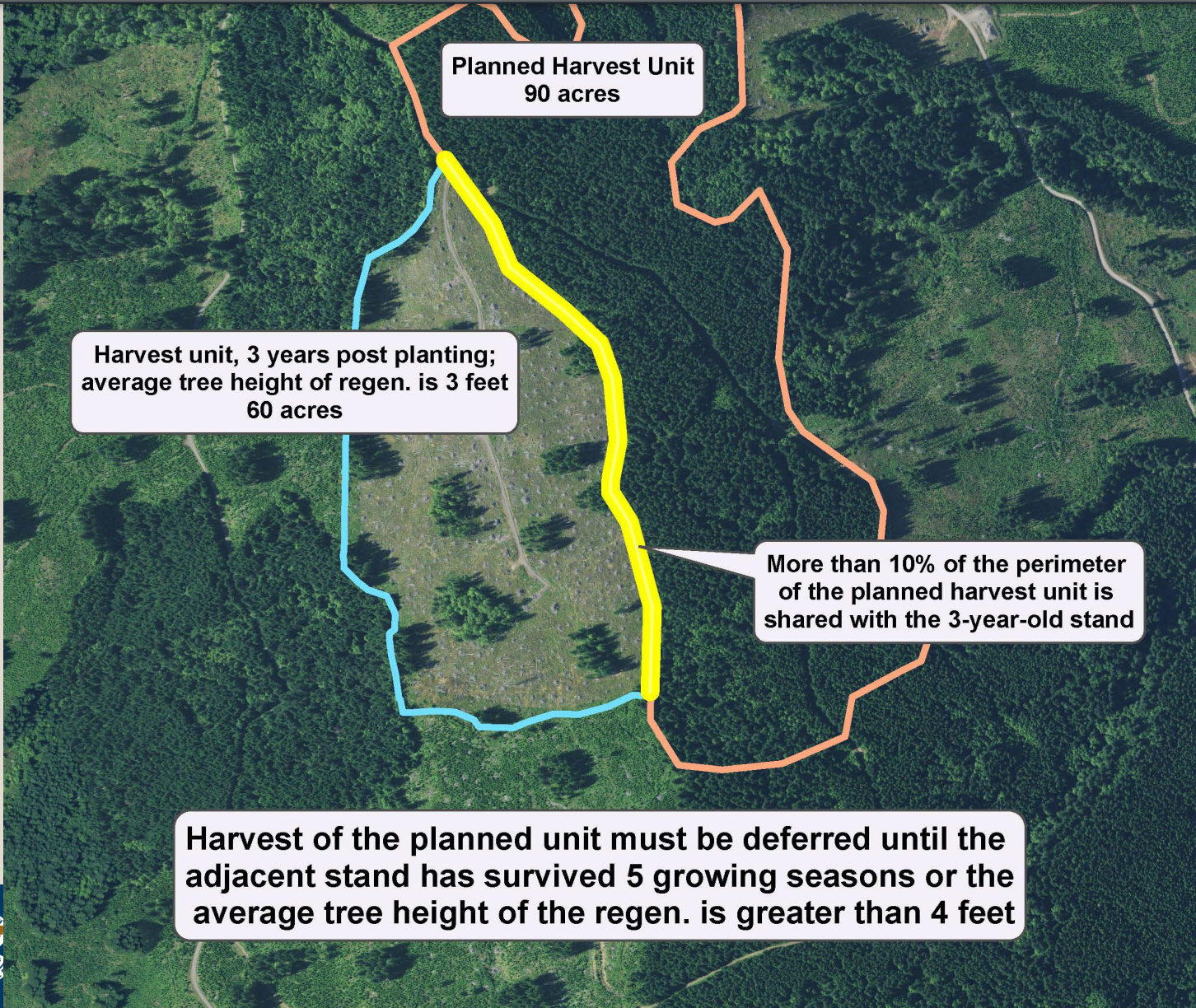
**Modeling Support: Develop Simulations of
Individual Actions as Needed**
Example: Aesthetic impacts of timber sales

Feedback ↑

Feedback ↑

Tactical Example

Harvest Adjacency “Green-up” Constraint



- Determined by Forest Practices WAC 222-30-025 limiting maximum even-aged harvest unit size to 120 acre
- “Green-up” definition: regenerating stand is 5 years old or greater than 4 feet average height

Next Steps



- Finalize Need, Purpose, and Objectives (SEPA)
- Finalize critical policy questions for EIS Analysis
- Provide background on the model framework



Questions?



