

# Reade 80

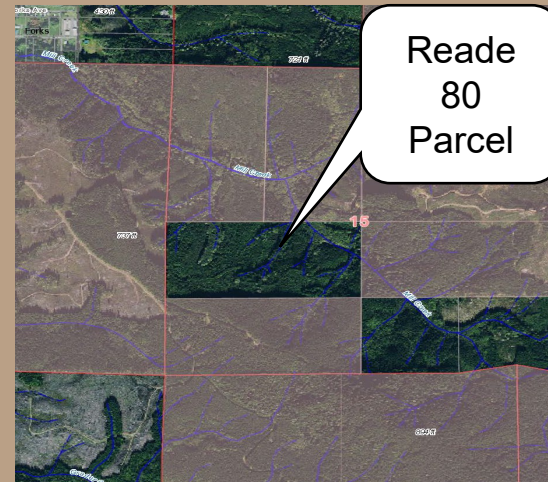
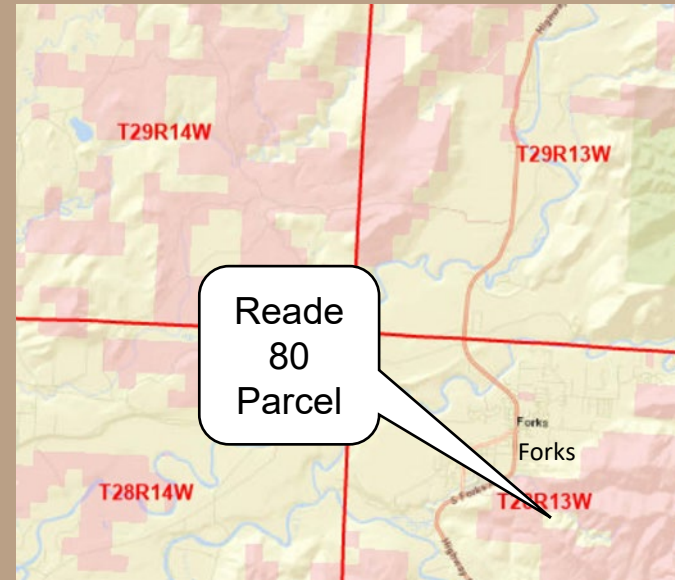
## TRUST PURCHASE Clallam County



# Reade 80

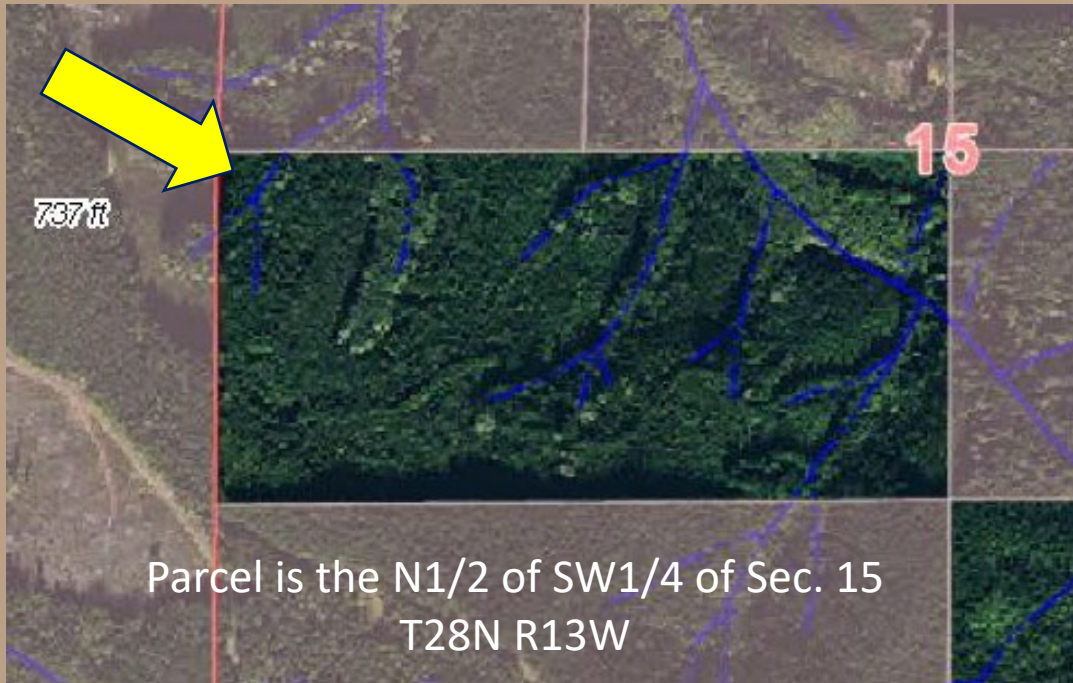
## Location

- One mile SE of Forks
- Clallam County
- Private edge-holding in DNR's Reade Hill Landscape
- Purchase using Legislature funds



# Reade 80

## Property



- 81.76 acres
- 17 year old mixed conifer and hardwoods
- Site Class 3; WH-110
- Road system on current state trust lands
- Contacted WSAC and Clallam County

# Reade 80

## Benefits

- Adds productive forestland to the trust land base in Clallam County
- Removes a private in-holding within DNR managed trust lands
- Retains quality working forests
- Improves trust revenue potential

# Reade 80

## Purchase Price:

- \$250,000; \$3,058/acre
- State forestland trust funding from the Legislature. Part of \$5 million for Clallam and Jefferson counties
- Beneficiary to be Clallam County



# Reade 80

Questions ?

Resolution #1609



