



# Middle Fork Snoqualmie

## Trust Land Transfer (TLT)

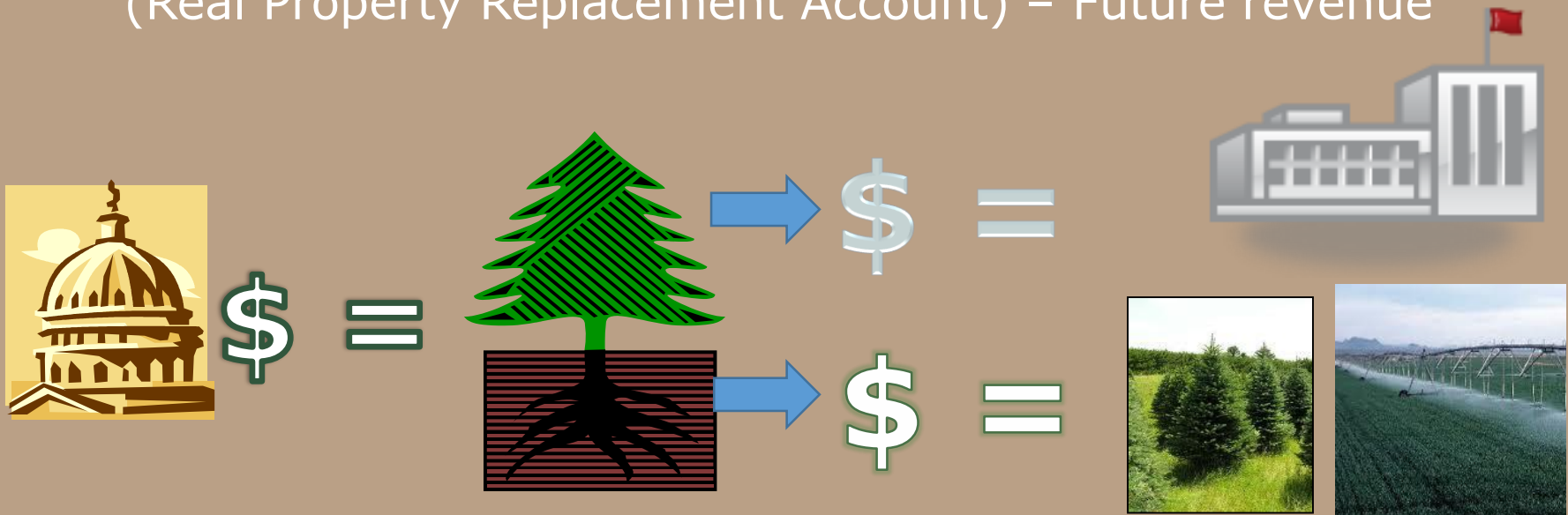
### King County



# Middle Fork Snoqualmie TLT

## Trust Land Transfer 101

- Timber value from transferred property builds schools (Common School Construction Account) – Immediate funds
- Land value buys replacement property for the trust (Real Property Replacement Account) – Future revenue



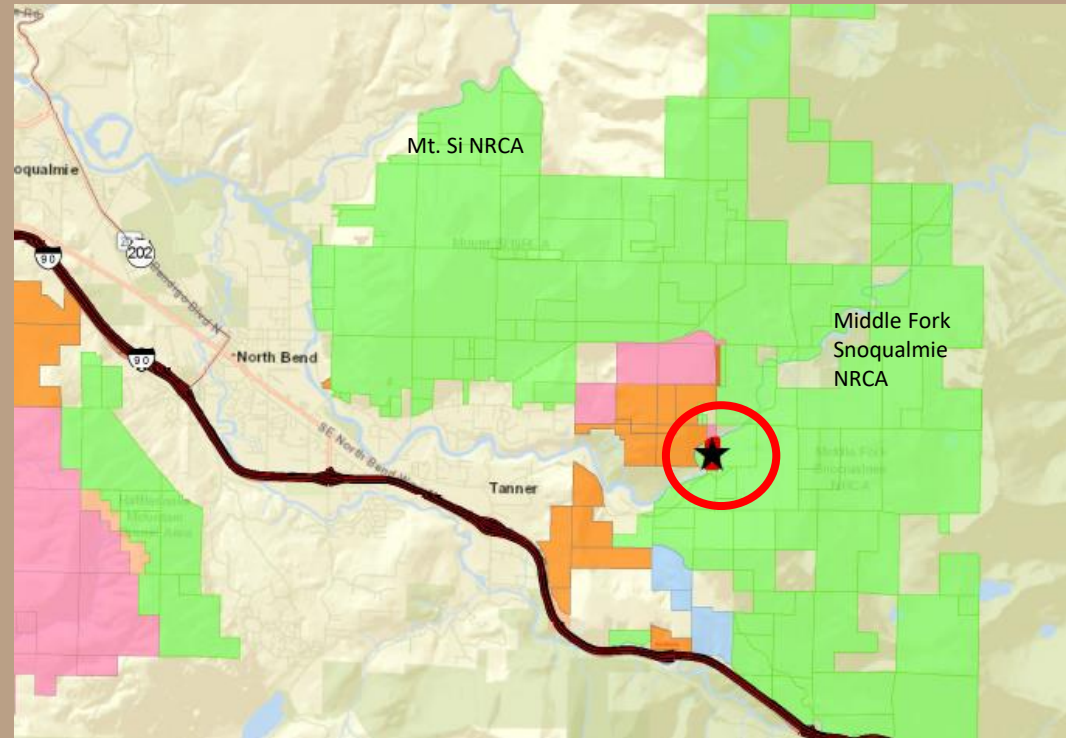
School Trust Property:  
Land + Timber



# Middle Fork Snoqualmie TLT

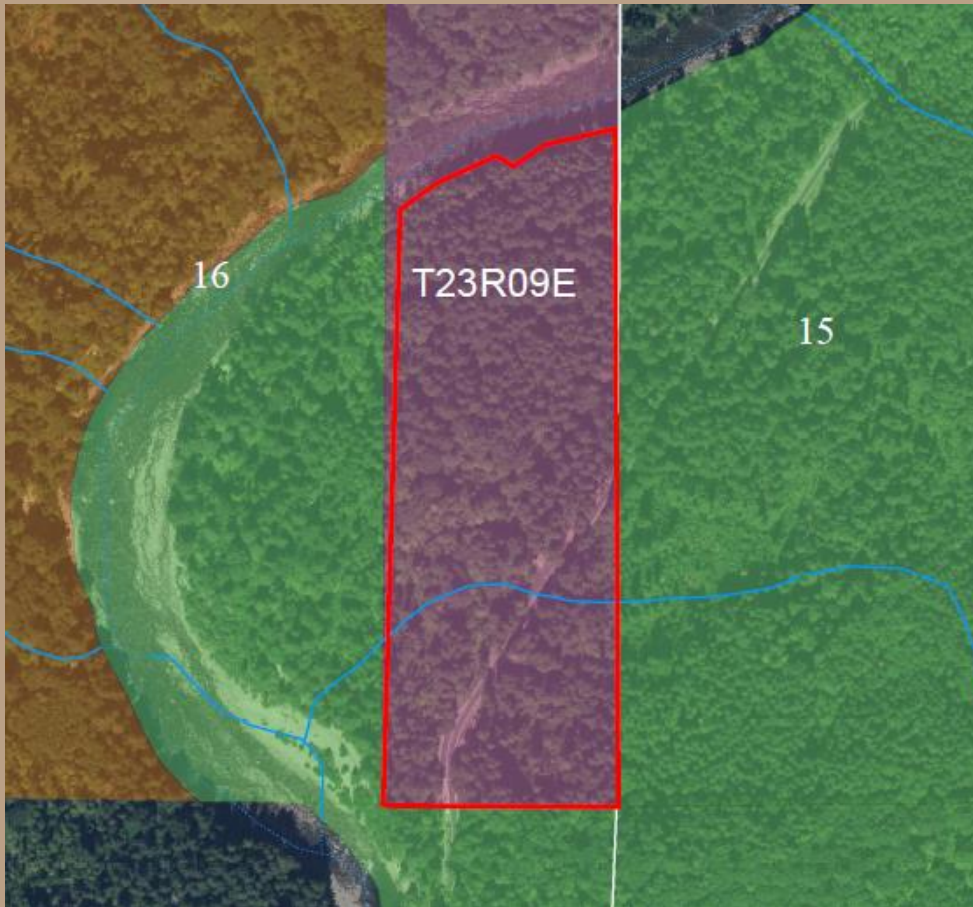
## Location

- Common School Trust
- King County
- East of North Bend
- NRCA in-holding



# Middle Fork Snoqualmie TLT

## Property



- 25.88 acres
- Proposed transfer to Middle Fork Snoqualmie NRCA
- Site has recreational encumbrance until 2026
- Riparian restrictions in north and the south

# Middle Fork Snoqualmie TLT

## Valuation

Trust	Common School Construction Account	Real Property Replacement Account	Total Value
Common School Trust	\$132,000	\$8,000	\$140,000



# Middle Fork Snoqualmie TLT

## Benefits

- Adds fish and wildlife habitat to the Middle Fork Snoqualmie NRCA.
- The timber value will be deposited into the statewide K-12 school construction projects.
- The land value will be re-invested in property with potential for generating increased revenue for the Common School Trust





# Middle Fork Snoqualmie TLT



Questions ?

Resolution #1572

Marina Dueck photo





