





Eastern Washington Sustainable Harvest Calculation

A Presentation to the Board of Natural Resources

Duane Emmons and Justin Schmal

February 7, 2023

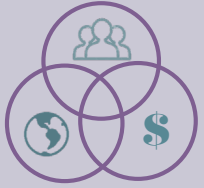


Agenda

- Review
- Policy impacting eastern WA model
- Considerations for eastern WA model
- Potential policy considerations
- Draft EIS timeline for eastern WA



What



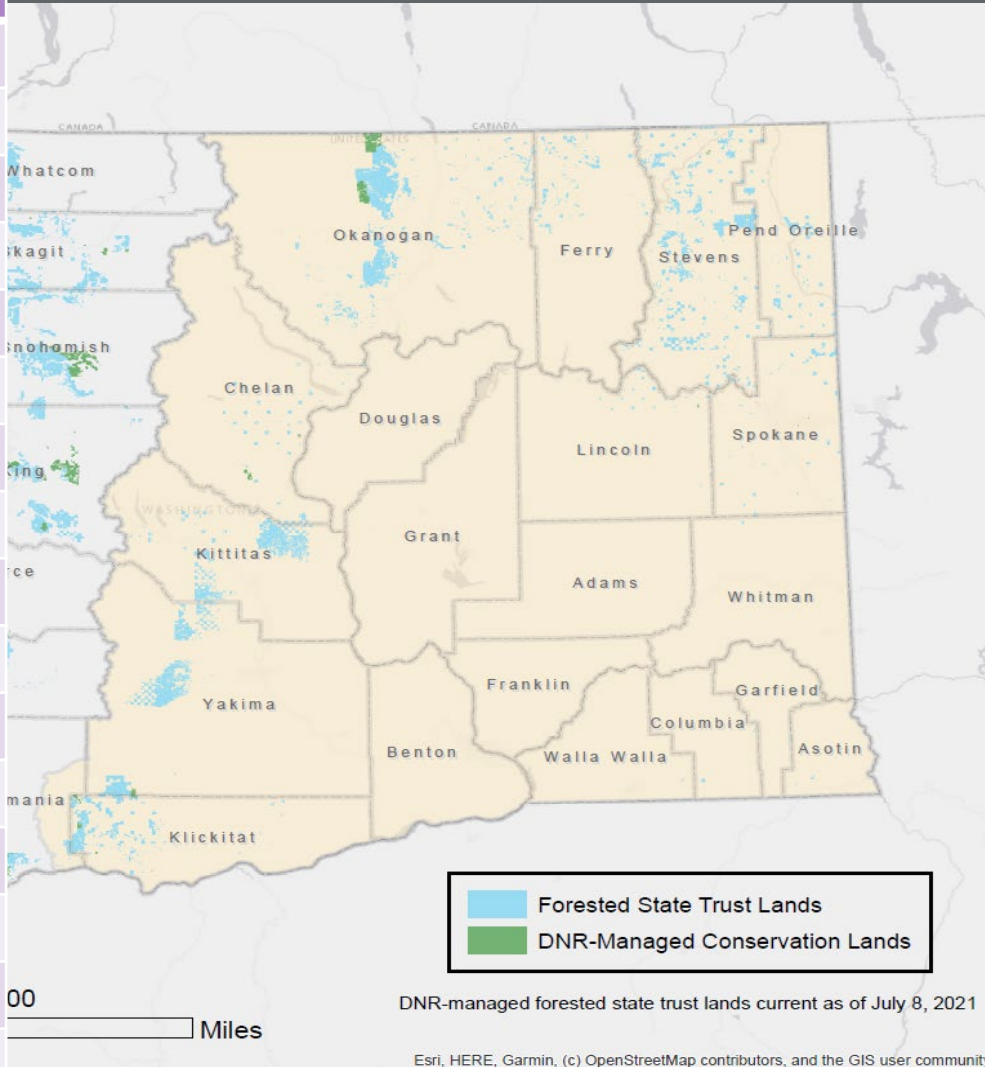
- **100 year** projection of growth and harvest, but only set level for next **10 year period**
- Provide a sustainable **flow** of volume for current and future generations in **perpetuity**
- Ensures **habitat** conditions and other objectives are maintained or improved



Where

Forested DNR Trust Acres by Eastside County

Okanogan	178,600
Stevens	143,300
Yakima	106,700
Kittitas	88,500
Klickitat	65,600
Pend Oreille	27,500
Ferry	22,300
Chelan	15,700
Spokane	14,600
Lincoln	6,000
Skamania	3,500
Columbia	900
Asotin	700
Whitman	400
Garfield	400
Walla Walla	300
Douglas	30



- Forested State Trust Lands
- On Lands Not Deferred
- Riparian Volume Not Included
- 675,000 acres

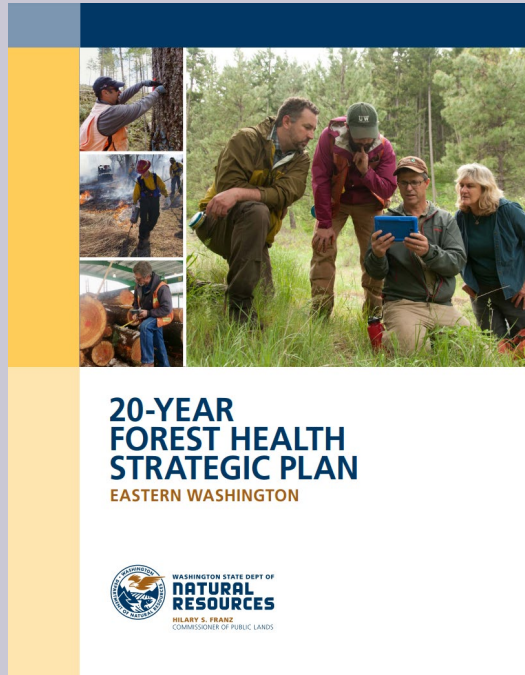
Why



- Prudent Land Manager
- Required by Policy and Statute
- Meet Trust Responsibilities
- Ecological Health and Habitat
- Climate and Disturbance



Business Need



- Eastern WA SHC last completed in 1996
- Forest Health Treatment prioritization needs to be incorporated
- Maintain Sustainable Forestry Initiative Certification

Policy for Sustainable Forests



Wetland buffer, Stevens County

Forest Ecosystem Health and Productivity

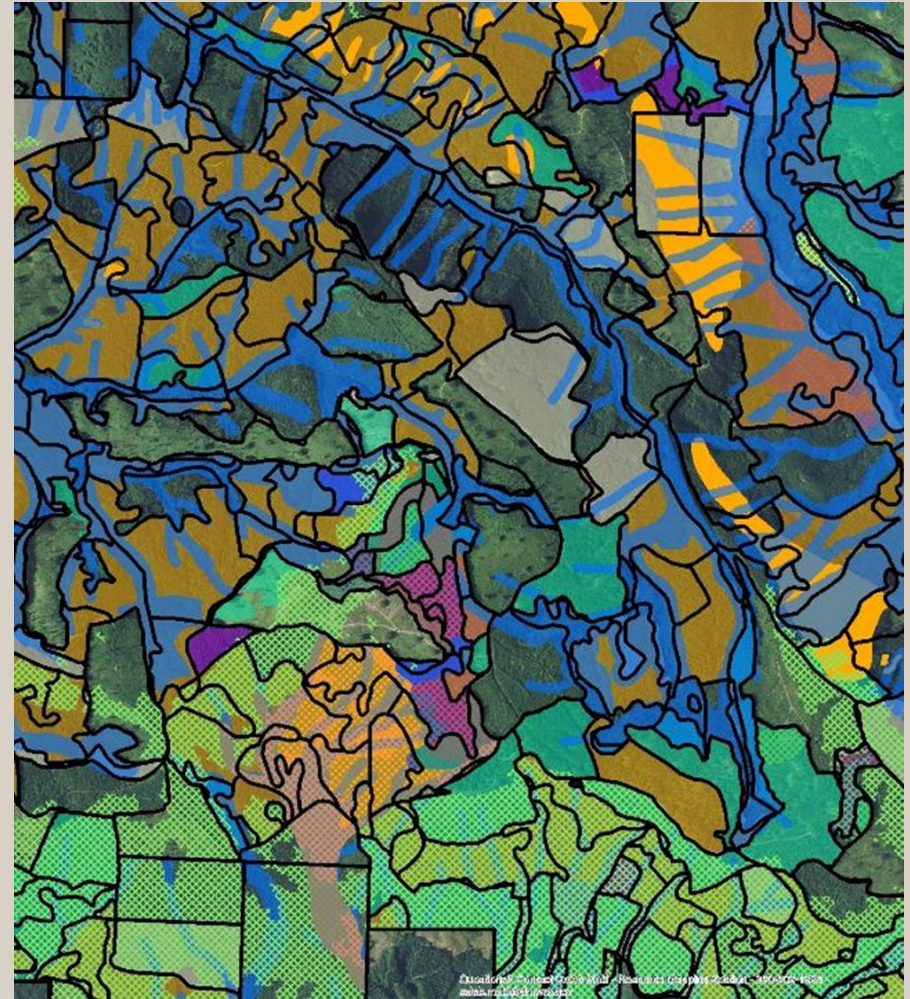
- Policy on Wildlife Habitat
- Policy on Riparian Conservation
- Policy on Special Ecological Features



Policy for Sustainable Forests

Economic Performance: Policy on Harvest Deferral Designations

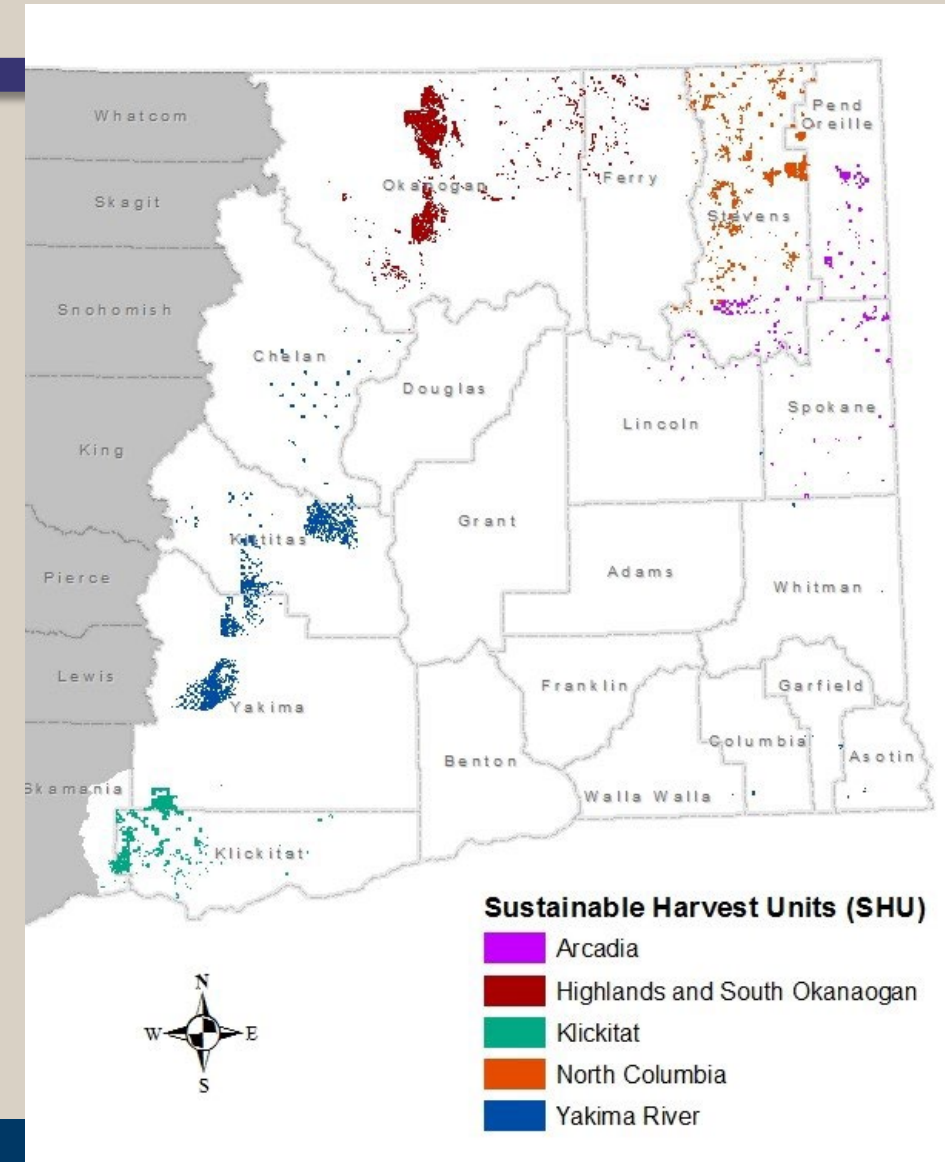
- Short term or long term deferrals include:
 - Unstable slopes
 - Access and easement issues
 - Special ecological features
 - Habitat for threatened and endangered species
 - Inoperable lands
 - Other local knowledge



Policy for Sustainable Forests

Economic Performance: Policy on Definition of Sustainability for the Sustainable Harvest Calculation

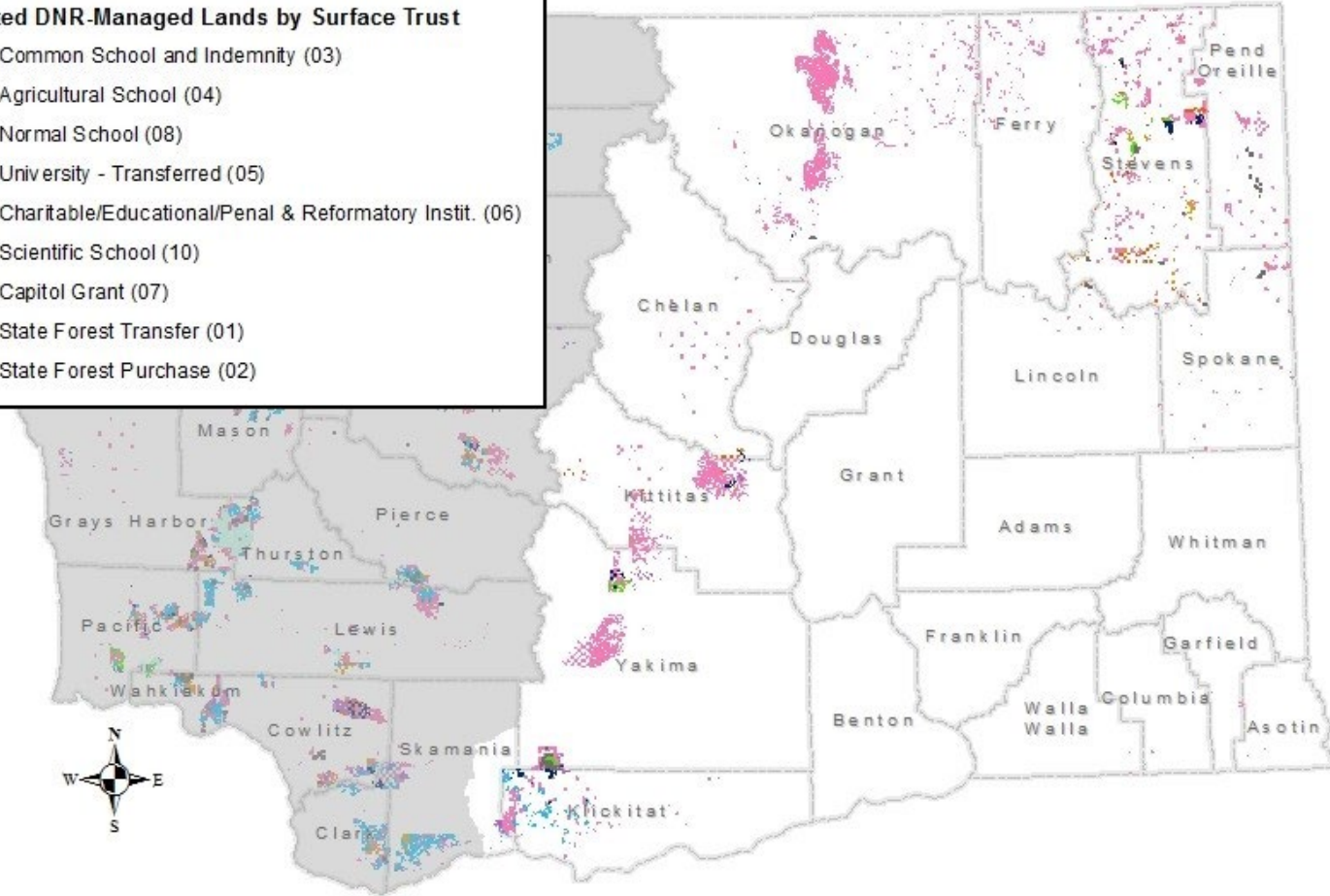
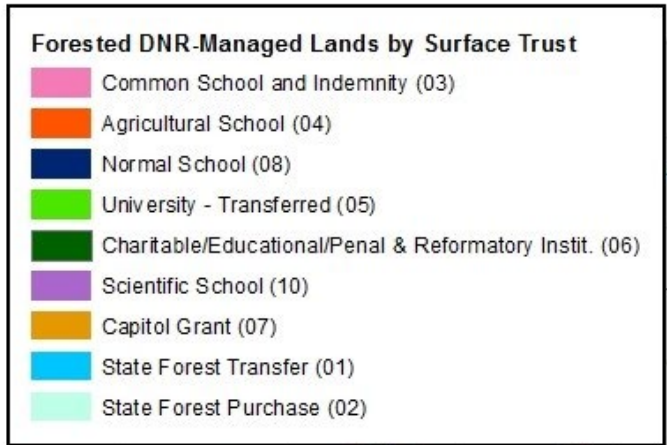
- Establishment of Sustainable Harvest Units (SHUs)
- Volume flow is regulated at the SHU level
- Map of SHUs used in 1996 for eastern Washington calculation



Policy for Sustainable Forests

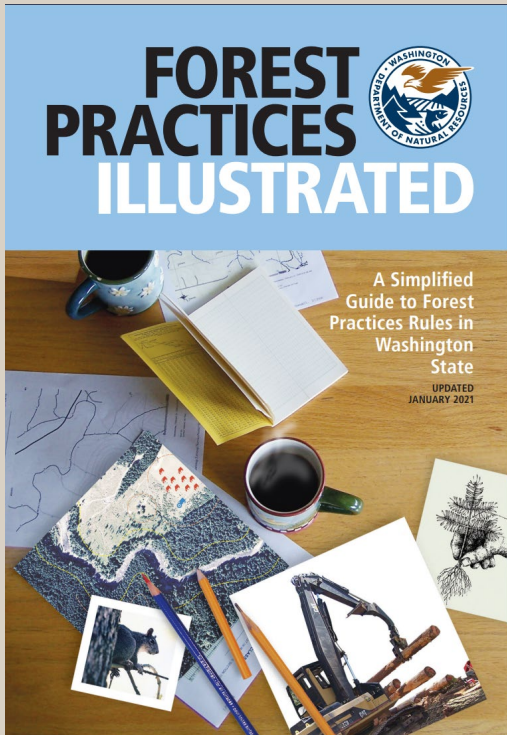


	Major Trusts*	Forested Eastside Acres
Federally Granted	Common School Trust (03)	554,000
	Agricultural School Trust (04)	27,100
	Normal School (08)	21,700
	University – Transferred (05)	14,000
	Charitable/Educational/Penal & Reformatory Instit. (06)	12,400
	Scientific School (10)	11,900
	Capitol Grant (07)	11,800
	State Forest	
	State Forest Transfer (01)	19,950
	State Forest Purchase (02)	80



*Excludes Escheat, University – Original, and Community Forests

Forest Practices Rules

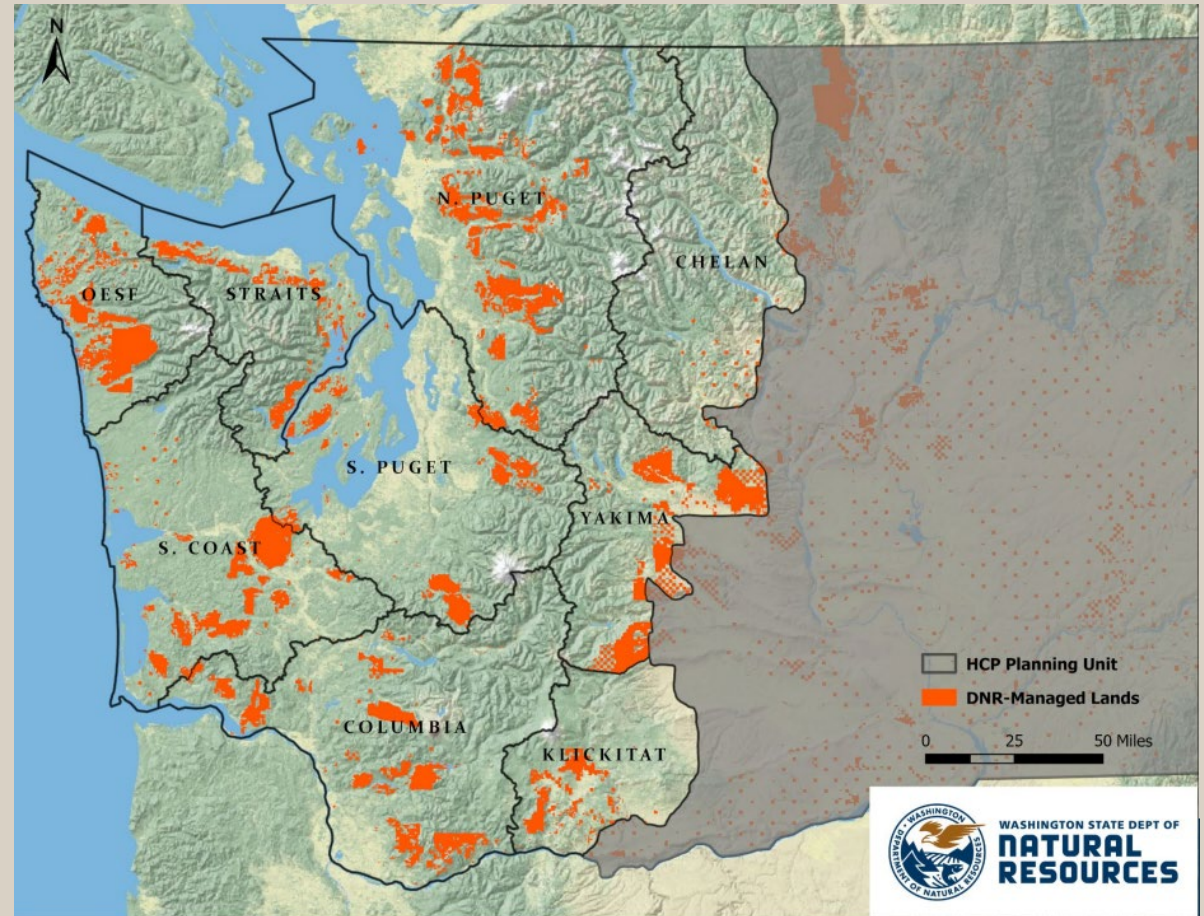
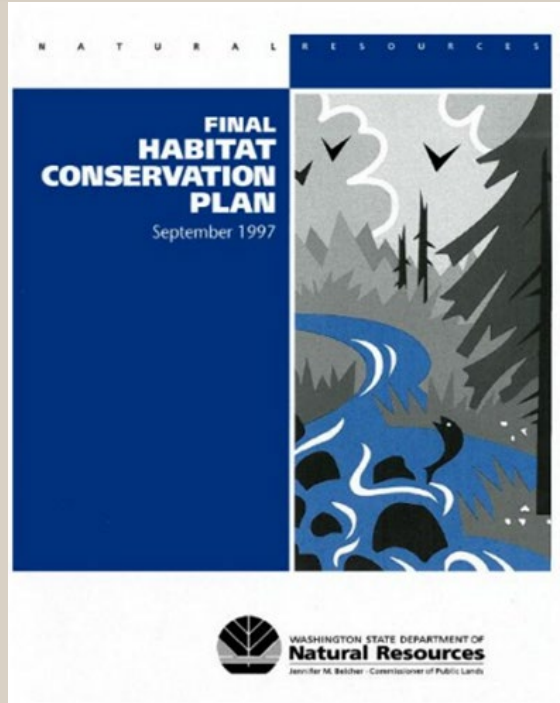


- Riparian buffer widths and harvest restrictions
- Wetland buffer widths
- Reforestation requirements
- Bull trout protection



Riparian buffers in the Little Pend Oreille Block, Stevens County

Habitat Conservation Plan (HCP)



Acres of eastside forested
DNR-managed trust land
covered under HCP

267,700

Acres of eastside forested
DNR-managed trust land
NOT covered under HCP

407,300

Habitat Conservation Plan

Northern spotted owl (NSO) habitat management

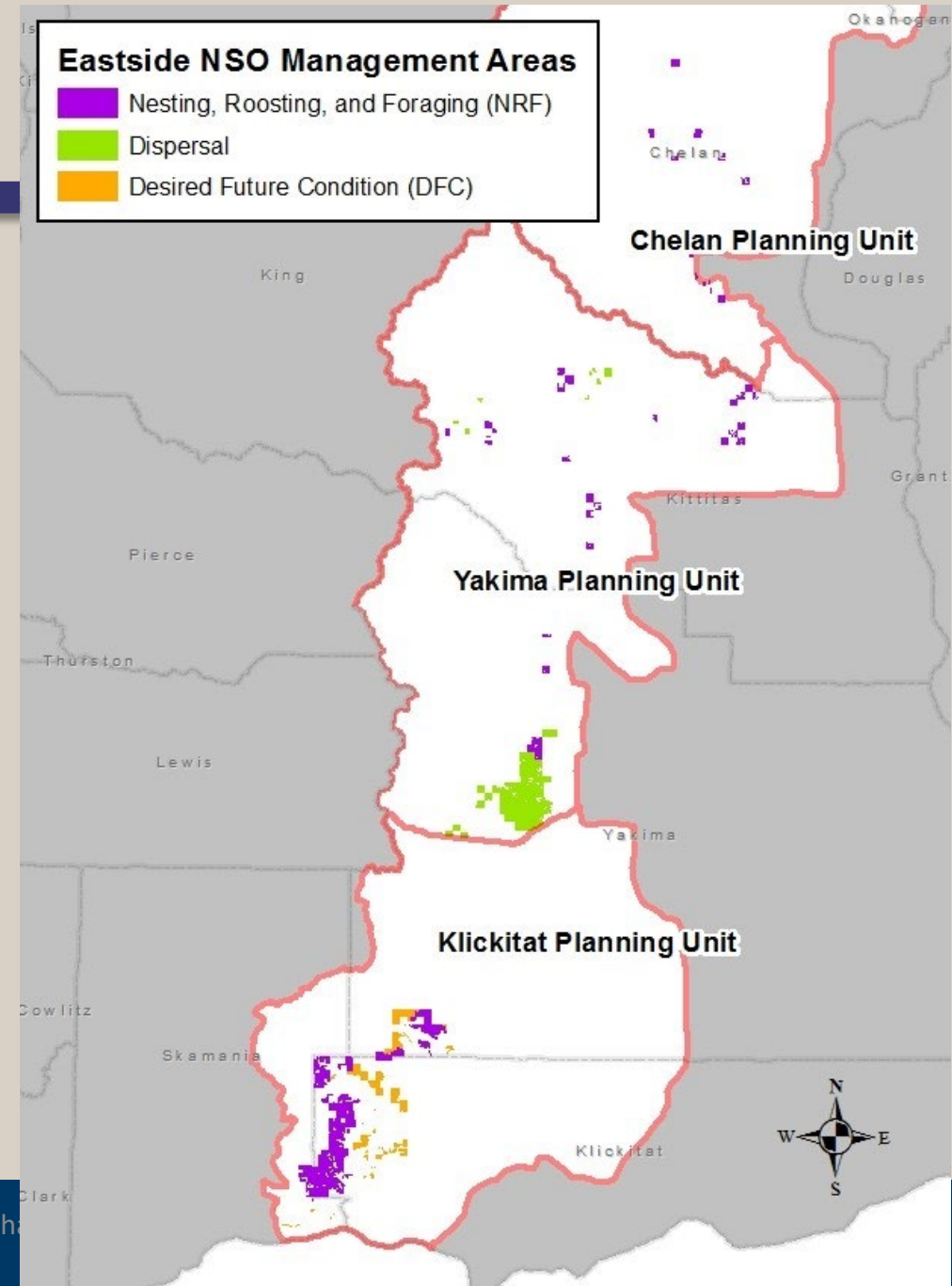
- Provide demographic support, maintenance of species distribution, and facilitation of dispersal
- Nesting, roosting, and foraging habitat and dispersal habitat are defined – percentage thresholds must be met in each Spotted Owl Management Unit (SOMU)
- Klickitat Amendment – 2004
 - Addresses forest health concerns in the Klickitat Planning Unit – original plan promoted overly dense stocking in certain types of stands
 - Allows for ecologically sustainable management based on vegetation type (Desired Future Condition or DFC)



Habitat Conservation Plan

Northern spotted owl (NSO) habitat management

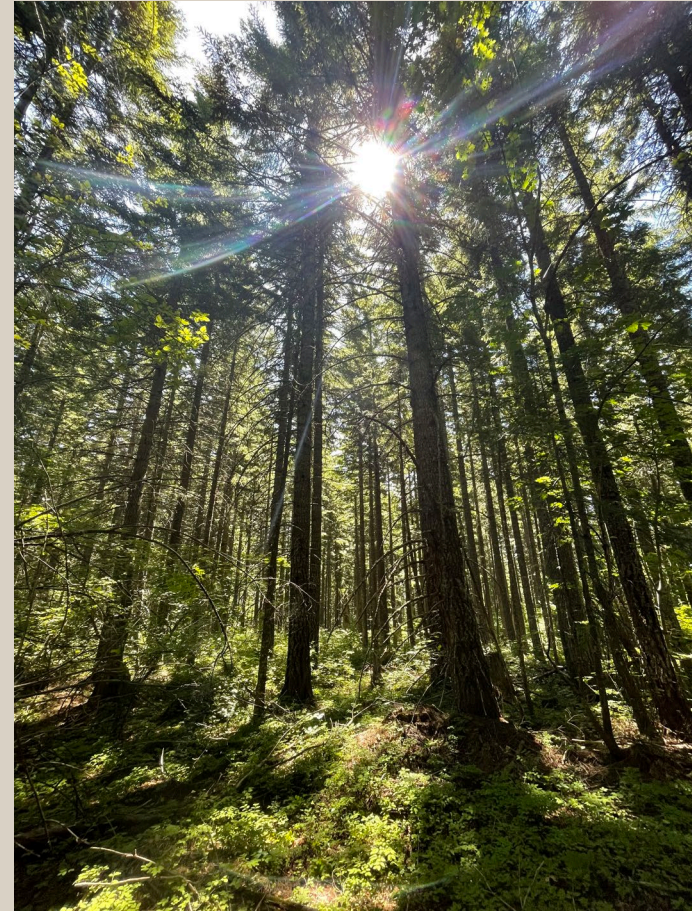
- Klickitat HCP Planning Unit
 - Includes DFC lands from Klickitat Amendment
- Yakima HCP Planning Unit
- Chelan HCP Planning Unit



Habitat Conservation Plan



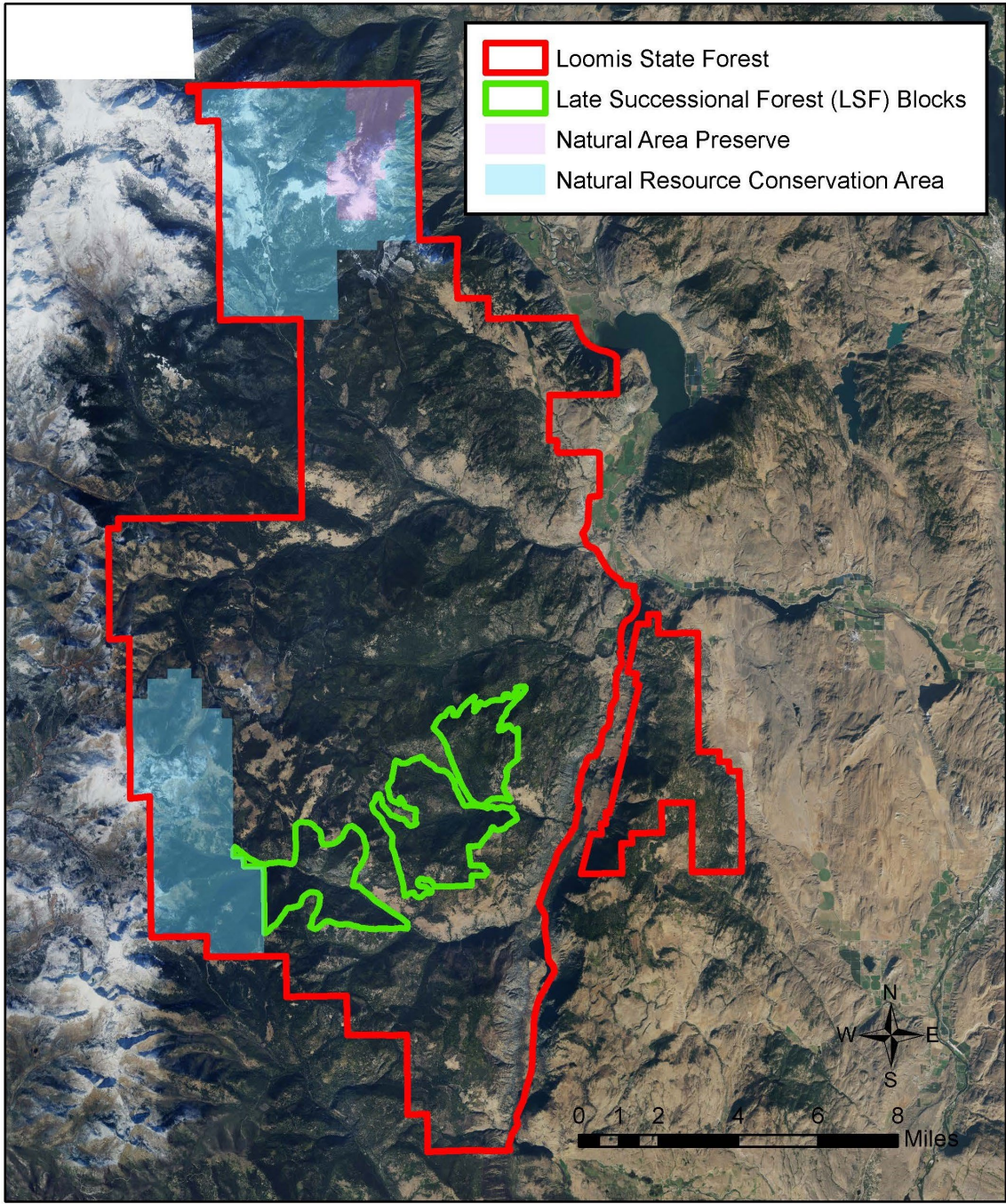
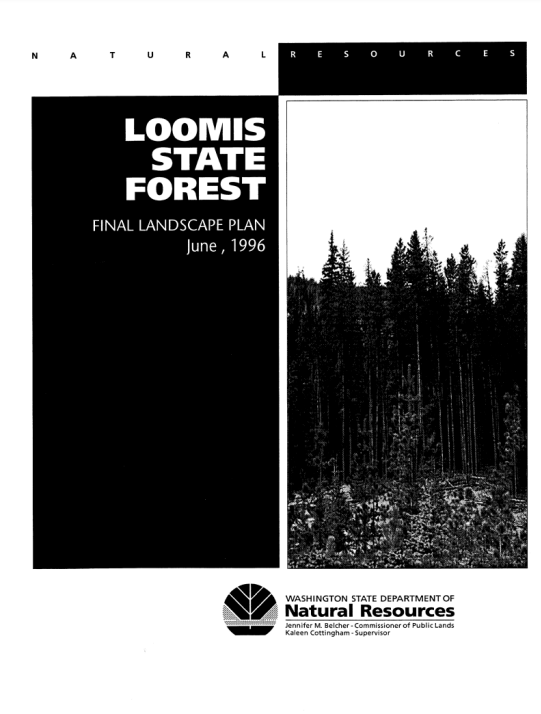
Nesting, Roosting, Foraging Habitat (NRF)



Dispersal Habitat

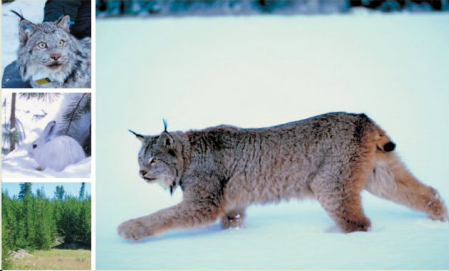


Loomis State Forest Plan



Lynx Habitat Management Plan

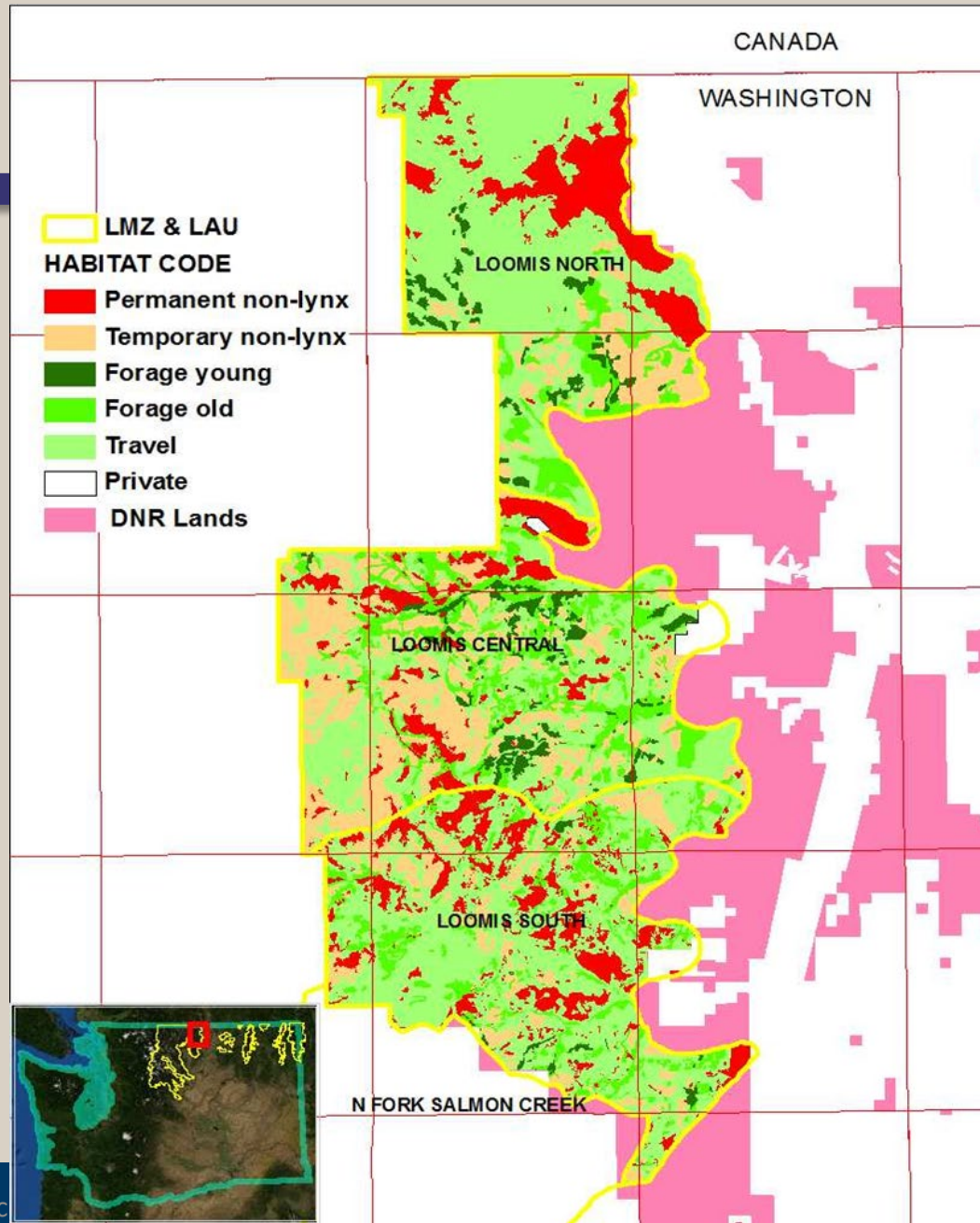
NATURAL RESOURCES



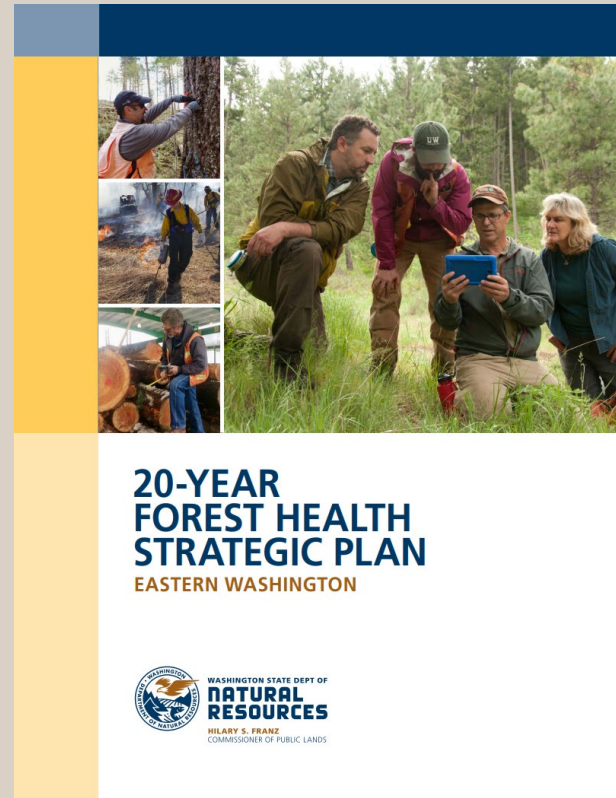
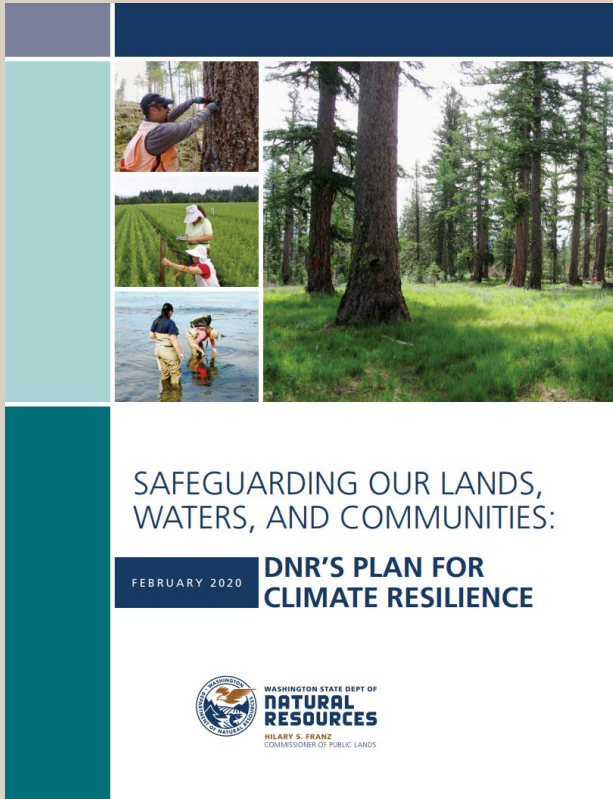
Lynx Habitat Management Plan

For DNR-Managed Lands

April 2006



Other Plans



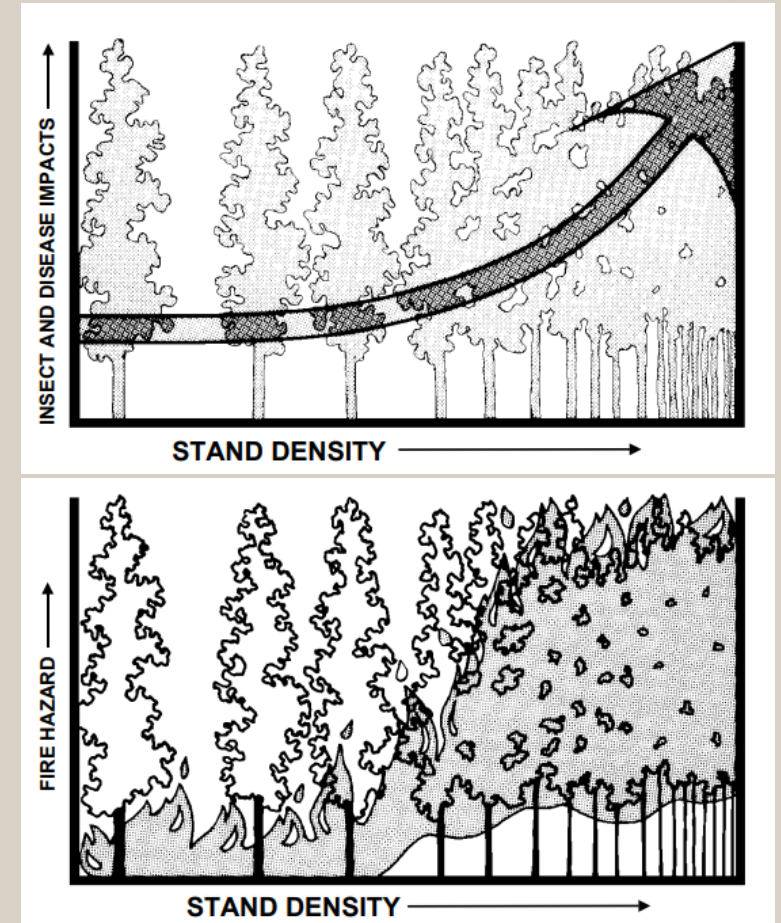
- 20 Year Forest Health Strategic Plan
- Plan for Climate Resilience

New Policy Considerations

- **Forest Resiliency Goal**
 - Track forest resiliency with a metric
 - The metric could be set as an explicit goal in the model
 - Stand density index versus maximum stand density index



Virginia Ridge, Okanogan County



(Powell, 1999)



New Policy Considerations

- **Forest Health Treatments**

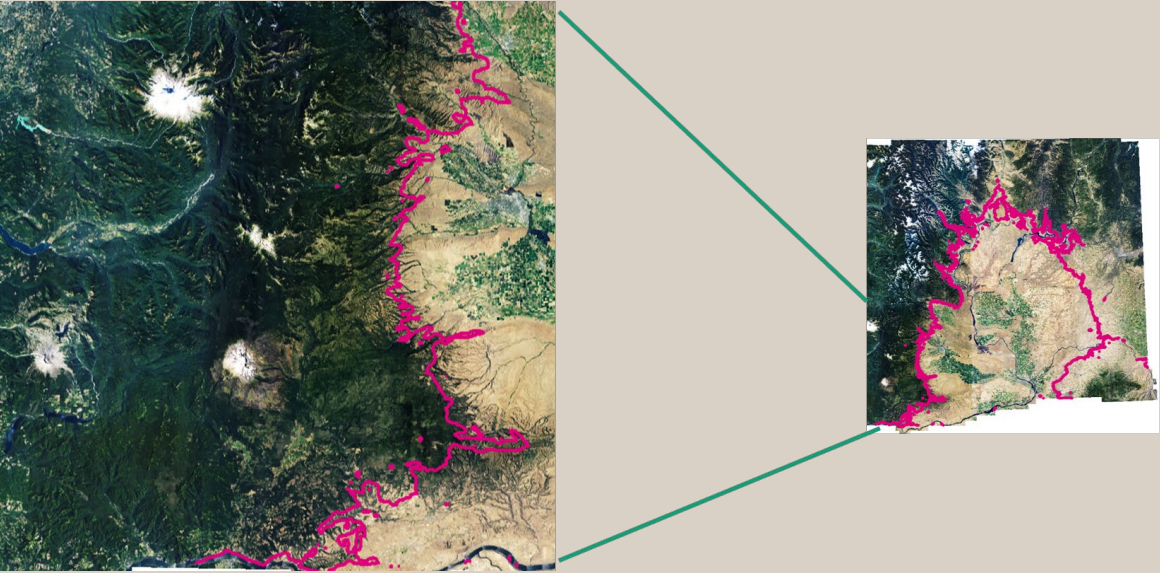
- Harvest in high priority landscapes where model harvest acreage does not align with strategic plan targets



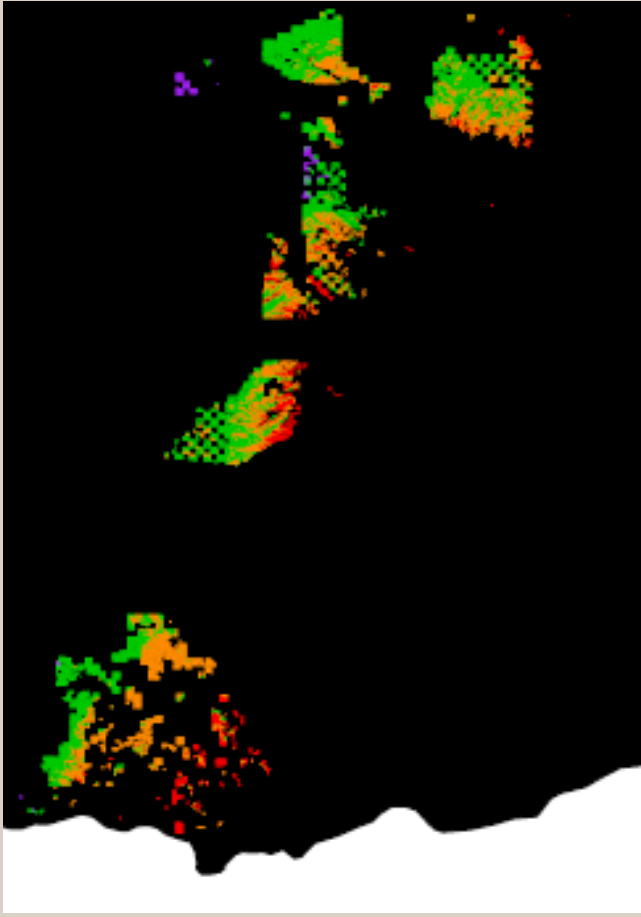
New Policy Considerations

Climate Change

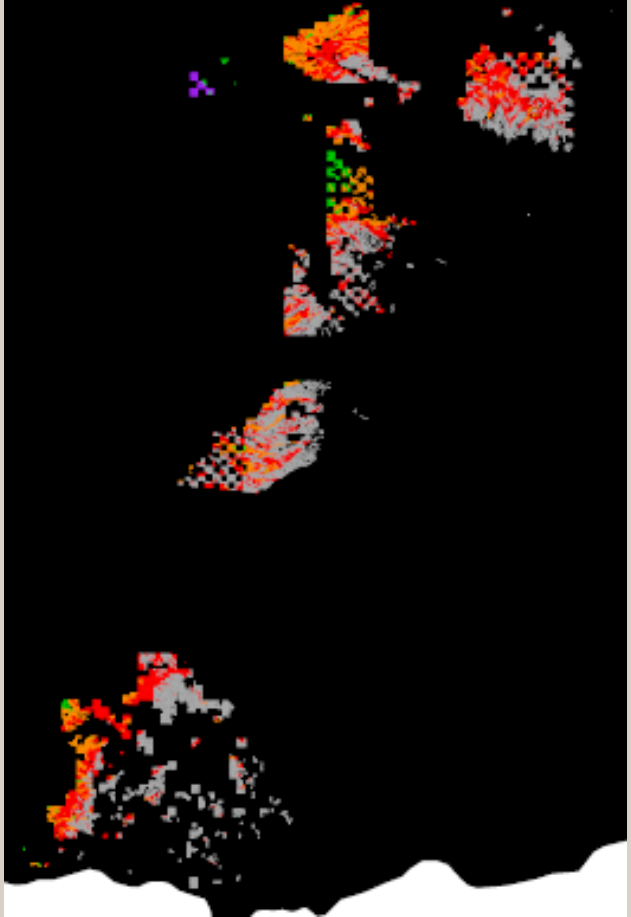
- Model changes to harvest intensity and species composition



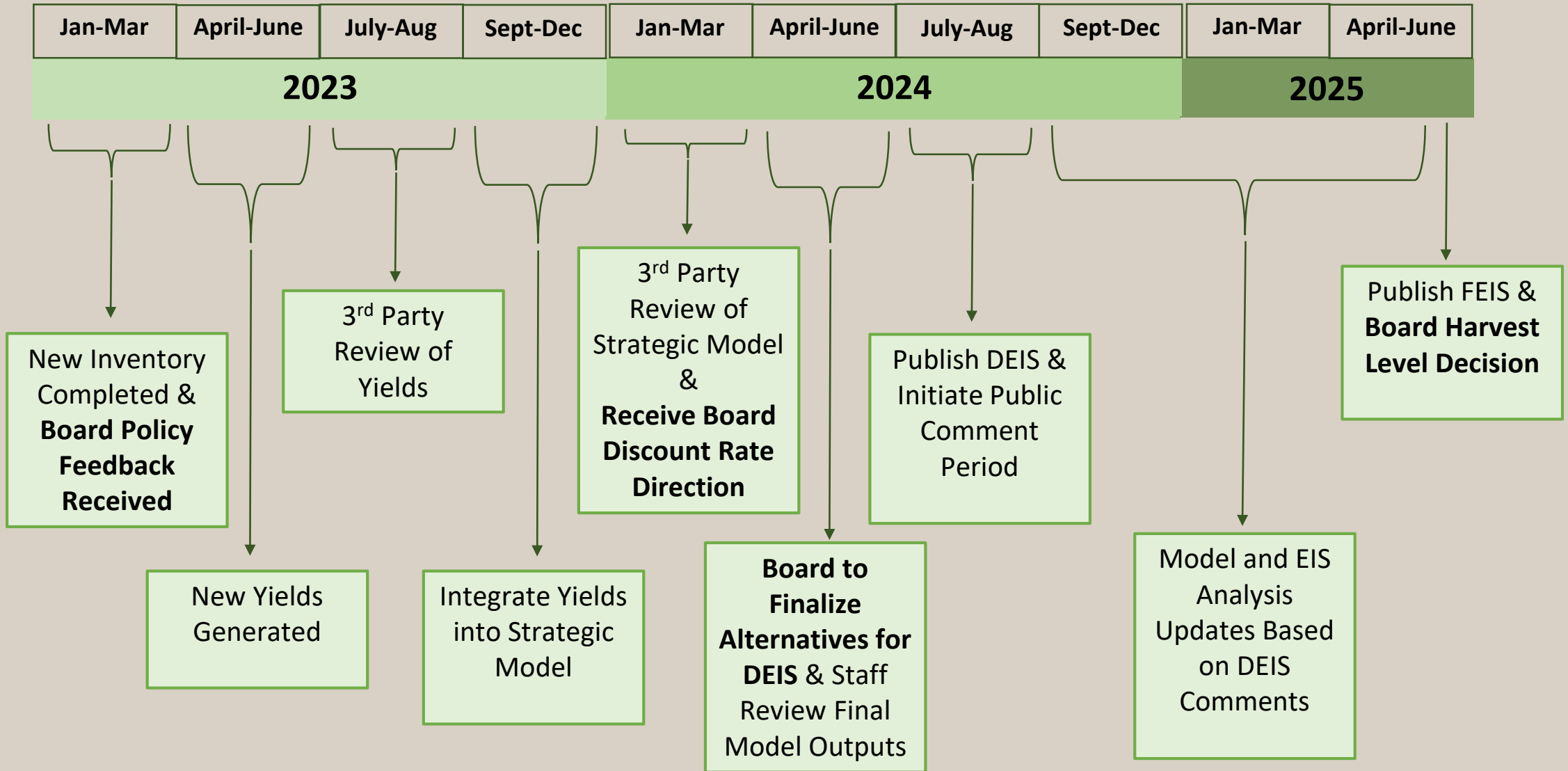
Current



2120



EWA SHC Timeline – High Level Milestones

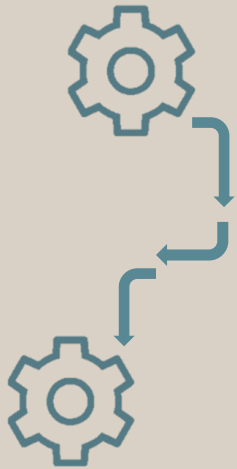


Next Steps in 2023



- Provide background on the forest estate model framework for eastern WA

- Provide an overview of incorporating climate impacts into the eastern WA model



- Provide technical updates as required under Resolution 1591 and feedback received from 3rd party review and TAC

Questions?



References



- Powell, D.C. 1999. Suggested Stocking Levels for Forest Stands in Northeastern Oregon and Southeastern Washington: An Implementation Guide for the Umatilla National Forest. Technical Publication F14-SO-TP-03-99: 10. USDA Forest Service, Umatilla National Forest, Pendleton, OR.

