

Expedited Processing of Forest Practice Applications

by

Kirk Willis, Assistant Region Manager, Pacific Cascade Region



February 13, 2008

Expedited Processing of Forest Practice Applications

- Reasons to Expedite
- Expediting and the Rules
- Steps for Achieving
- How the Process is Working



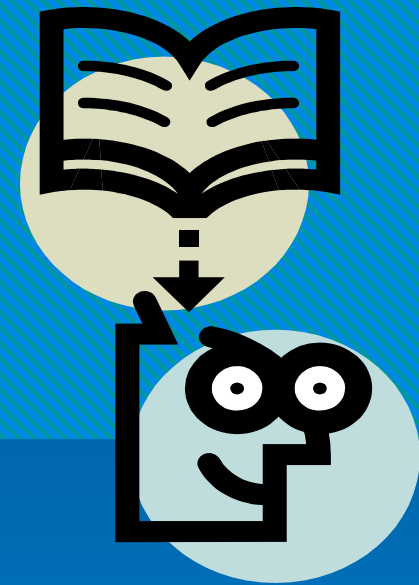
Reasons to expedite

- Address Landowner needs
- Recovery & Restoration
- Aids in prioritizing workloads



Expediting and the Rules

- All the forest practices rules are still in place
- Emphasized at TFW, staff meetings, etc.
- Continue to address protection of public resources



Steps for Achieving

- Education and outreach to applicants
- ID applications with “STORM DAMAGE”
- Goes to top of stack
- Field foresters use to prioritize reviews

How the process is working

Storm Applications
of days till approval

# of days	5	14	15	18	23	26	30
Dec	4	6					2
Jan	5	11	7	5	1	3	2
Total	9	17	7	5	1	3	4

Total Storm Apps. Approved = 46

70% approved in 15 days or less