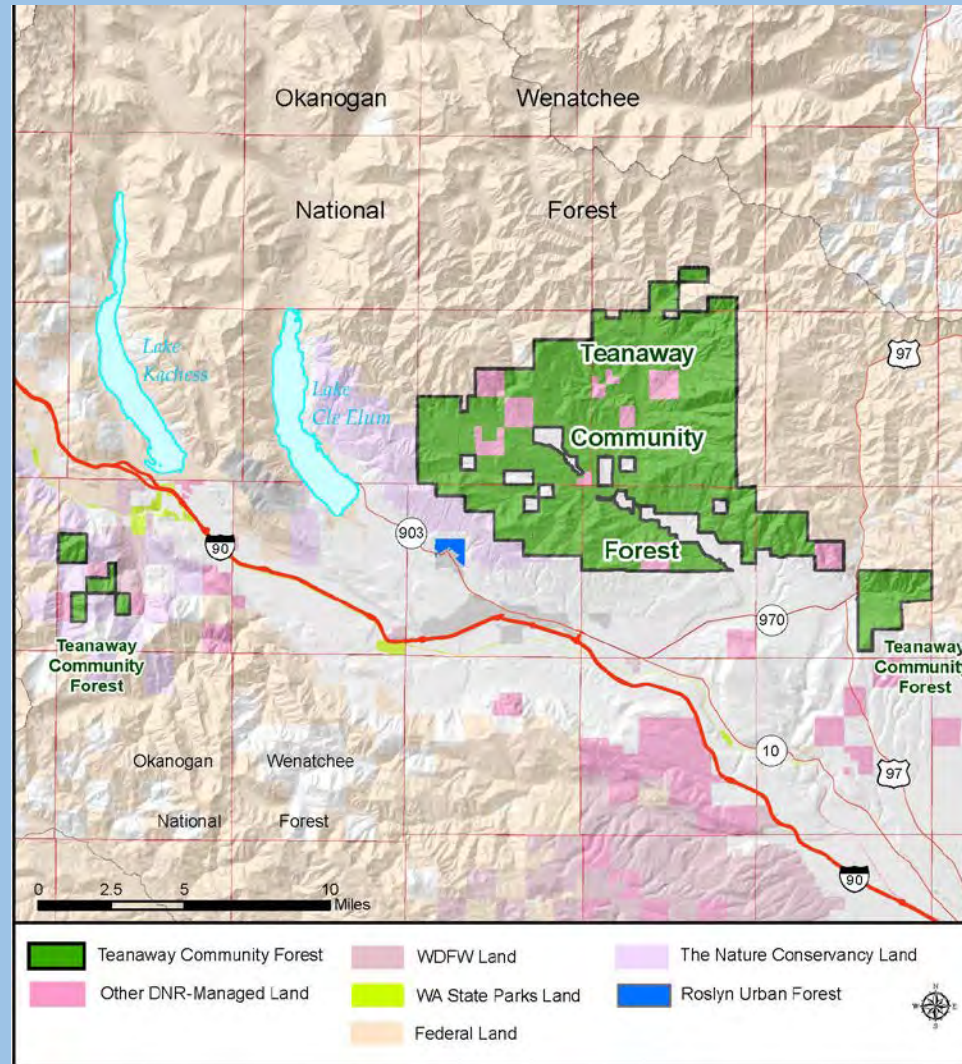


# Teanaway Community Forest Recreation Plan Recreation Land Suitability



# TEANAWAY COMMUNITY FOREST RECREATION PLAN

## Planning Area Map



## Recreation Land Suitability

*Identify and map areas with long- term limiting factors that affect recreation planning*

Biological Criteria

Soils & Geologic Criteria

**Management Criteria**



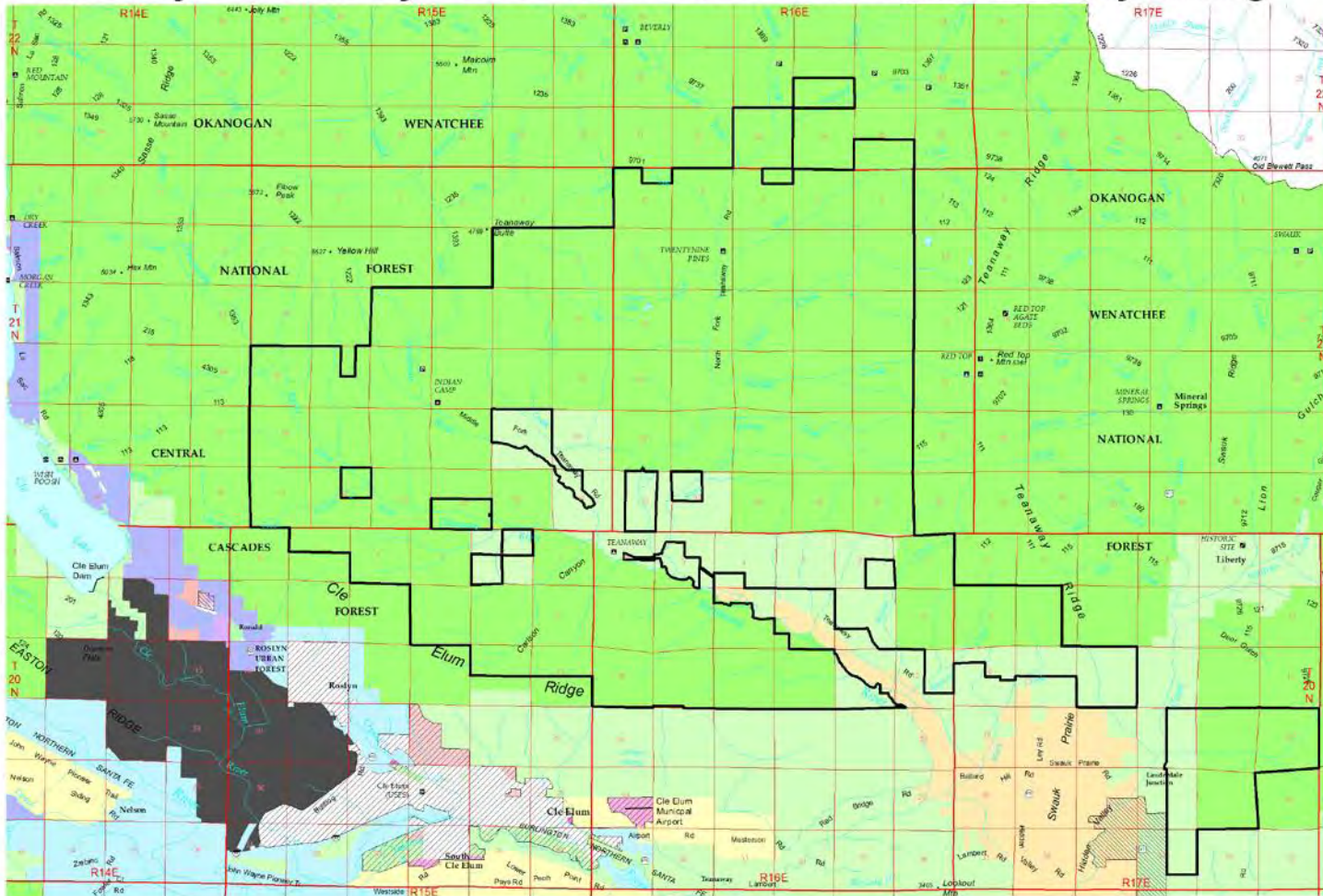
## Overview

- 1) *Context*
  - *Zoning*
  - *Adjacent Public Lands and Management Designations*
  - *Leases and Contracts*
  - *Road Access*
- 2) *Management criteria and reference layers*
- 3) *Suitability matrix*
- 4) *Composites of information by type*

# TEANAWAY COMMUNITY FOREST RECREATION PLAN

## Teanaway Community Forest Recreation Plan: Kittitas County Zoning

Prepared for  
June 8, 2017  
Planning Meeting



- Kittitas County Zoning**
- Zone Name**
- PUD Overlay
  - Commercial Forest
  - Forest and Range
  - Agriculture 20
  - Agriculture 3
  - Agriculture 5
  - Master Planned Resort
  - Planned Unit Development
  - Residential
  - Residential 2
  - Rural 3
  - Rural 5
  - Rural Recreation
  - Urban Growth Area
  - Urban Residential

- Planning Area Boundary
  - City Limits (Census 2010)
  - County Boundaries
- Recreation Symbols**
- Boat Launch
  - Camping
  - Picnic Area
  - Point of Interest
  - Ranger Station
  - Fire Lookout
  - Parking / Trailhead



Extreme care was used during the compilation of this map to insure accuracy. However, due to changes in ownership and the need to rely on outside information, the Department of Natural Resources cannot accept responsibility for errors or omissions. Therefore, there are no warranties which accompany this material.

**DRAFT**  
This map is for planning / discussion purposes only. Subject to change without notice. Created: 3/22/17

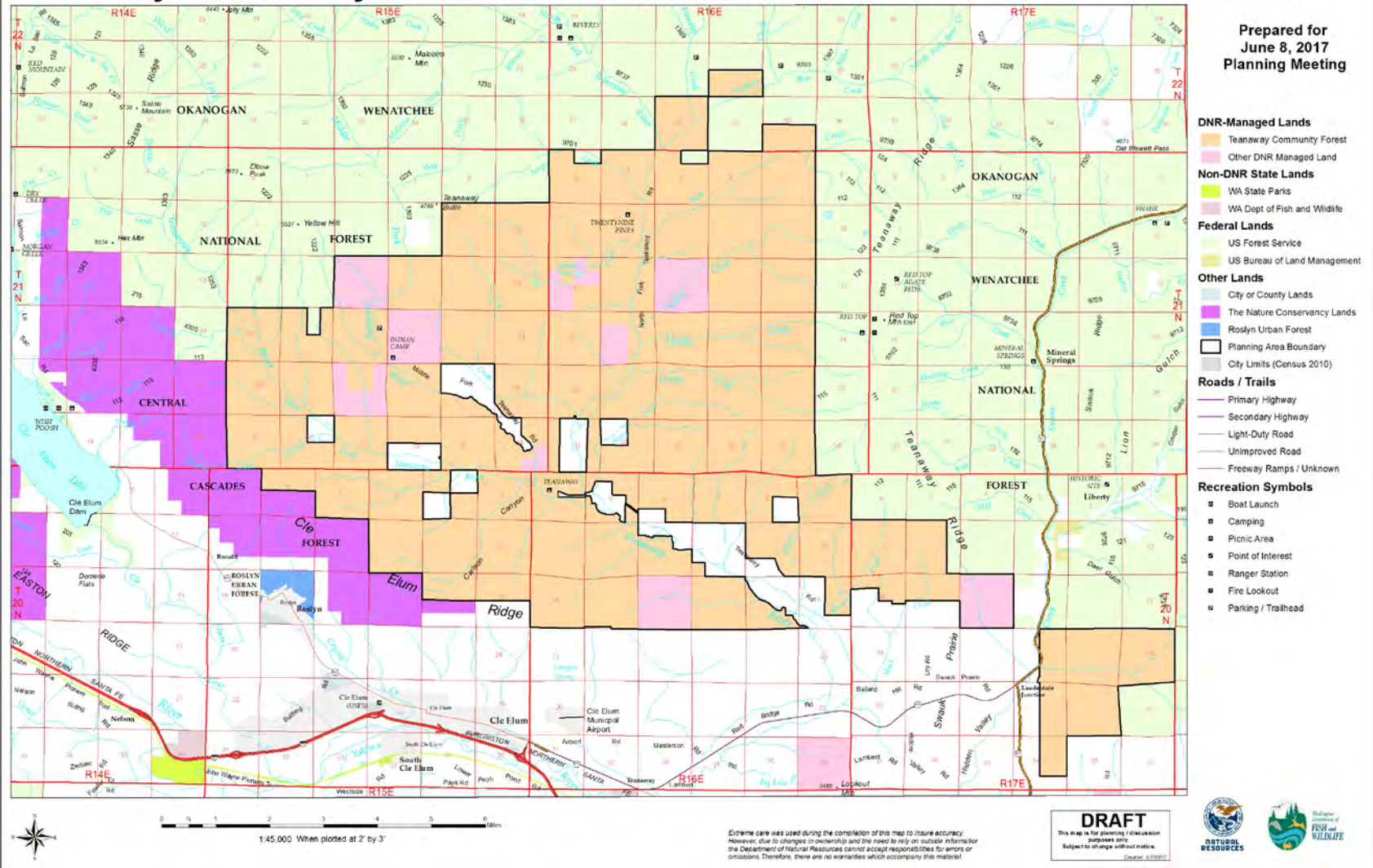




# TEANAWAY COMMUNITY FOREST RECREATION PLAN

## Teanaway Community Forest Recreation Plan: Adjacent Public Lands and DNR Management Designations

Prepared for  
June 8, 2017  
Planning Meeting

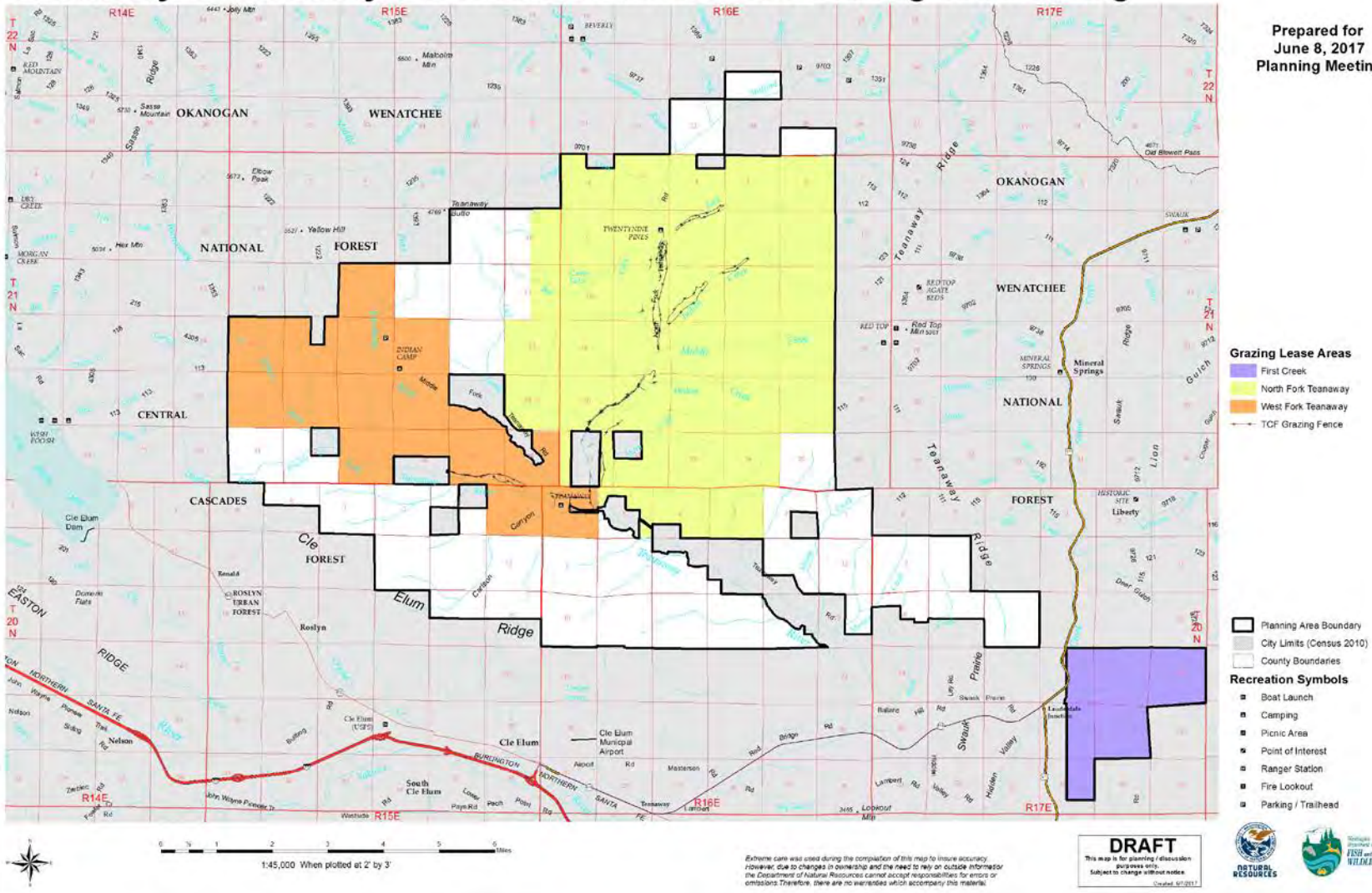




# TEANAWAY COMMUNITY FOREST RECREATION PLAN

## Teanaway Community Forest Recreation Plan: Grazing and Fencing

Prepared for  
June 8, 2017  
Planning Meeting

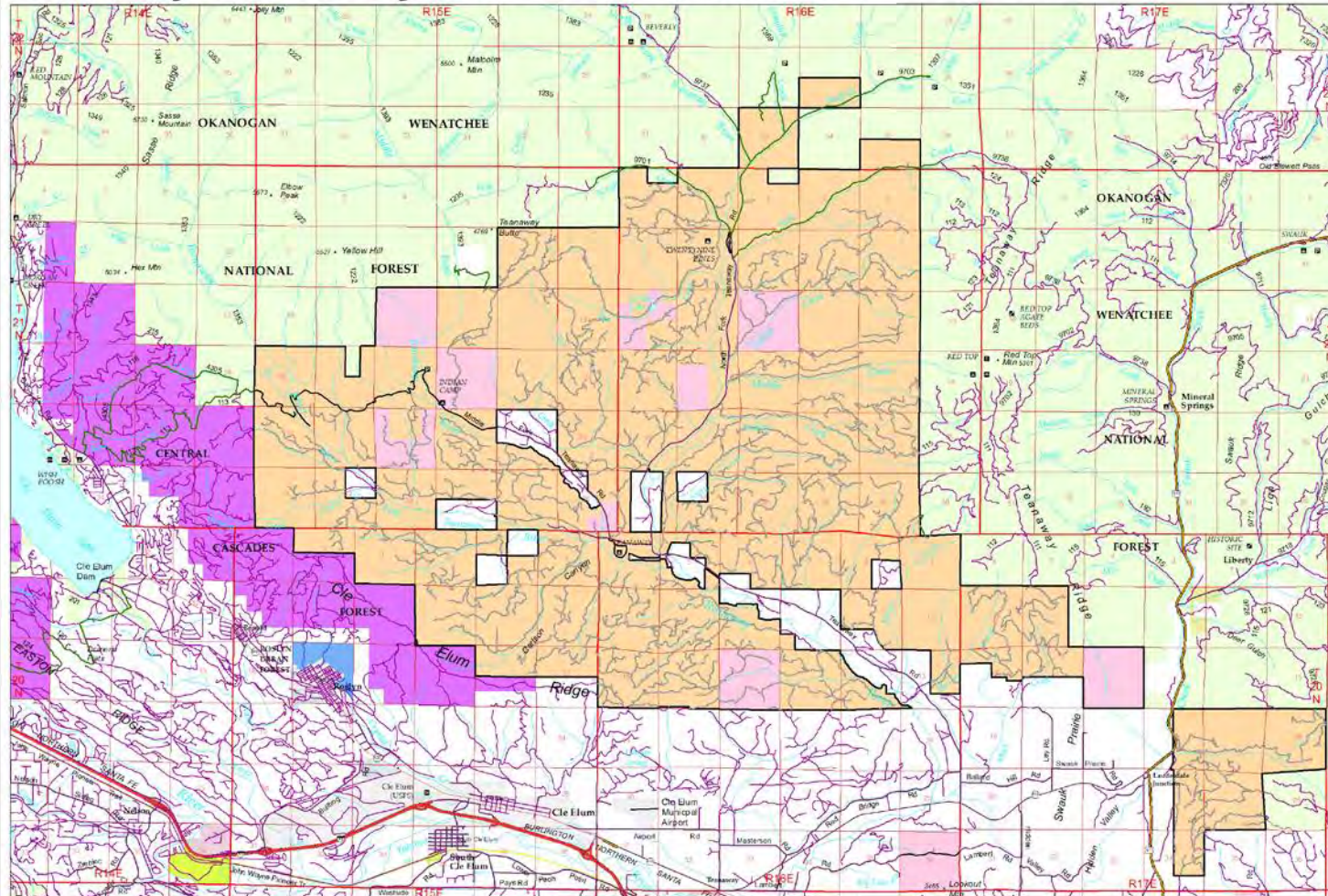




# TEANAWAY COMMUNITY FOREST RECREATION PLAN

## Teanaway Community Forest Recreation Plan: Road Access

Prepared for  
June 8, 2017  
Planning Meeting



- Roads**
- DNR - Open Year Round
  - DNR - Closed
  - DNR - Unknown
  - US Forest Service
  - City or County Road
  - Private or Unknown
- DNR-Managed Lands**
- Teanaway Community Forest
  - Other DNR Managed Land
- Non-DNR State Lands**
- WA State Parks
  - WA Dept of Fish and Wildlife
- Federal Lands**
- US Forest Service
  - US Bureau of Land Management
- Other Lands**
- City or County Lands
  - The Nature Conservancy Lands
  - Roslyn Urban Forest
  - Planning Area Boundary
  - City Limits (Census 2010)
- Recreation Symbols**
- Boat Launch
  - Camping
  - Picnic Area
  - Point of Interest
  - Ranger Station
  - Fire Lookout
  - Parking / Trailhead



1:45,000 When plotted at 2" by 3"

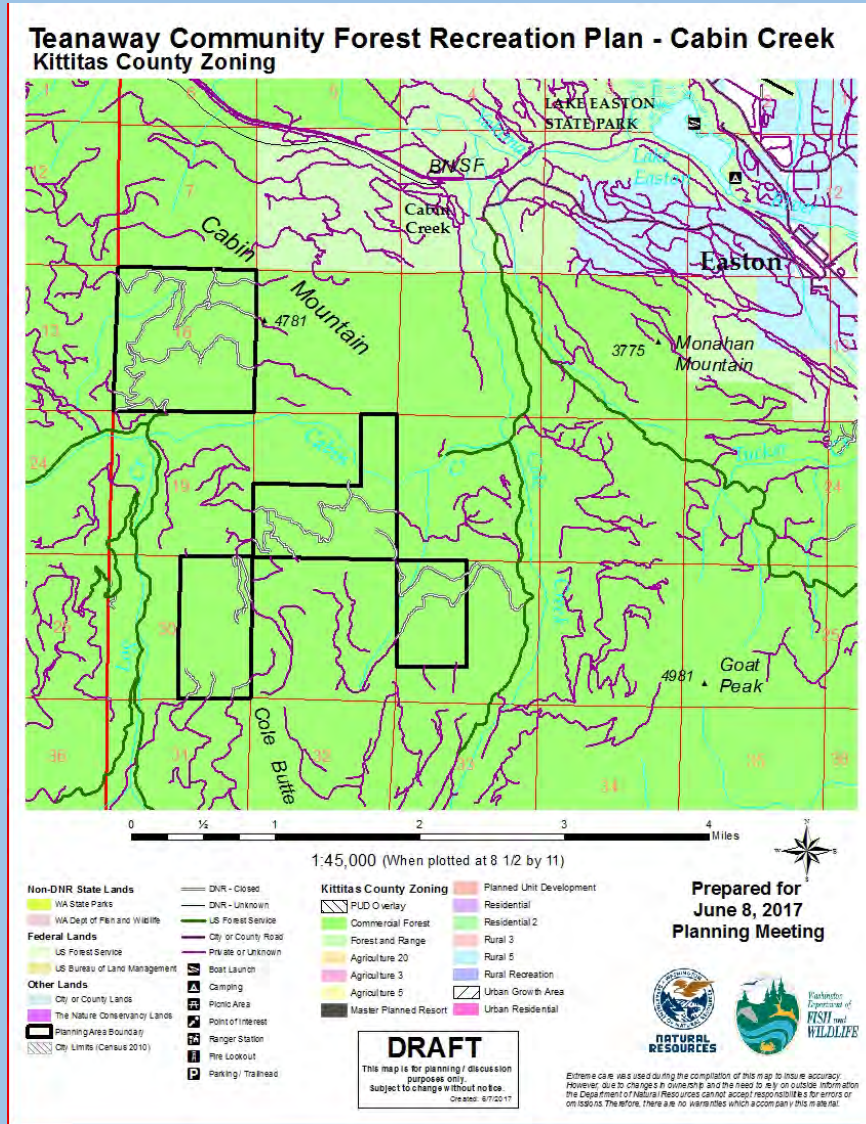
Extreme care was used during the compilation of this map to insure accuracy however, due to changes in ownership and the need to rely on outside information the Department of Natural Resources cannot accept responsibility for errors or omissions. Therefore, there are no warranties which accompany this material.

**DRAFT**  
This map is for planning discussion purposes only. Subject to change without notice. Created: 07/2017

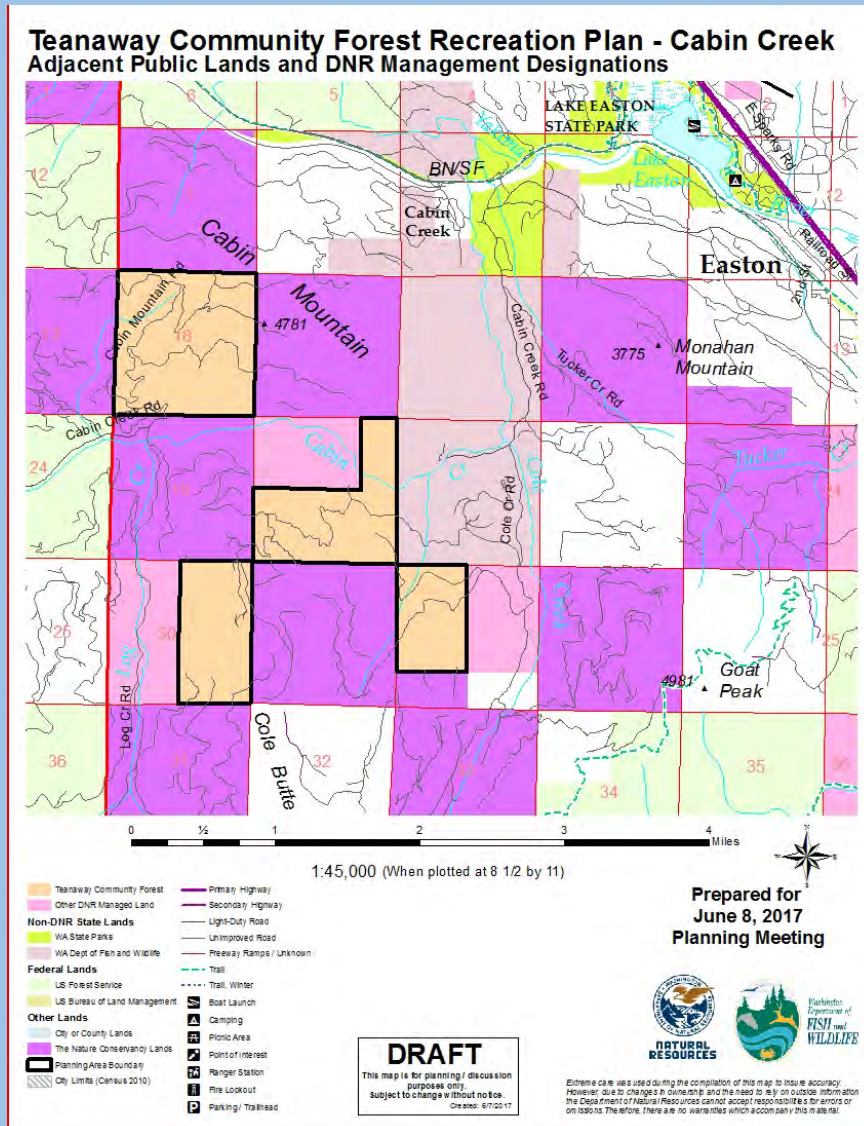




# TEANAWAY COMMUNITY FOREST RECREATION PLAN

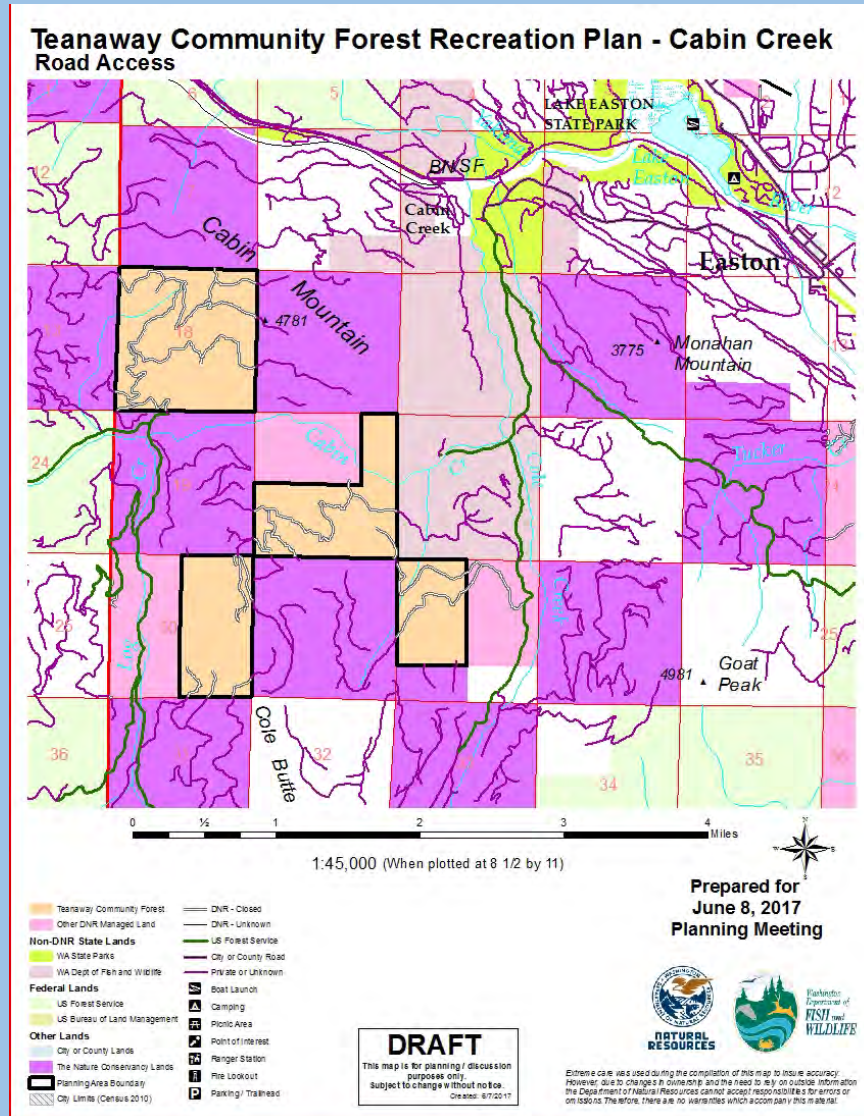


# TEANAWAY COMMUNITY FOREST RECREATION PLAN





# TEANAWAY COMMUNITY FOREST RECREATION PLAN



## Terms for Management Suitability

**Low Suitability** = Areas with long-term considerations. These primarily include social/political concerns and areas with leases/easements

**Moderate Suitability** = Areas where less mitigation and potential for impact exists compared to low suitability



## Management Criteria

- *Communication and Management Sites*
- *Rock Sources (existing and future)*
- *Utility Easements*
- *Land Adjacent to Other Properties*
- *Wells and Water Sources*
- *Riparian Restoration Areas*
- *Cultural and Archeological Resources*

*\*These project-scale considerations are not intended to replace site specific project analysis. This list is based on information available to date.*

# TEANAWAY COMMUNITY FOREST RECREATION PLAN

## Teanaway Recreation Plan - Management Suitability Matrix

### MANAGEMENT CRITERIA - LONG TERM CONSIDERATIONS

	Non-Motorized Trails	Motorized Trails	Facilities
<b>Communication and Management Sites</b>	Low Suitability within 300' Communication Sites Low Suitability within 200' Management Sites	Low Suitability within 300' Communication Sites Low Suitability within 200' Management Sites	Low Suitability within 1000' Communication Sites Low Suitability within 200' Management Sites
<b>Rock Sources (existing and future)</b>	Not Suitable on site and within clearing limits Low Suitability within 500'	Not Suitable on site and within clearing limits Low Suitability within 500'	Not Suitable on or within clearing limits Low Suitability within 1000' if blasting occurs, management access, etc.
<b>Utility Easements</b>	Low Suitability within Utility leased areas	Low Suitability within Utility leased areas	Low Suitability within Utility leased areas
<b>Land Adjacent to Other Properties</b>	Low Suitability 200'	Low Suitability - 200' Forest Land Low Suitability - 900' Residential	Low Suitability 900'
<b>Wells and Water Sources</b>	Consult with Municipality	Consult with Municipality	Consult with Municipality
<b>Riparian Restoration Areas</b>	Moderate Suitability	Low Suitability	Low Suitability
<b>Cultural and Archeological Resources</b>	Low Suitability	Low Suitability	Low Suitability

#### Definitions

**Low Suitability**= Areas with long-term limiting factors. These primarily include social/political concerns and areas with leases/easements

**Moderate Suitability**= Areas where less mitigation and potential for concern exists compared to low suitability



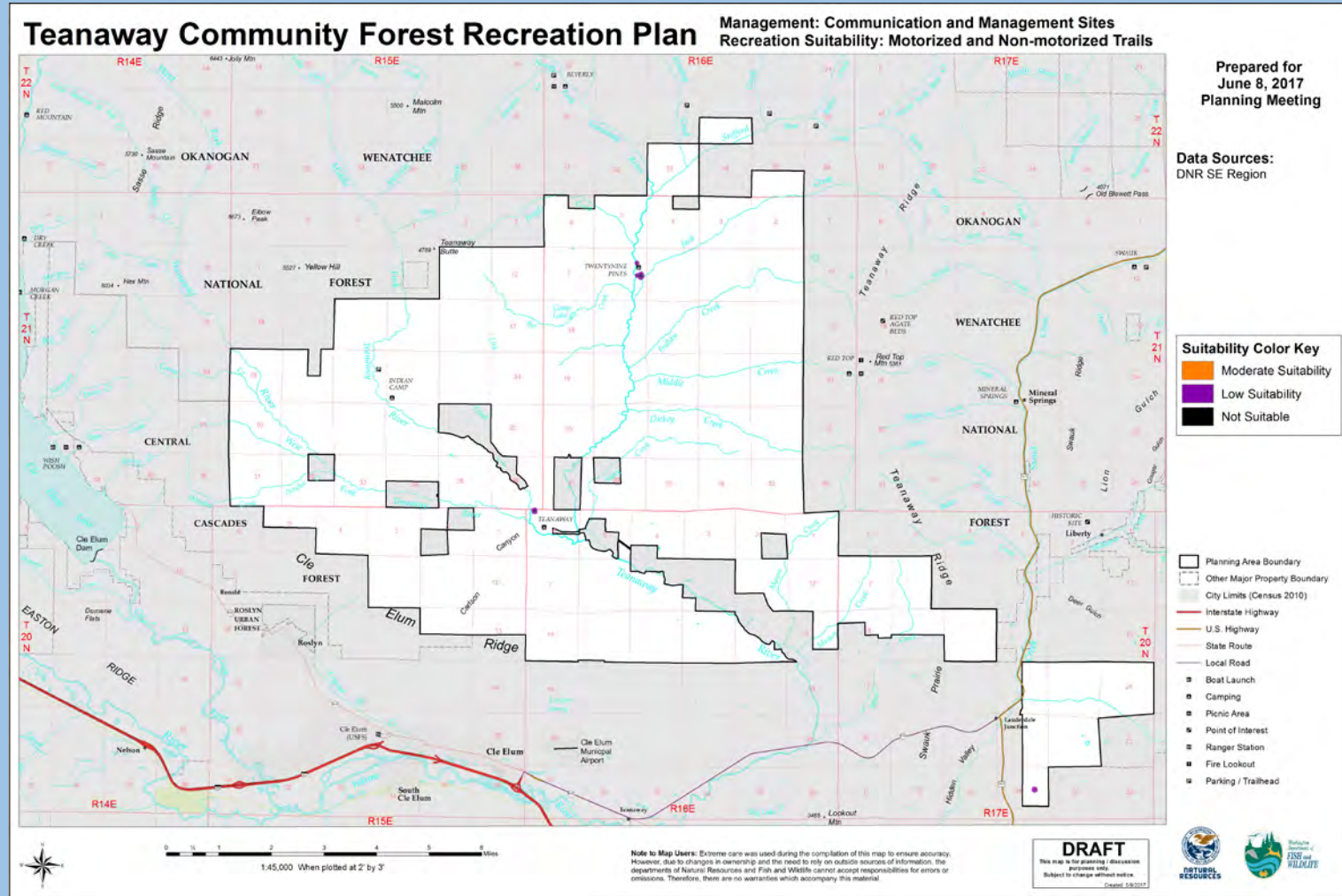
# TEANAWAY COMMUNITY FOREST RECREATION PLAN

## *Communication and Management Sites*



# TEANAWAY COMMUNITY FOREST RECREATION PLAN

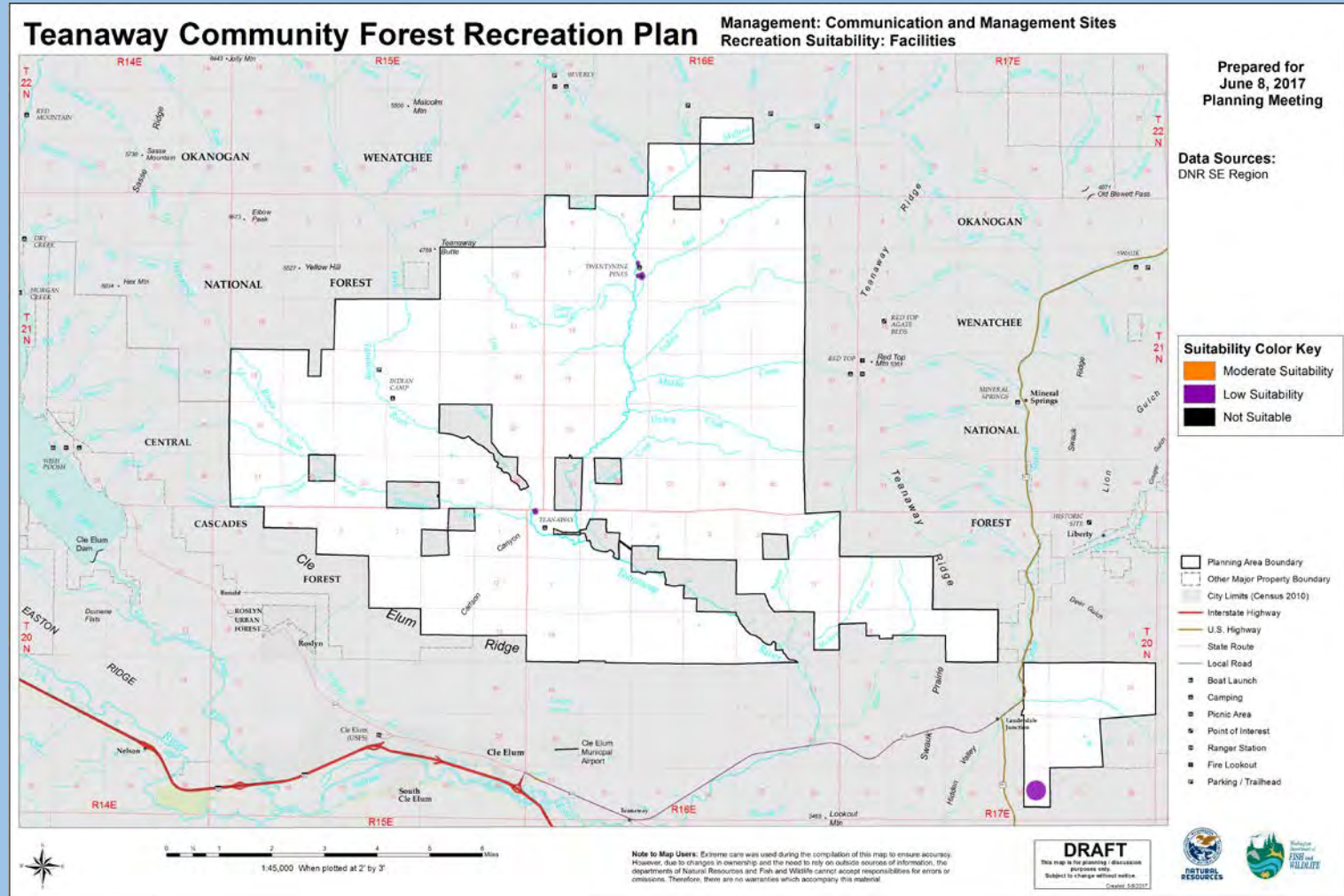
Communication  
and  
Management  
Sites:  
  
Trails





# TEANAWAY COMMUNITY FOREST RECREATION PLAN

Communication  
and  
Management  
Sites:  
  
Facilities



# TEANAWAY COMMUNITY FOREST RECREATION PLAN

## *Rock Sources (existing and future)*

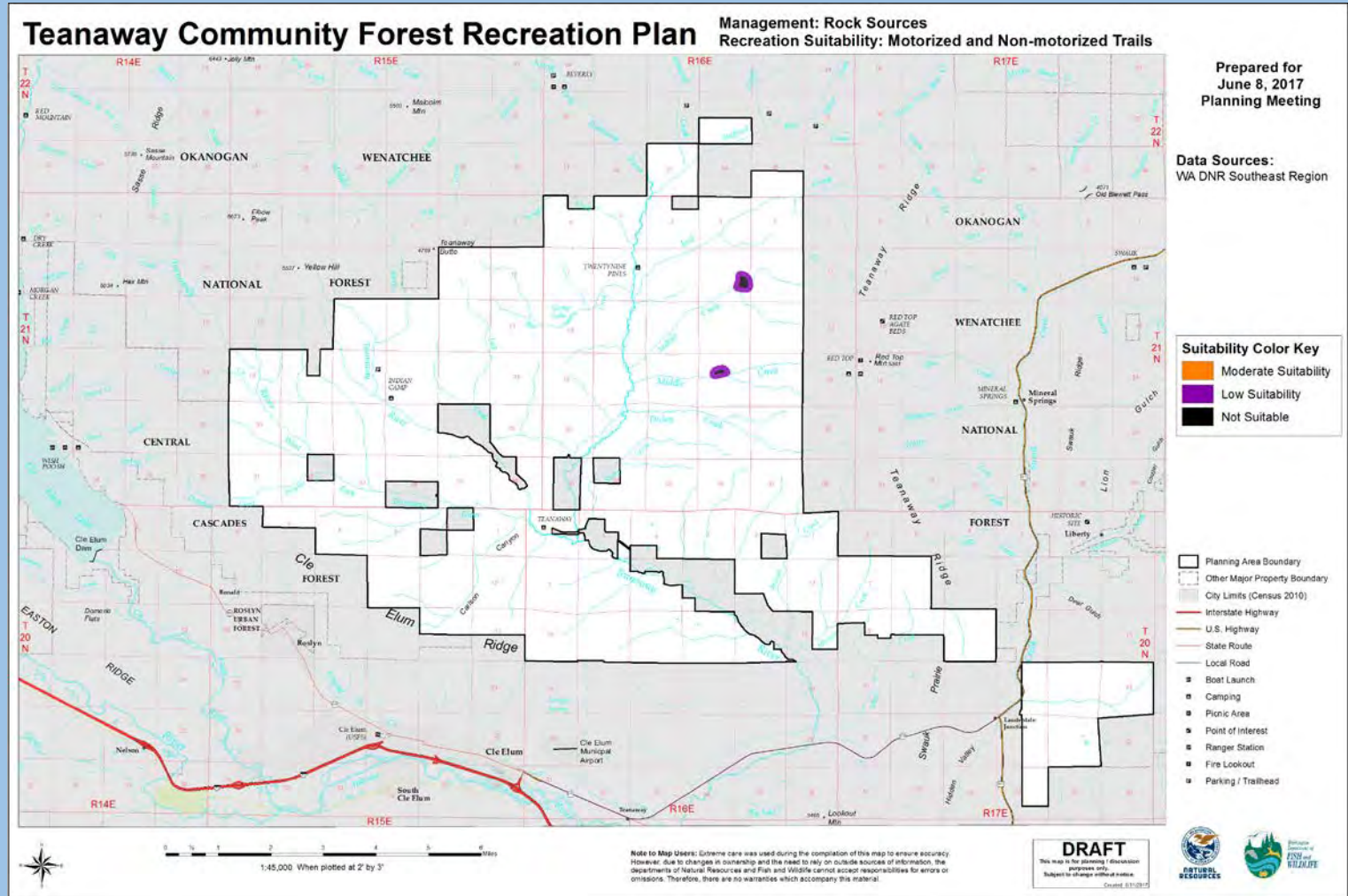




# TEANAWAY COMMUNITY FOREST RECREATION PLAN

Rock Sources  
(existing and  
future):

Trails



Teanaway Community Forest



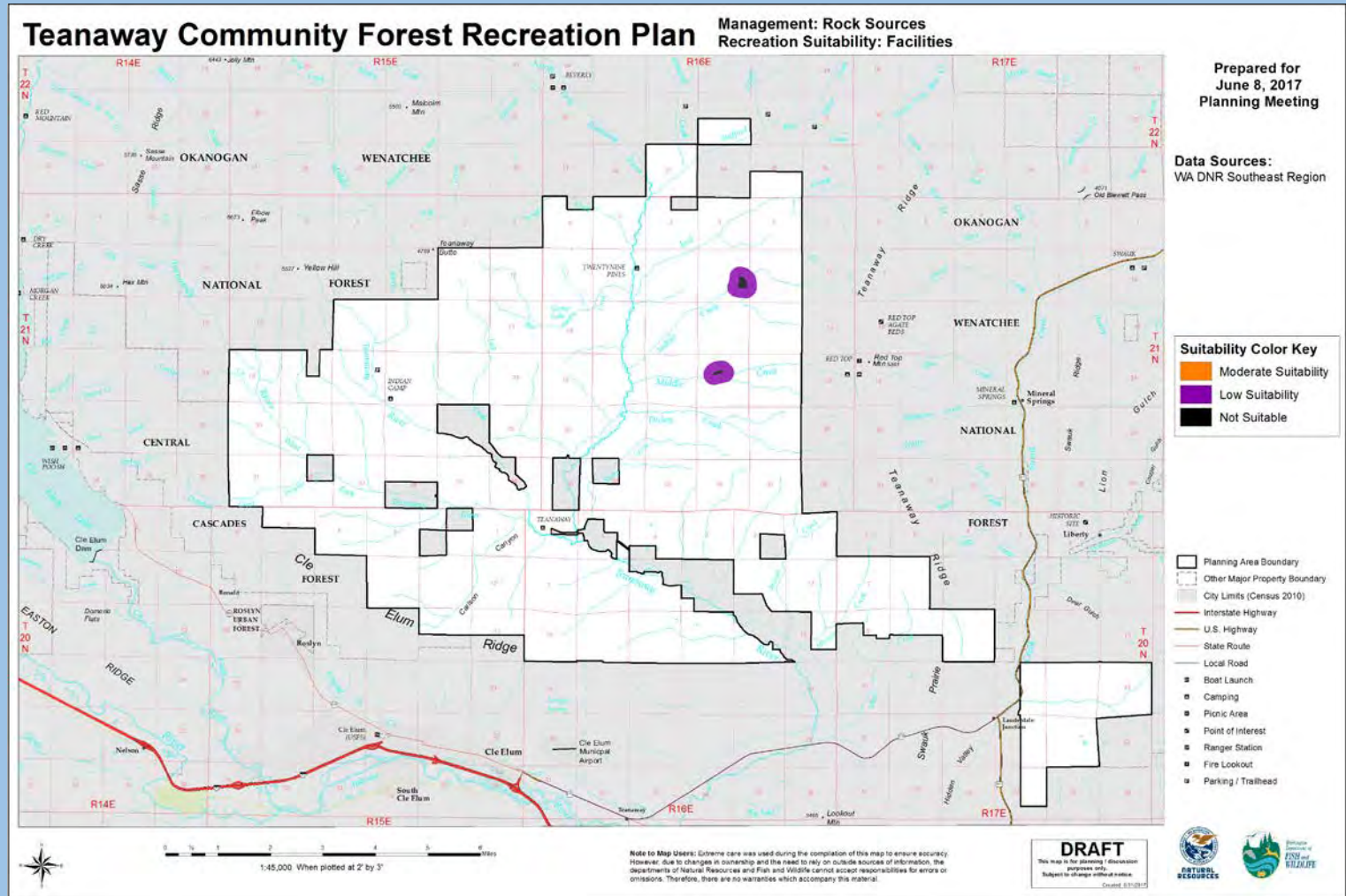
WASHINGTON STATE DEPARTMENT OF  
**NATURAL RESOURCES**



# TEANAWAY COMMUNITY FOREST RECREATION PLAN

Rock Sources  
(existing and  
future):

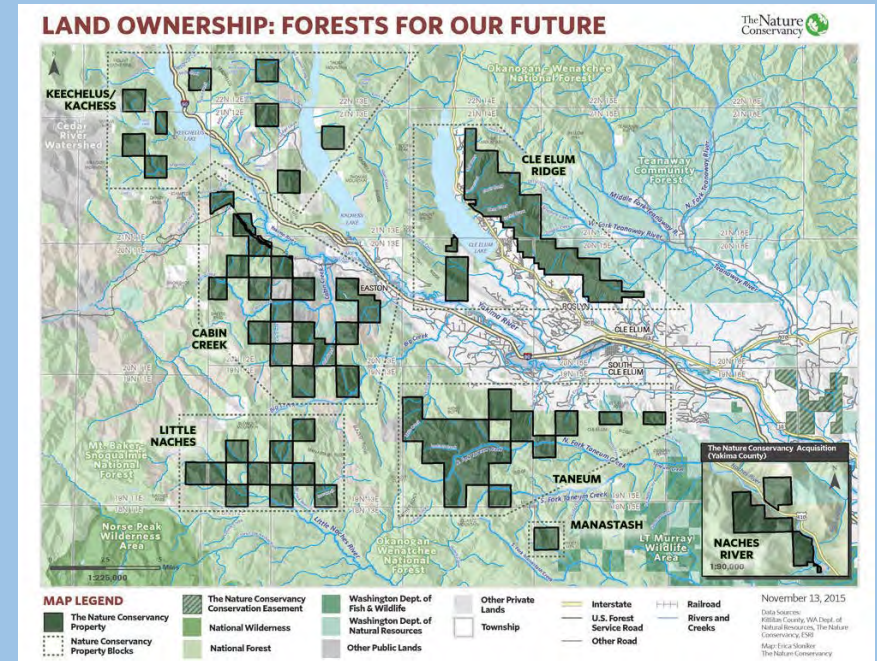
Facilities





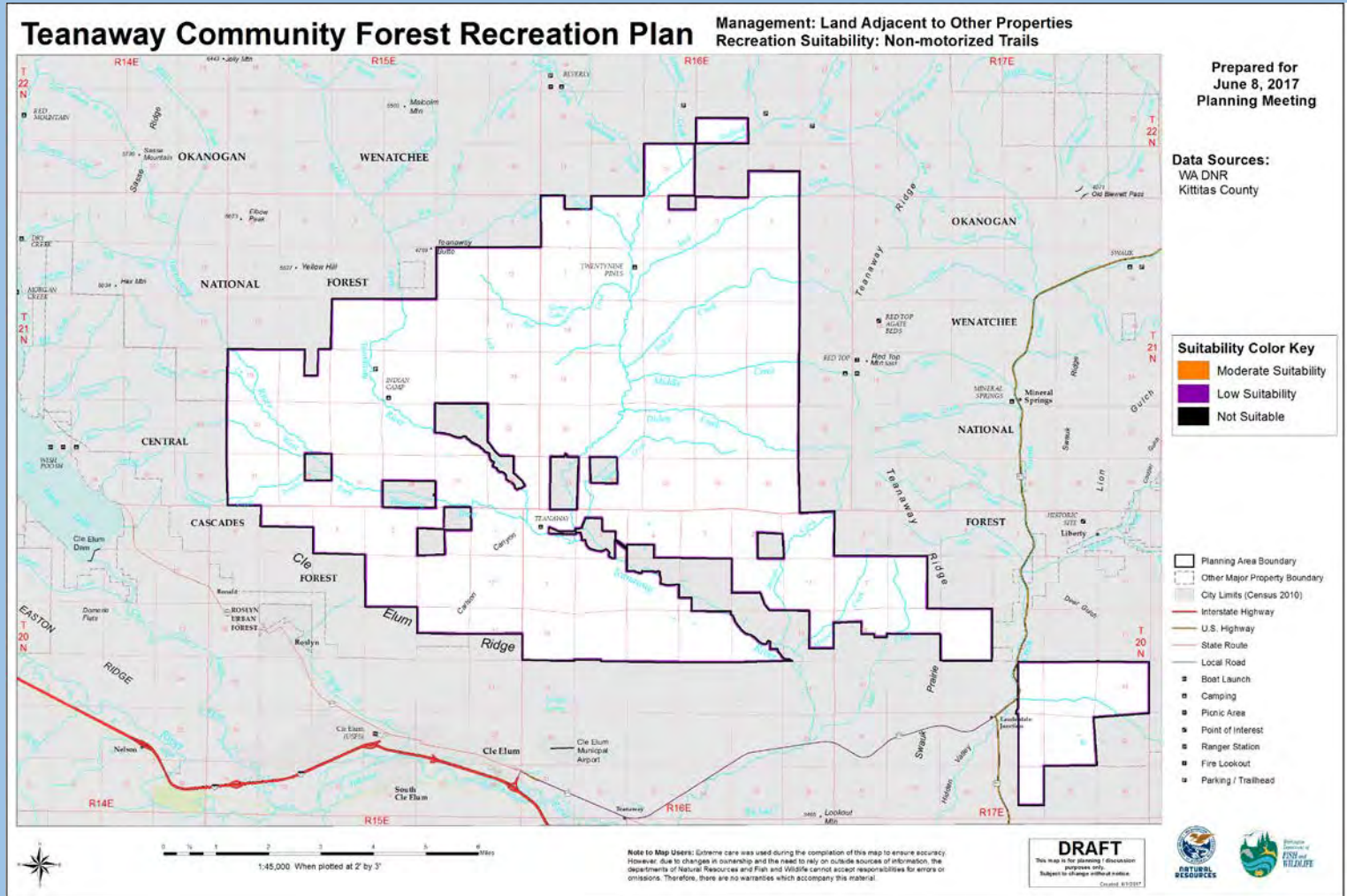
# TEANAWAY COMMUNITY FOREST RECREATION PLAN

## *Land Adjacent to Other Properties*



# TEANAWAY COMMUNITY FOREST RECREATION PLAN

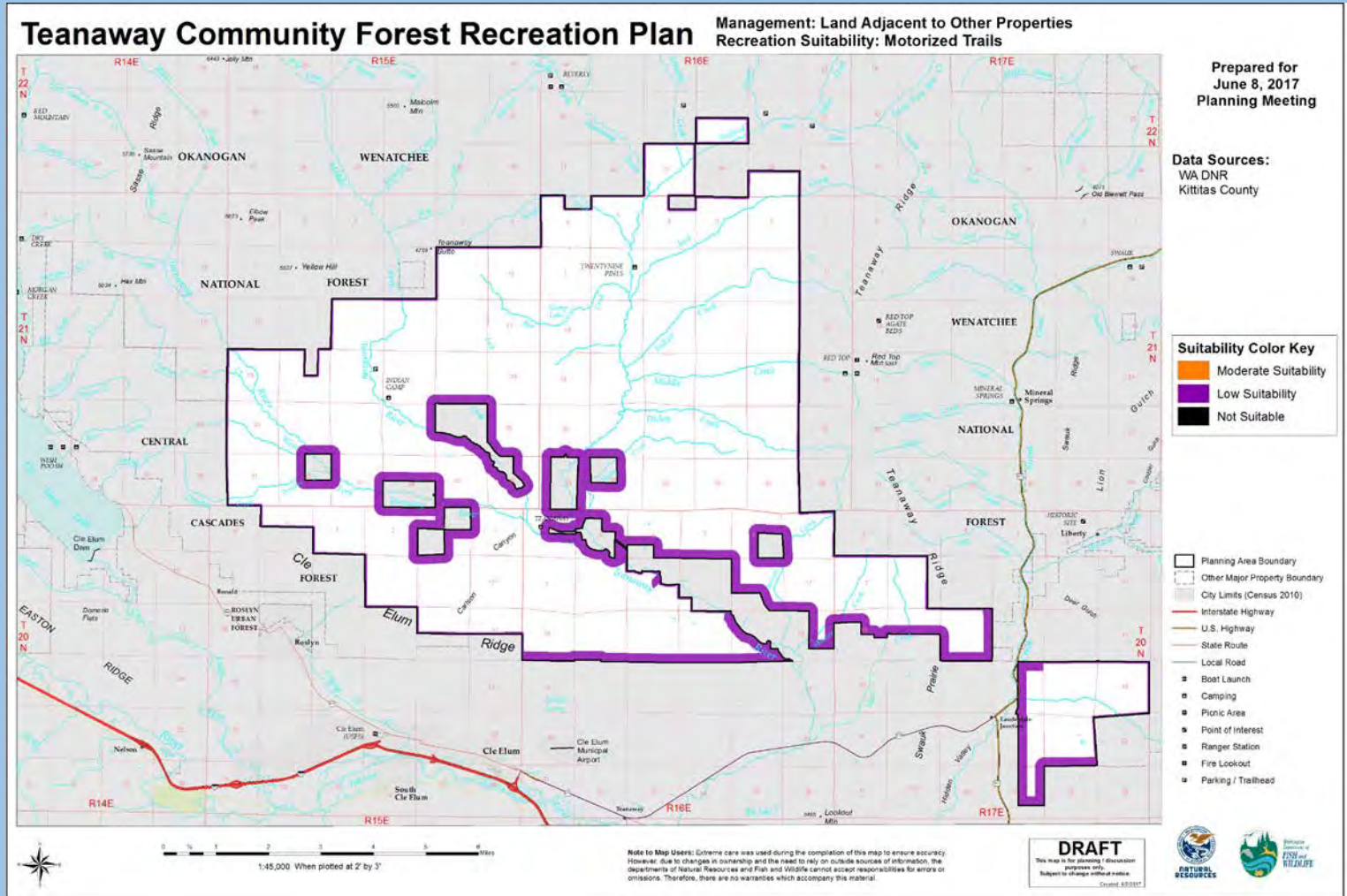
Land Adjacent  
to Other  
Properties:  
Non-  
motorized  
Trails





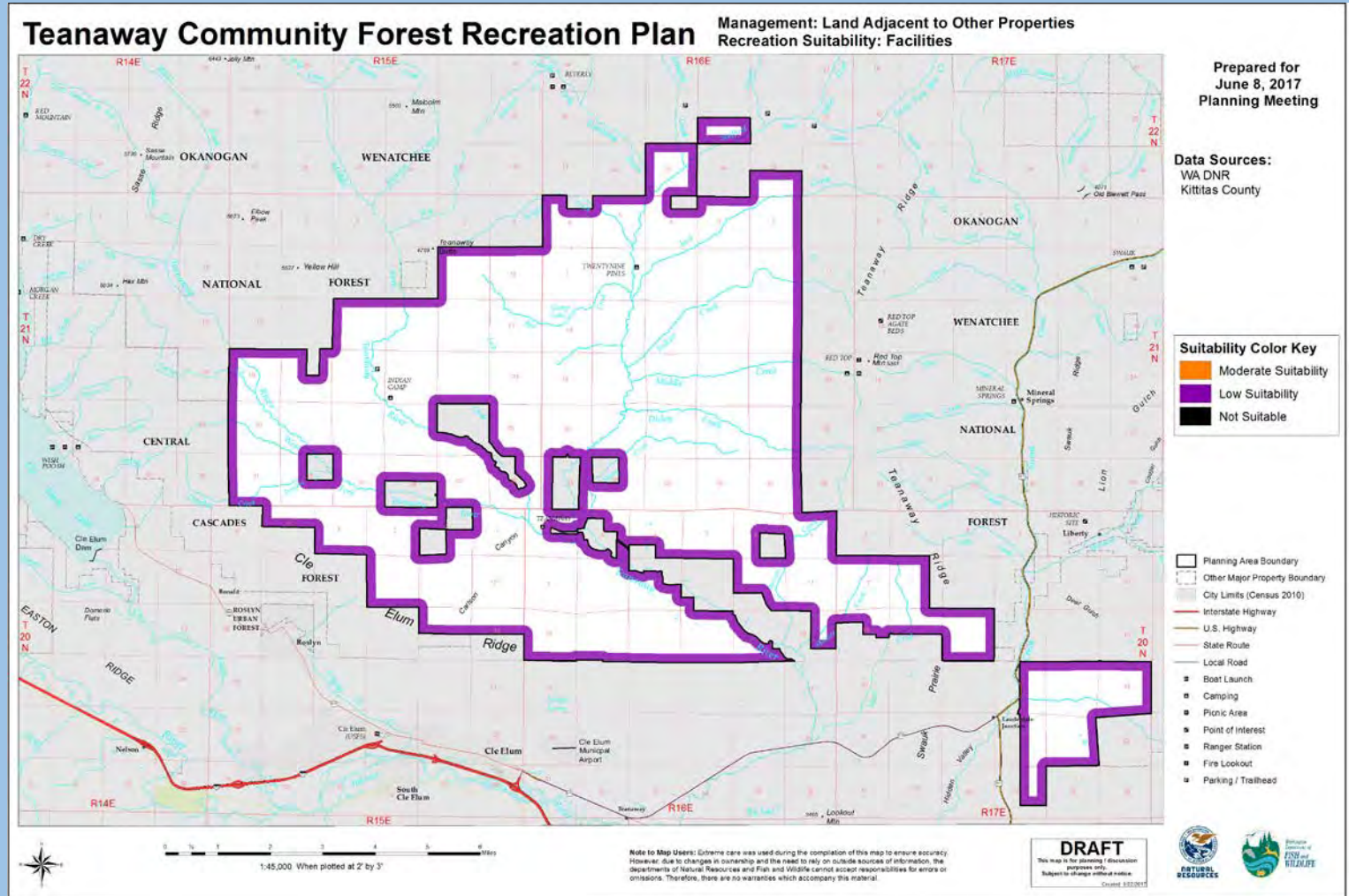
# TEANAWAY COMMUNITY FOREST RECREATION PLAN

Land Adjacent  
to Other  
Properties:  
Motorized  
Trails



# TEANAWAY COMMUNITY FOREST RECREATION PLAN

Land Adjacent  
to Other  
Properties:  
Facilities



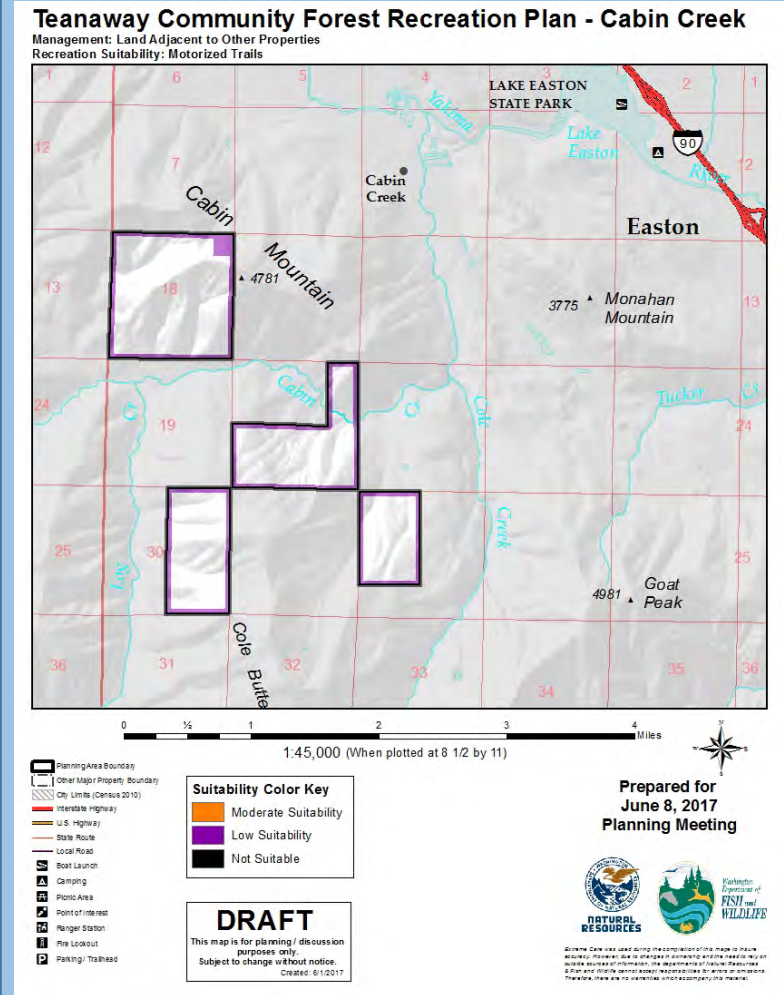
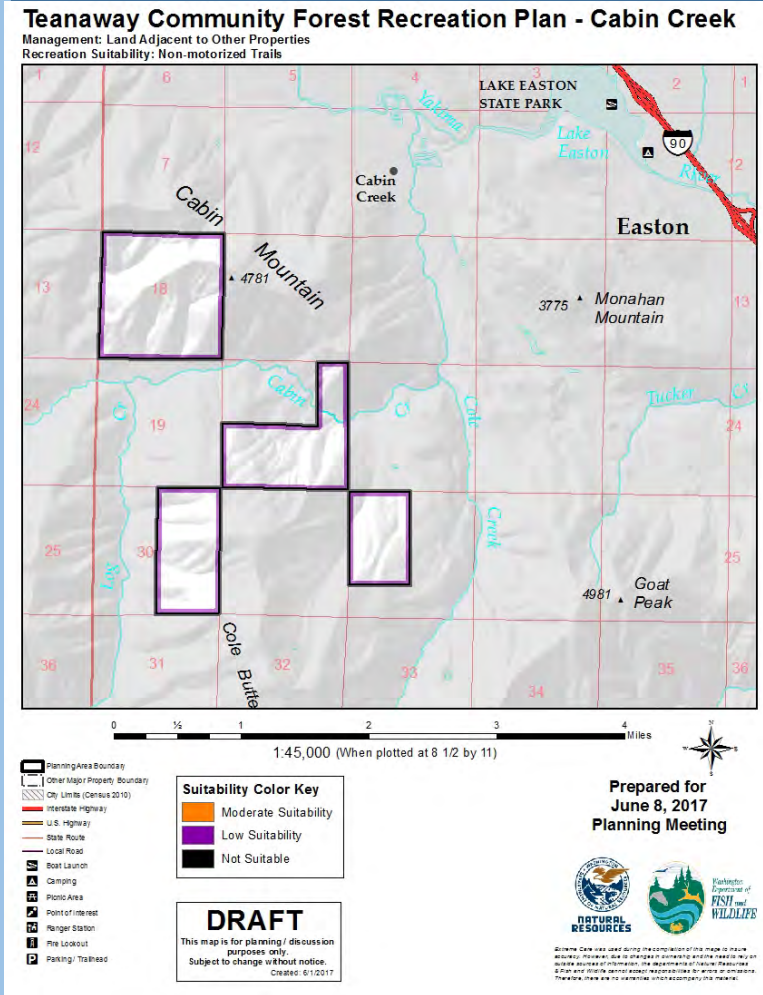


# TEANAWAY COMMUNITY FOREST RECREATION PLAN

Land Adjacent  
to Other  
Properties:  
Cabin Creek

## Non-motorized Trails

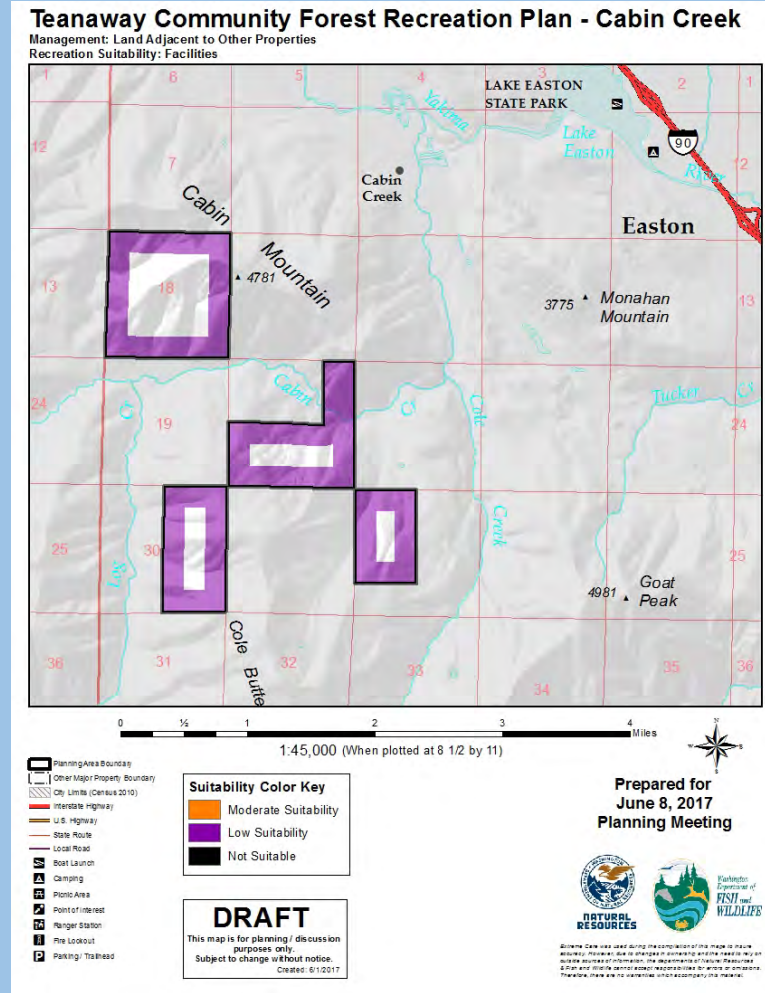
## Motorized Trails



# TEANAWAY COMMUNITY FOREST RECREATION PLAN

## Facilities

Land Adjacent  
to Other  
Properties:  
Cabin Creek





# TEANAWAY COMMUNITY FOREST RECREATION PLAN

## *Wells and Water Sources*



# TEANAWAY COMMUNITY FOREST RECREATION PLAN

## *Riparian Restoration Areas*

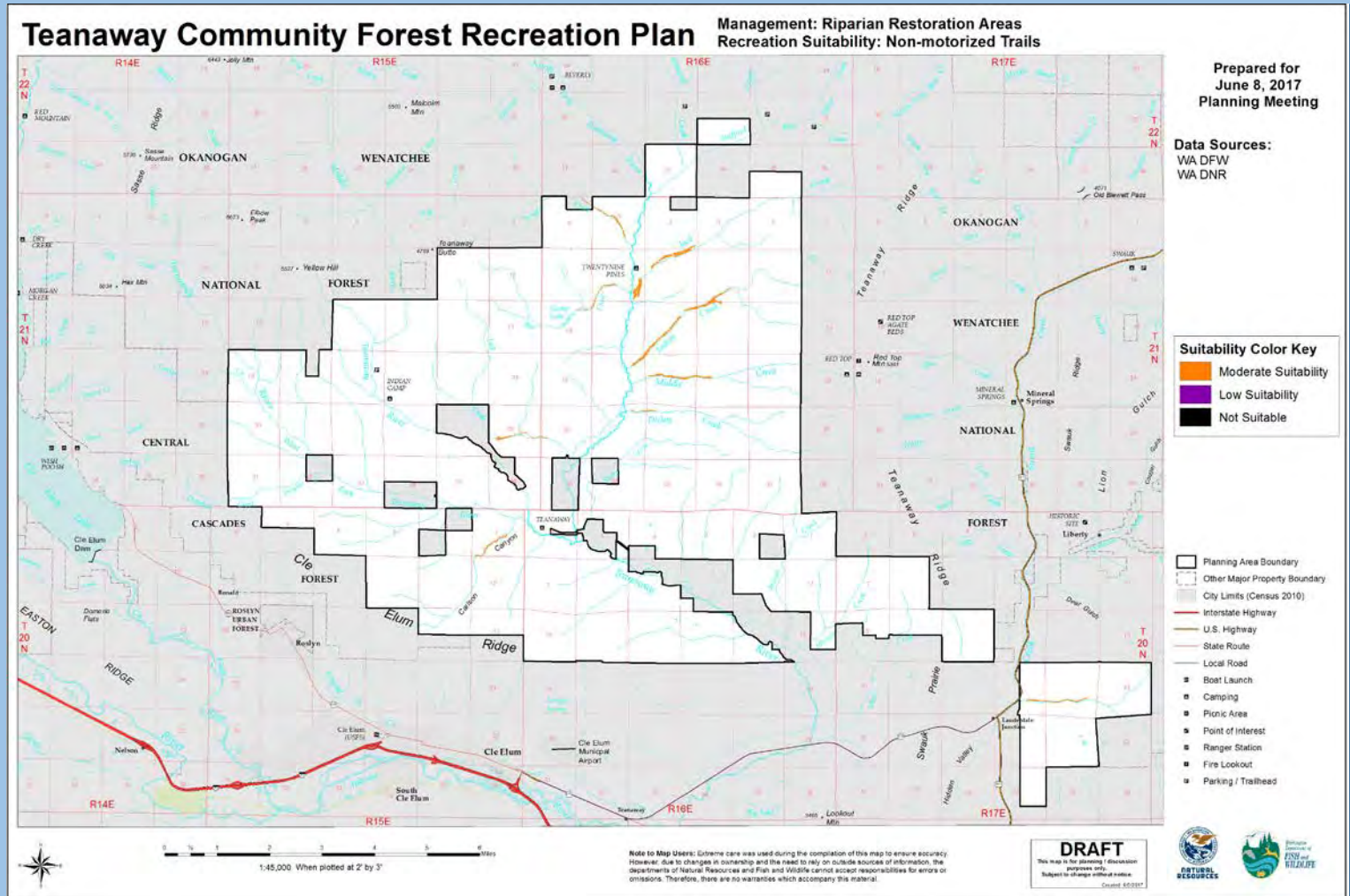




# TEANAWAY COMMUNITY FOREST RECREATION PLAN

Riparian  
Restoration  
Areas:

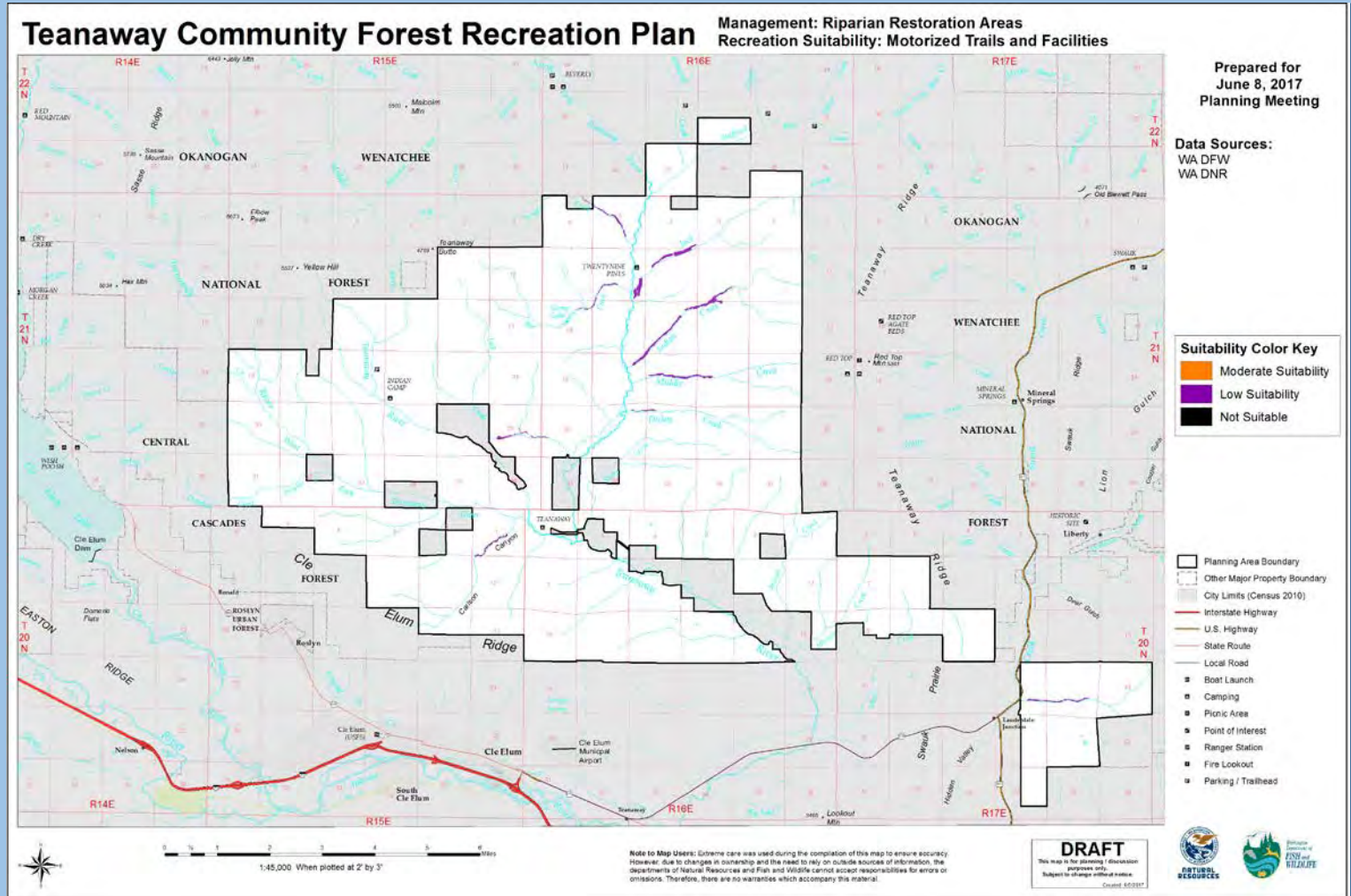
Non-  
motorized  
Trails



# TEANAWAY COMMUNITY FOREST RECREATION PLAN

Riparian  
Restoration  
Areas:

Motorized  
Trails and  
Facilities





# TEANAWAY COMMUNITY FOREST RECREATION PLAN

## *Cultural and Archeological Resources*



# TEANAWAY COMMUNITY FOREST RECREATION PLAN

## Teanaway Recreation Plan - Management Suitability Matrix

### MANAGEMENT CRITERIA - LONG TERM CONSIDERATIONS

	Non-Motorized Trails	Motorized Trails	Facilities
<b>Communication and Management Sites</b>	Low Suitability within 300' Communication Sites Low Suitability within 200' Management Sites	Low Suitability within 300' Communication Sites Low Suitability within 200' Management Sites	Low Suitability within 1000' Communication Sites Low Suitability within 200' Management Sites
<b>Rock Sources (existing and future)</b>	Not Suitable on site and within clearing limits Low Suitability within 500'	Not Suitable on site and within clearing limits Low Suitability within 500'	Not Suitable on or within clearing limits Low Suitability within 1000' if blasting occurs, management access, etc.
<b>Utility Easements</b>	Low Suitability within Utility leased areas	Low Suitability within Utility leased areas	Low Suitability within Utility leased areas
<b>Land Adjacent to Other Properties</b>	Low Suitability 200'	Low Suitability - 200' Forest Land Low Suitability - 900' Residential	Low Suitability 900'
<b>Wells and Water Sources</b>	Consult with Municipality	Consult with Municipality	Consult with Municipality
<b>Riparian Restoration Areas</b>	Moderate Suitability	Low Suitability	Low Suitability
<b>Cultural and Archeological Resources</b>	Low Suitability	Low Suitability	Low Suitability

#### Definitions

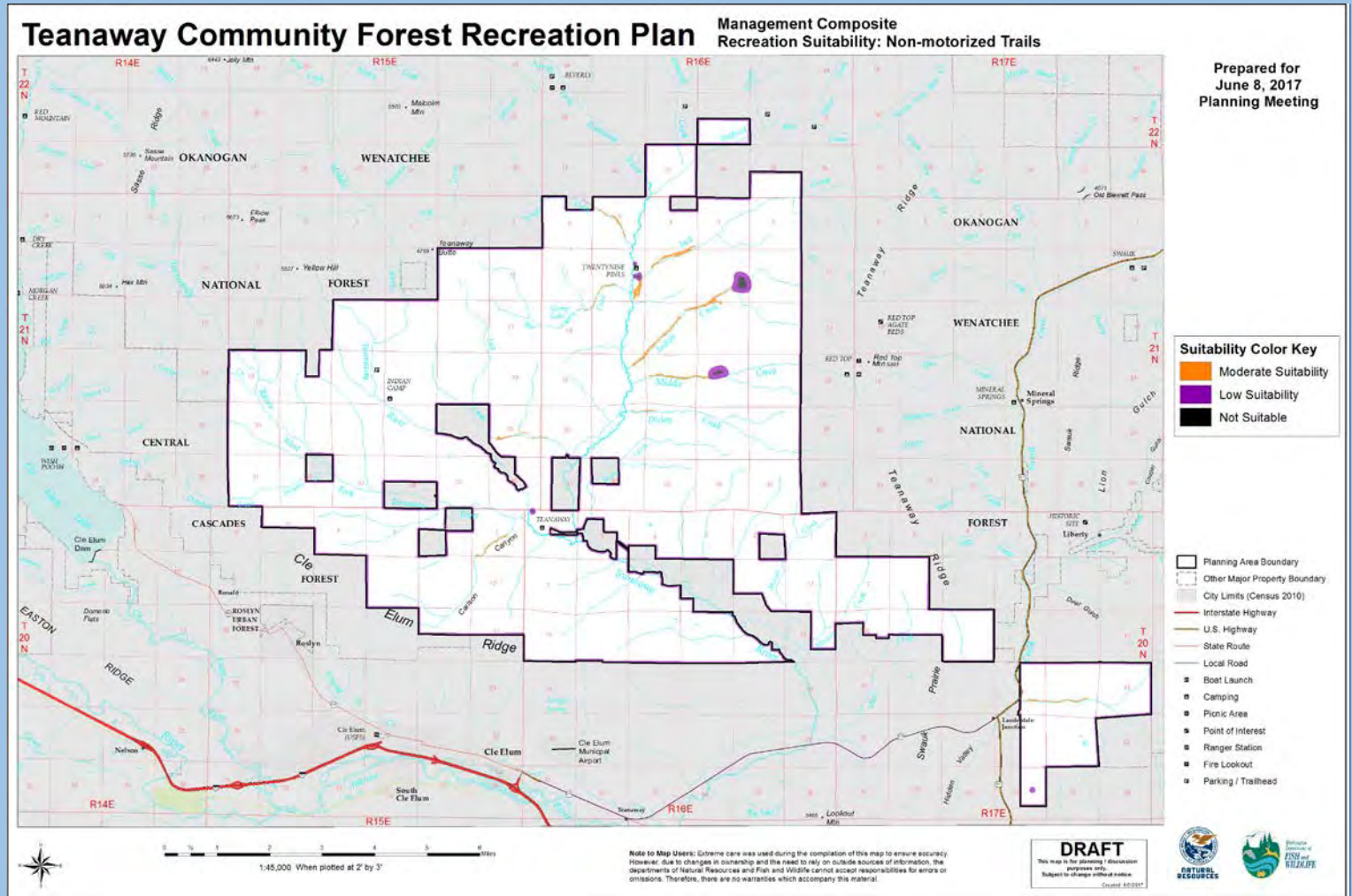
**Low Suitability**= Areas with long-term limiting factors. These primarily include social/political concerns and areas with leases/easements

**Moderate Suitability**= Areas where less mitigation and potential for concern exists compared to low suitability



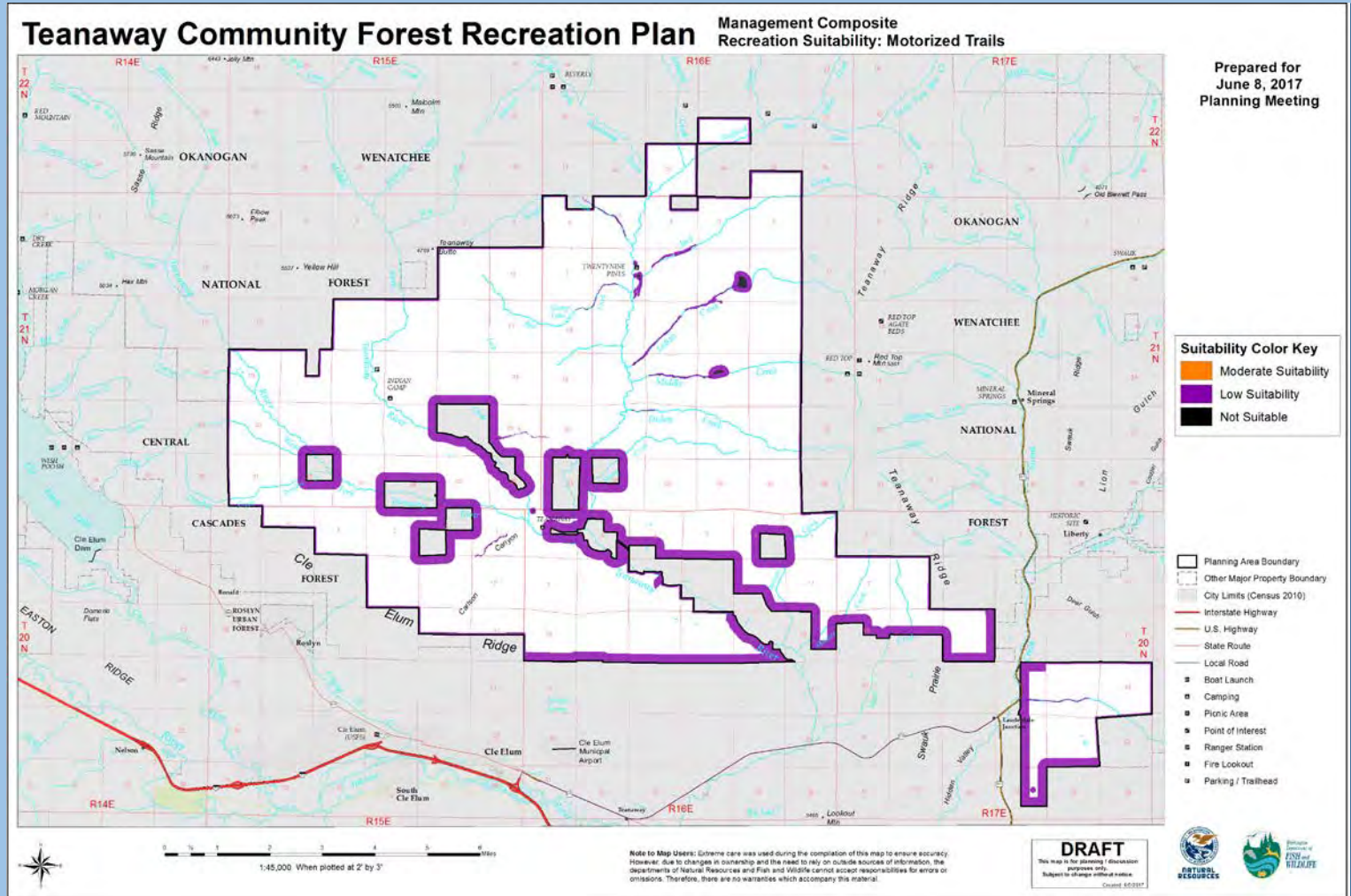
# TEANAWAY COMMUNITY FOREST RECREATION PLAN

Management  
Composite  
Recreation  
Suitability:  
Non-  
motorized  
Trails



# TEANAWAY COMMUNITY FOREST RECREATION PLAN

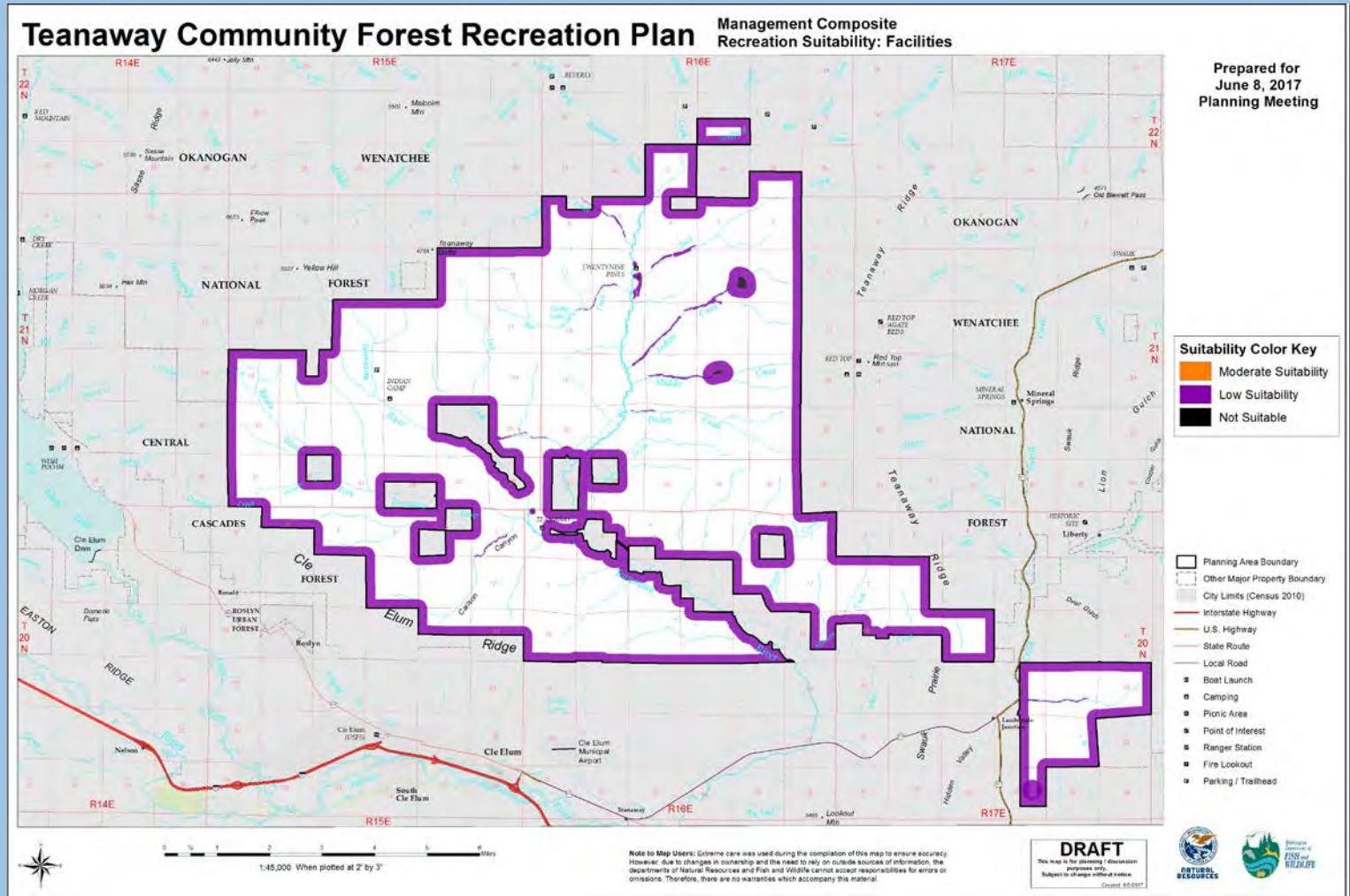
Management  
Composite  
Recreation  
Suitability:  
Motorized  
Trails





# TEANAWAY COMMUNITY FOREST RECREATION PLAN

Management  
Composite  
Recreation  
Suitability:  
Facilities

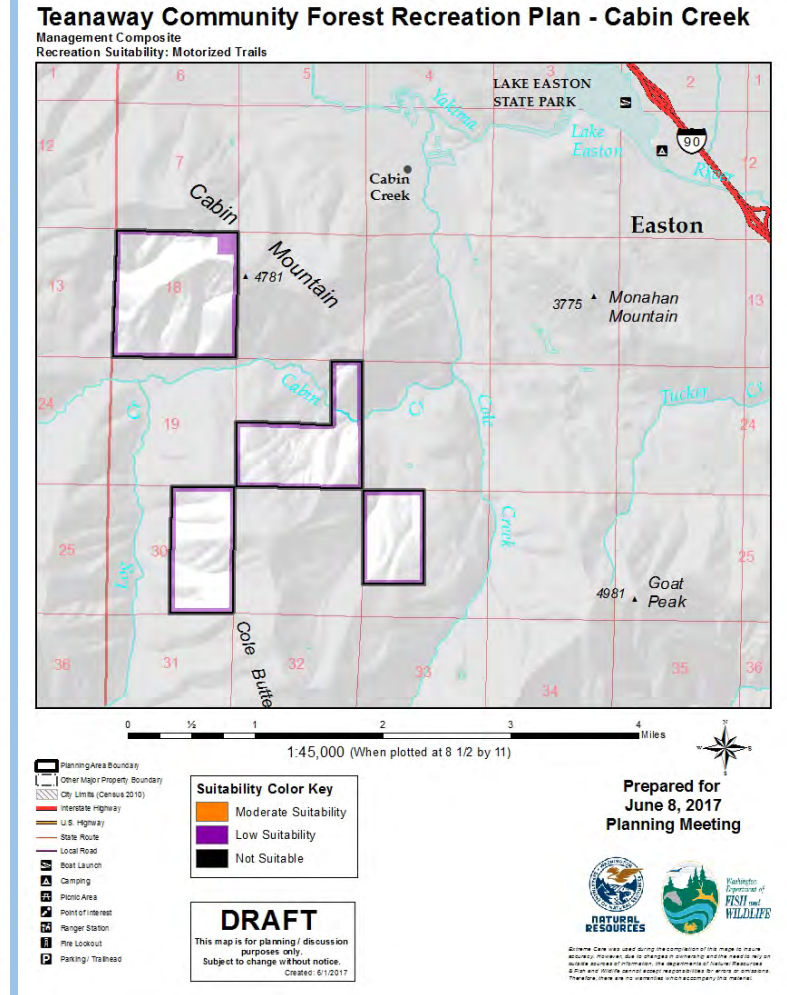
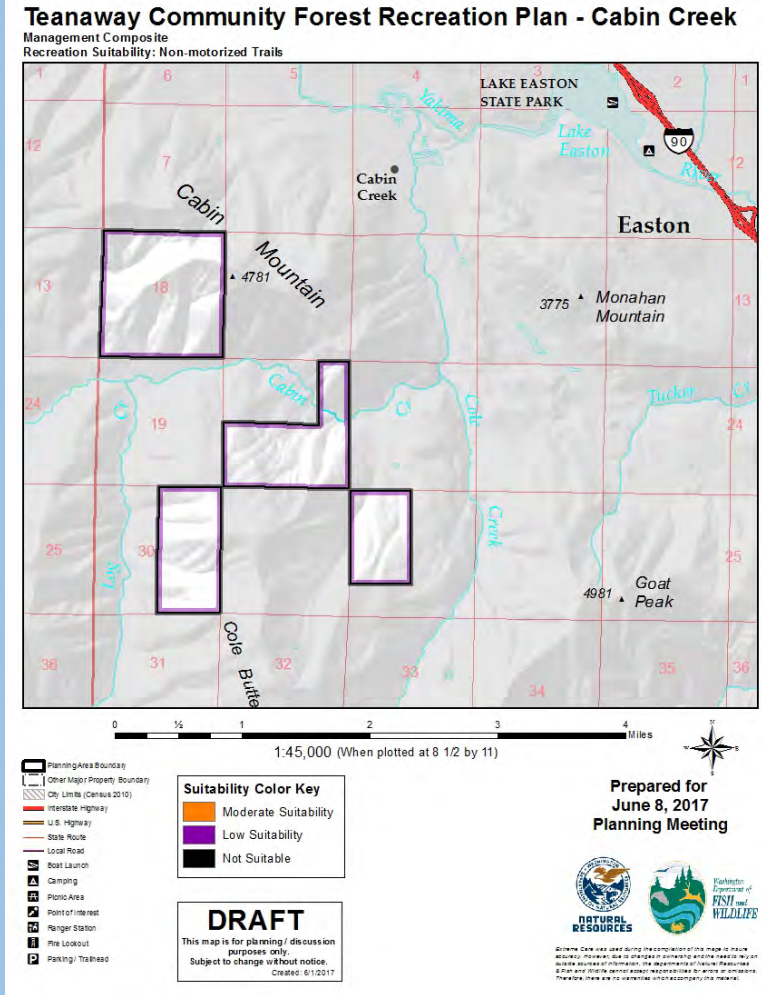


# TEANAWAY COMMUNITY FOREST RECREATION PLAN

Management  
Composite  
Recreation  
Suitability:  
Cabin Creek

## Non-motorized Trails

## Motorized Trails

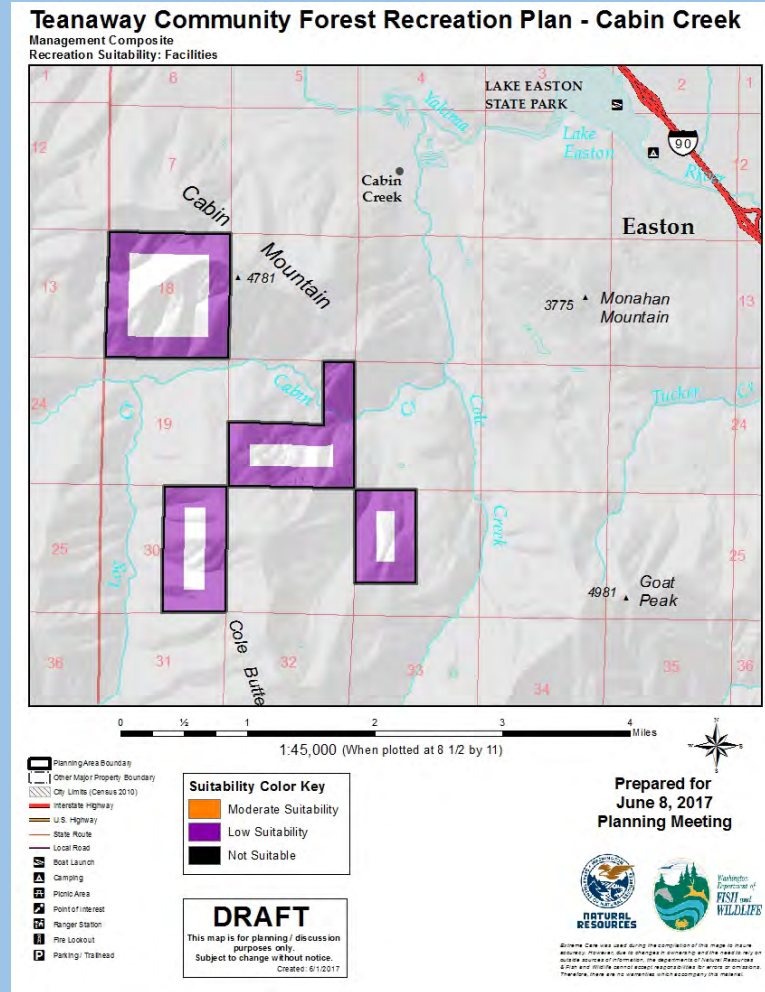




# TEANAWAY COMMUNITY FOREST RECREATION PLAN

## Facilities

Management  
Composite  
Recreation  
Suitability:  
Cabin Creek



# TEANAWAY COMMUNITY FOREST RECREATION PLAN

## Questions

